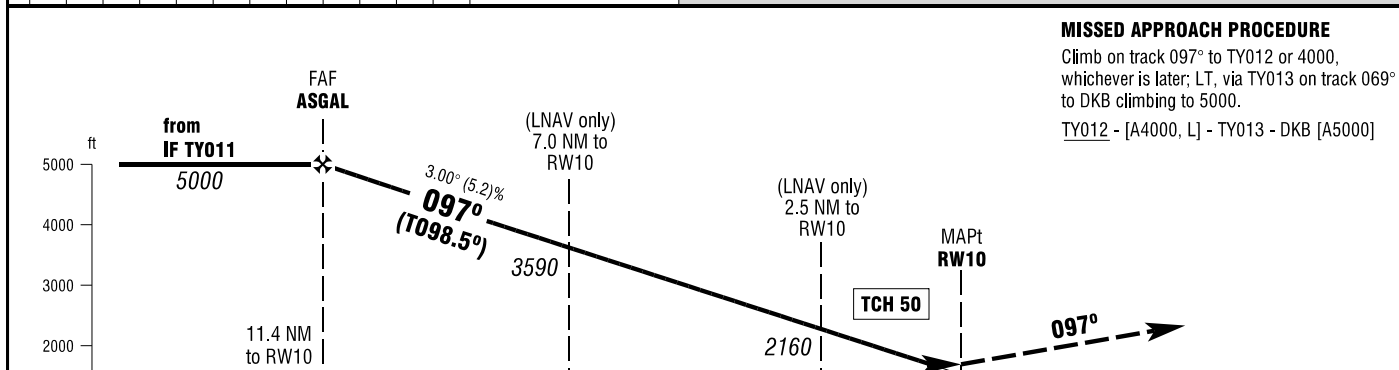
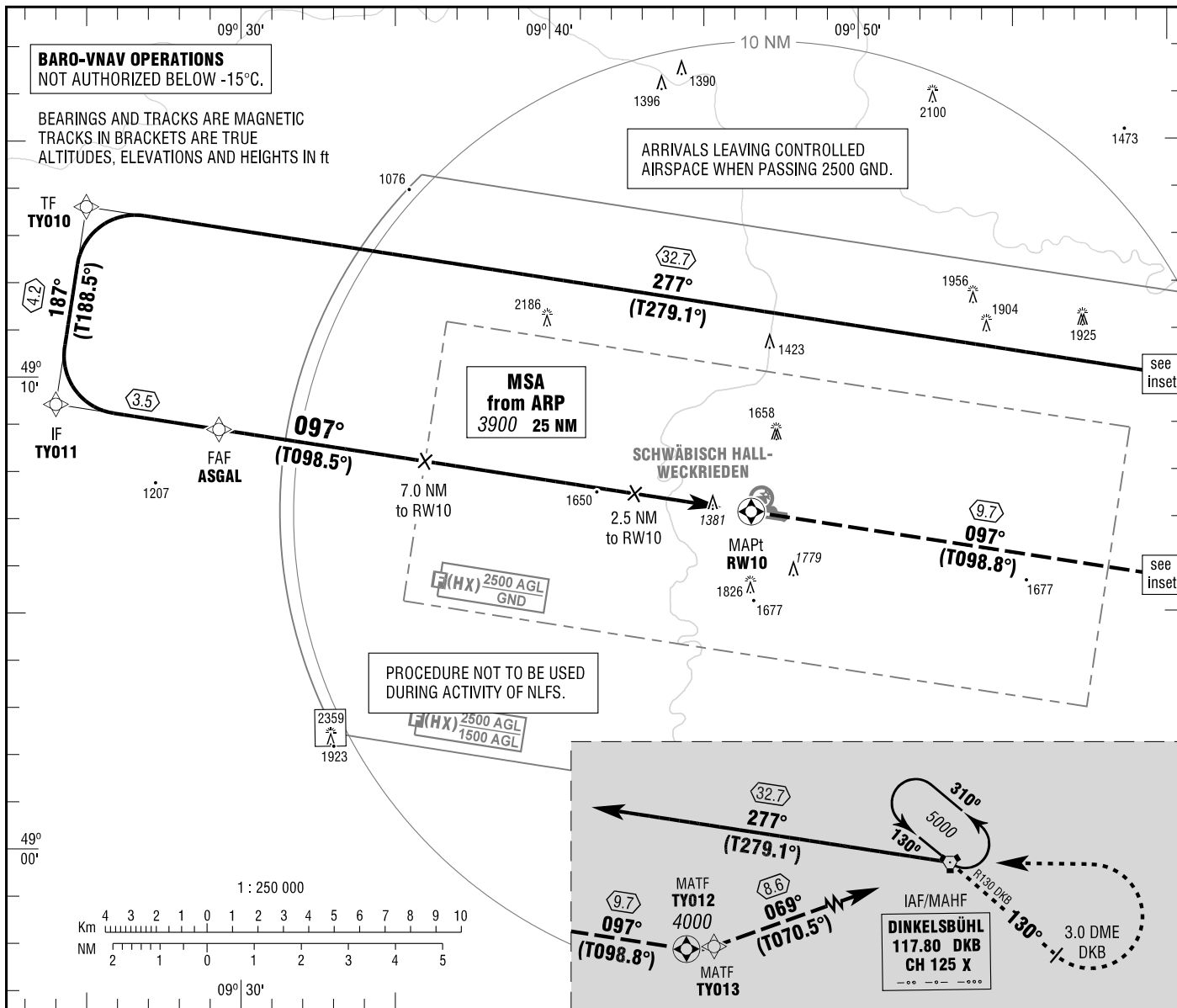


SCHWÄBISCH HALL  
RNAV (GPS) RWY 10  
EGNOS CH 82829 E10A

ATIS 133.875  
LANGEN RADAR 125.050  
INFO 129.225

ELEV 1311  
OCH RELATED TO VAR 2° E  
THR 10 ELEV 1311

INSTRUMENT  
APPROACH  
CHART - ICAO



**MISSED APPROACH PROCEDURE**  
Climb on track 097° to TY012 or 4000, whichever is later; LT, via TY013 on track 069° to DKB climbing to 5000.  
TY012 - [A4000, L] - TY013 - DKB [A5000]

OCA (OCH)	A	B	C
LNAV	1760 (450)	1780 (470)	1830 (520)
LNAV / VNAV	1630 (320)	1630 (320)	1630 (320)
LPV	1760 (450)	1780 (470)	1830 (520)

DIST THR / RW10	11	10	9	8	7	6	5	4	3	2
ALTITUDE	4870	4550	4230	3910	3590	3280	2960	2640	2320	2000

Timing not authorized for defining the MAPt.

GS	kt	80	100	120	140
ASGAL - RW10 (11.4 NM)	MIN:SEC	8:33	6:50	5:42	4:53
Rate of descent (5.2%)	ft / MIN	420	530	640	740

Correction: LPV established, SHD DME withdrawn, OCA(H) values, radials.