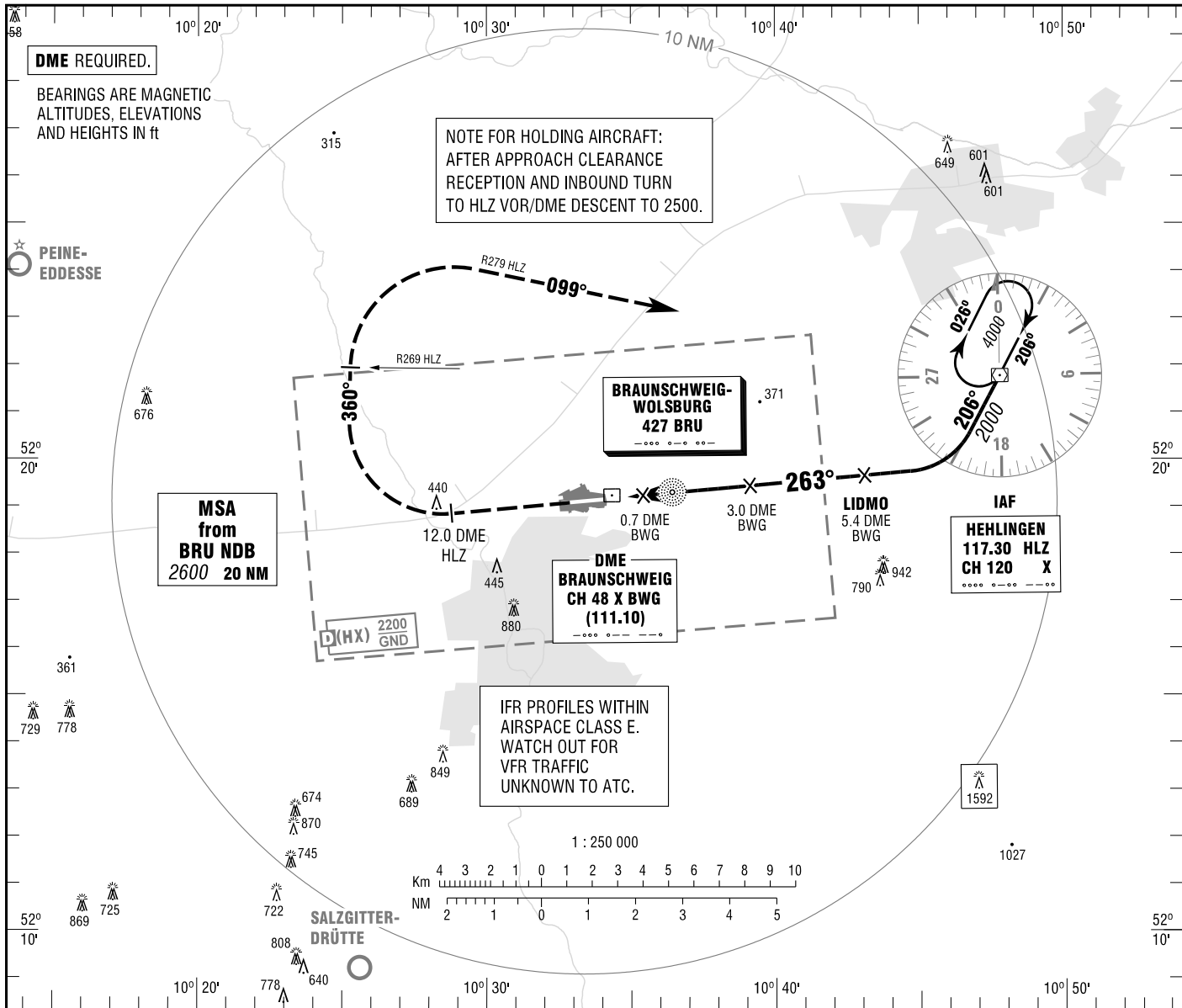


**BRAUNSCHWEIG-WOLFSBURG**  
NDB  
RWY 26

BREMEN RADAR 131.325  
BRAUNSCHWEIG TOWER 120.050  
369.025

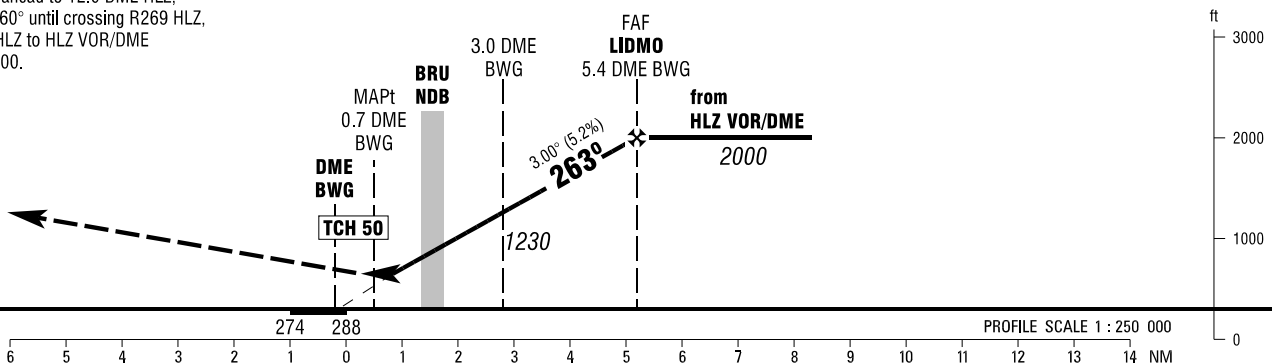
ELEV 295  
OCH RELATED TO VAR 2° E  
THR 26 ELEV 288

**INSTRUMENT**  
**APPROACH**  
**CHART - ICAO**



**MISSED APPROACH PROCEDURE**

Climb straight ahead to 12.0 DME HLZ,  
RT, on track 360° until crossing R269 HLZ,  
RT, on R279 HLZ to HLZ VOR/DME  
climbing to 4000.



| OCA (OCH)  | A            | B            | C             | D             |
|------------|--------------|--------------|---------------|---------------|
| NDB-DME    | 670<br>(390) | 670<br>(390) | 670<br>(390)  | 670<br>(390)  |
| CIRCLING * | 740<br>(450) | 900<br>(610) | 1000<br>(710) | 1000<br>(710) |

| DME BWG  | 2   | 3    | 4    | 5    |
|----------|-----|------|------|------|
| DIST THR | 1.8 | 2.8  | 3.8  | 4.8  |
| ALTITUDE | 920 | 1230 | 1550 | 1870 |

Timing not authorized for defining the MAPt.

| GS                          | kt       | 80   | 100  | 120  | 140  | 160  | 180  |
|-----------------------------|----------|------|------|------|------|------|------|
| 3.0 DME BWG - MAPt (2.3 NM) | MIN:SEC  | 1:44 | 1:23 | 1:09 | 0:59 | 0:52 | 0:46 |
| Rate of descent (5.2%)      | ft / MIN | 420  | 530  | 640  | 740  | 850  | 960  |

\* NORTH OF AERODROME ONLY.

Correction: Note added.