

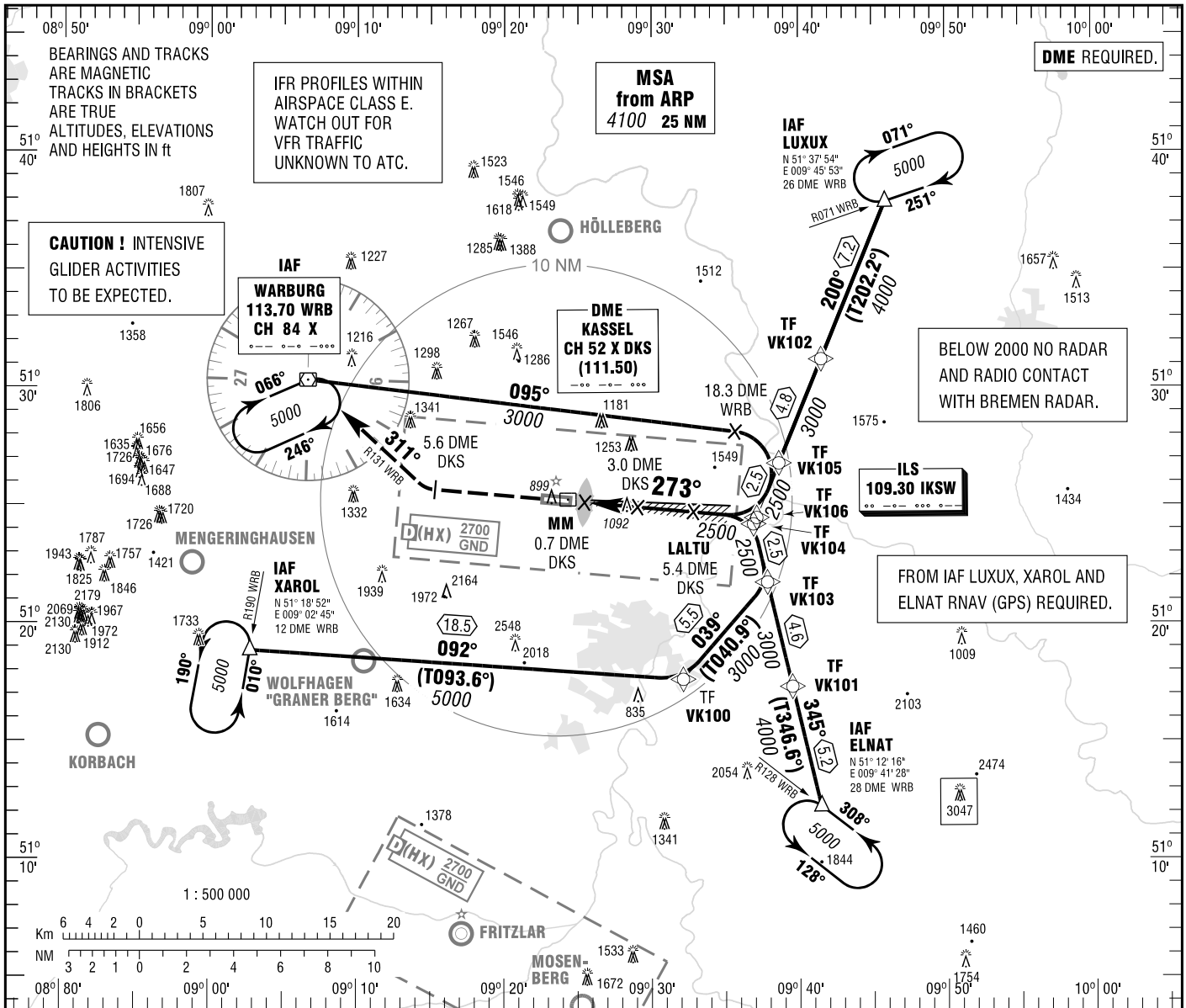
**INSTRUMENT
APPROACH
CHART - ICAO**

VAR 2° E

ELEV 861
OCH RELATED TO
THR 27 ELEV 803

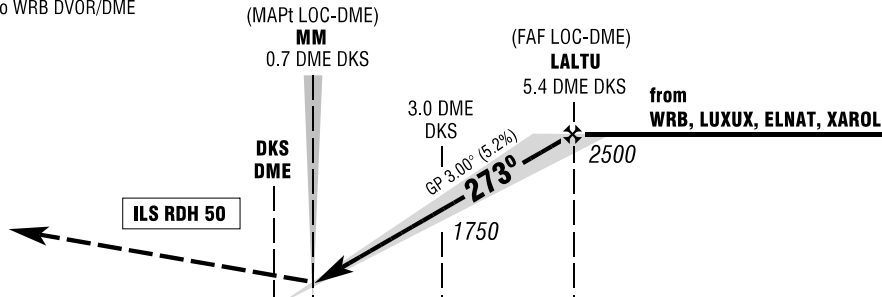
KASSEL ATIS 129.200
BREMEN RADAR 126.650
KASSEL TOWER 118.100
KASSEL GROUND 121.900

**KASSEL-CALDEN
ILS CAT II & III or LOC
RWY 27**



MISSED APPROACH PROCEDURE

Climb straight ahead to 5.6 DME DKS;
RT, on R131 WRB to WRB DVOR/DME
climbing to 5000.



PROFILE SCALE 1 : 250 000
NM 6 5 4 3 2 1 0 1 2 3 4 5 6 7 8 9 10 11 12 13 14 NM

OCA (OCH)	A	B	C	D
ILS-DME CAT I	961 (158)	970 (167)	980 (177)	990 (187)
ILS-DME CAT II	872 (69)	888 (85)	902 (99)	915 (112)
LOC-DME	1340 (540)	1340 (540)	1340 (540)	1340 (540)

DME DKS	2	3	4	5
DIST THR	1.8	2.8	3.8	4.8
ALTITUDE	1430	1750	2070	2390

LOC-DME: Timing not authorized for defining the MAPt.

GS	kt	80	100	120	140	160	180
3.0 DME DKS - THR (2.8 NM)	MIN:SEC	2:06	1:41	1:24	1:12	1:03	0:56
Rate of descent (5.2%)	ft / MIN	420	530	640	740	850	960

CAT IIIA AND CAT IIIB (MNM RVR 75m) APPROVED; ILS CAT III NOT AVAILABLE FOR D ACFT.

Correction: Communications, OCA(H) values & obstacles revised, profile note modified.