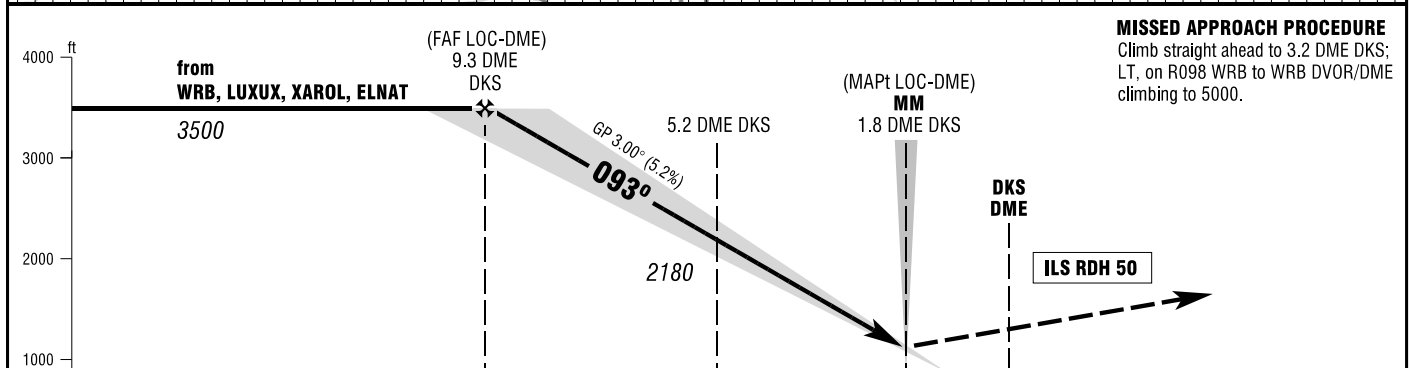
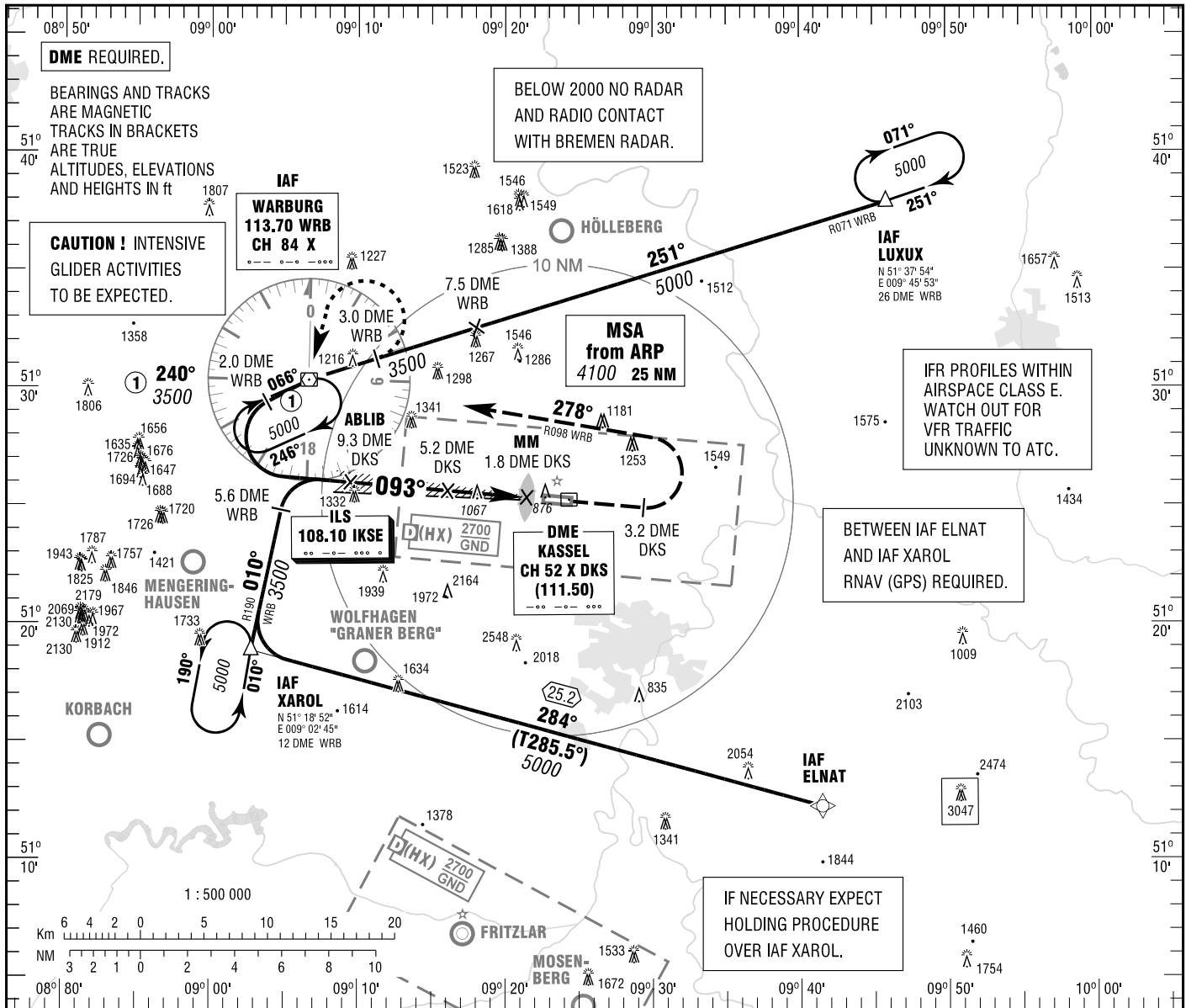


KASSEL-CALDEN
ILS or LOC
RWY 09

KASSEL ATIS 129.200 KASSEL TOWER 118.100
BREMEN RADAR 126.650 KASSEL GROUND 121.900

ELEV 861
OCH RELATED TO THR 09 ELEV 861
VAR 2° E

**INSTRUMENT
APPROACH
CHART - ICAO**



PROFILE SCALE 1 : 250 000

OCA (OCH)	A	B	C	D
ILS-DME CAT I	1008 (147)	1018 (157)	1028 (167)	1037 (176)
LOC-DME	1320 (460)	1320 (460)	1320 (460)	1320 (460)

DME DKS	9	8	7	6	5	4	3
DIST THR	7.8	6.8	5.8	4.8	3.8	2.8	1.8
ALTITUDE	3400	3080	2760	2440	2130	1810	1490

LOC-DME: Timing not authorized for defining the MAPt.

GS	kt	80	100	120	140	160	180
5.2 DME DKS - THR (4.0 NM)	MIN:SEC	3:00	2:24	2:00	1:43	1:30	1:20
Rate of descent (5.2%)	ft / MIN	420	530	640	740	850	960

Correction: Communications, OCA(H) values & obstacles revised, ILS CAT II, III & IIb withdrawn, depiction.