

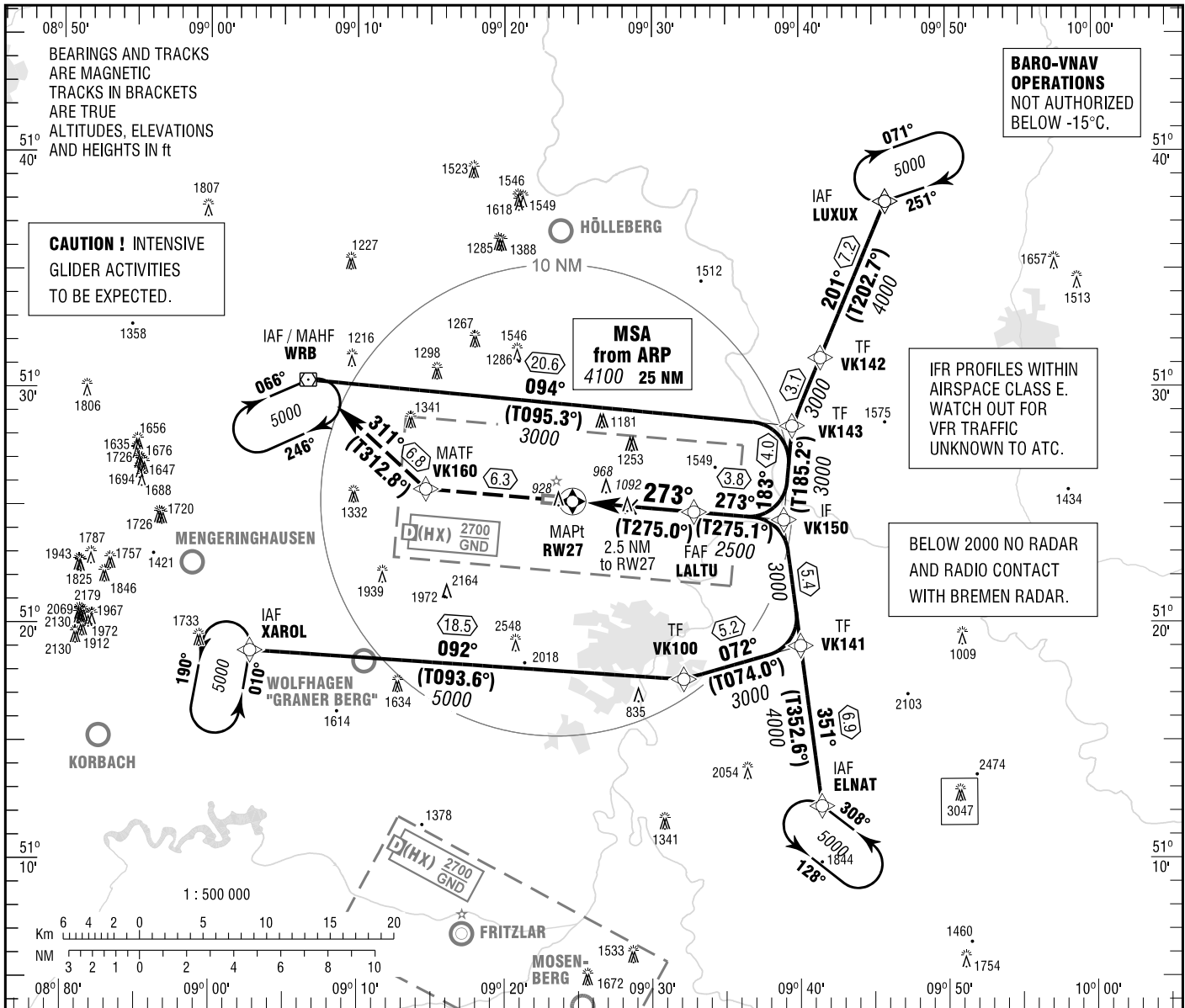
**INSTRUMENT  
APPROACH  
CHART - ICAO**

VAR 2° E

ELEV 861  
OCH RELATED TO  
THR 27 ELEV 803

KASSEL ATIS 129.200  
BREMEN RADAR 126.650  
KASSEL TOWER 118.100  
KASSEL GROUND 121.900

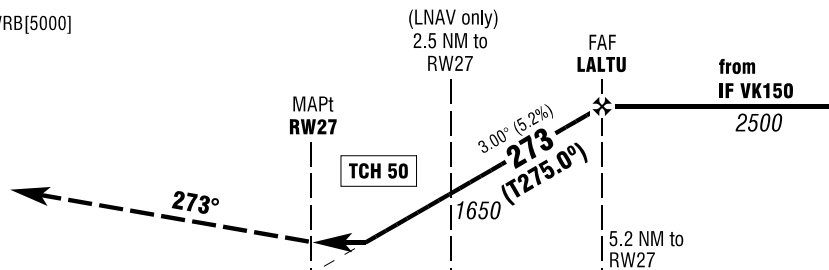
**KASSEL-CALDEN  
RNAV (GPS) RWY 27  
EGNOS CH 97071 E27A**



**MISSED APPROACH PROCEDURE**

Climb on track 273° to VK160, RT,  
on track 311° to WRB climbing to 5000.

VK160 [R] - WRB[5000]



NM 6 5 4 3 2 1 0 1 2 3 4 5 6 7 8 9 10 11 12 13 14 NM

OCA (OCH)	A	B	C	D
LNAV	1340 (540)	1340 (540)	1340 (540)	1340 (540)
LNAV / VNAV	1210 (400)	1210 (400)	1210 (400)	1210 (400)
LPV	1103 (300)	1103 (300)	1103 (300)	1103 (300)

DIST THR / RW27	2	3	4	5
ALTITUDE	1500	1810	2130	2450

Timing not authorized for defining the MAPt.

GS	kt	80	100	120	140	160	180
LALTU - RW27 (5.2 NM)	MIN:SEC	3:54	3:07	2:36	2:14	1:57	1:44
Rate of descent (5.2%)	ft / MIN	430	530	640	740	850	960

Correction: Communications, OCA(H) values & obstacles, depiction.