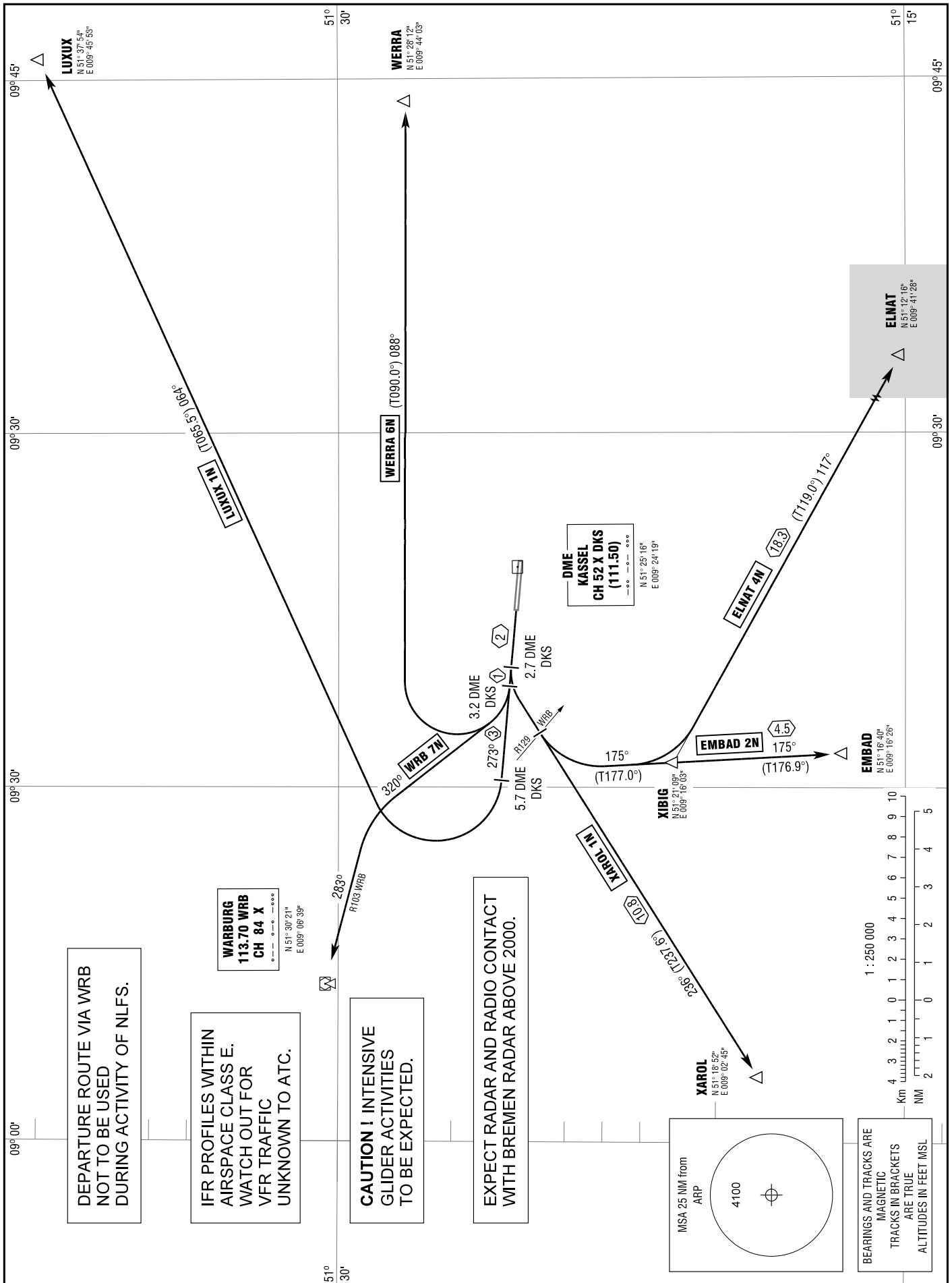


STANDARD DEPARTURE
CHART - INSTRUMENT
(SID)

TRANSITION
ALTITUDE 5000
VAR 2° E

KASSEL ATIS	129.200	KASSEL TOWER	118.100
KASSEL APRON	121.700	BREMEN RADAR	126.650
KASSEL GROUND	121.900		

KASSEL-CALDEN
RWY 27



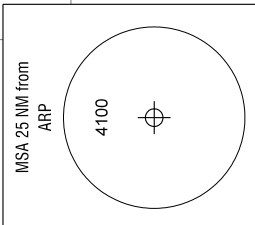
Correction: Minor.

DEPARTURE ROUTE VIA WRB
NOT TO BE USED
DURING ACTIVITY OF NLFS.

IFR PROFILES WITHIN
AIRSPACE CLASS E.
WATCH OUT FOR
VFR TRAFFIC
UNKNOWN TO ATC.

CAUTION ! INTENSIVE
GLIDER ACTIVITIES
TO BE EXPECTED.

EXPECT RADAR AND RADIO CONTACT
WITH BREMEN RADAR ABOVE 2000.



BEARINGS AND TRACKS ARE
MAGNETIC
TRACKS IN BRACKETS
ARE TRUE
ALTITUDES IN FEET MSL