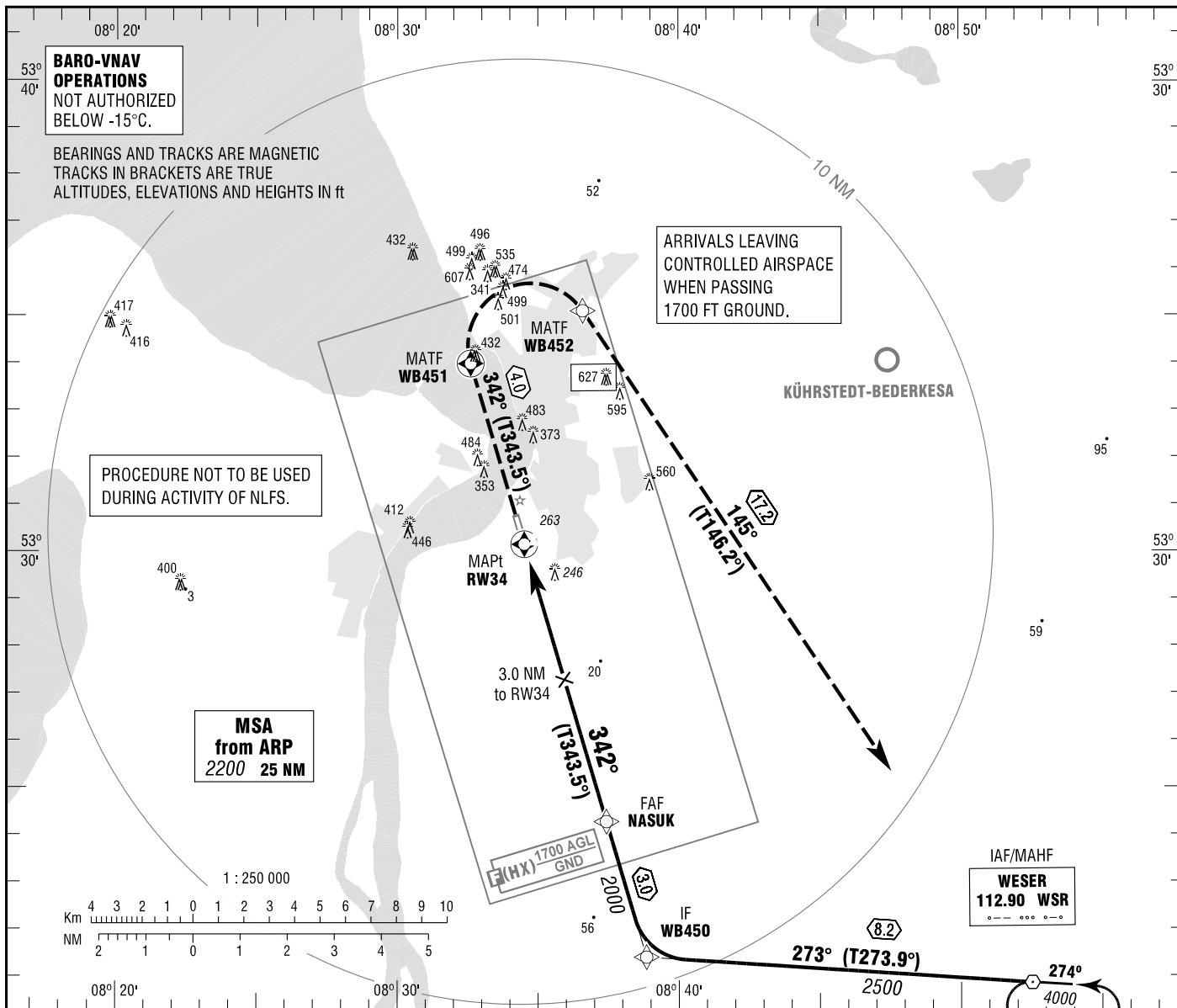


BREMERHAVEN
RNAV (GPS)
RWY 34

| | |
|------------------|---------|
| BREMEN RADAR | 124.075 |
| NORDHOLZ RADAR | 123.300 |
| BREMERHAVEN INFO | 129.050 |

ELEV 11
OCH RELATED TO VAR 1° E
THR 34 ELEV 10

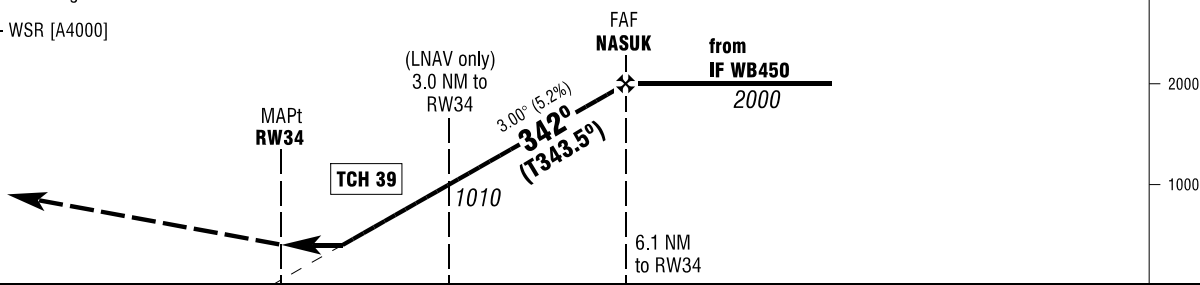
**INSTRUMENT
APPROACH
CHART - ICAO**



MISSED APPROACH PROCEDURE

Climb on track 342° to WB451; RT via WB452
on track 145° to WSR climbing 4000.

WB451 [R] - WB452 - WSR [A4000]



PROFILE SCALE 1 : 250 000

| | | | | |
|-------------|--------------|--------------|--------------|--|
| OCA (OCH) | A | B | C | |
| LNAV | 510 (500) | 510 (500) | 510 (500) | |
| LNAV / VNAV | 500 (490) | 500 (490) | 500 (490) | |
| | | | | |
| | | | | |

| | | | | | | | |
|-----------------|----------|----------|----------|----------|----------|--|--|
| DIST THR / RW34 | 2 | 3 | 4 | 5 | 6 | | |
| ALTITUDE | 690 | 1010 | 1330 | 1650 | 1960 | | |

Timing not authorized for defining the MAPt.

| | | | | | | |
|------------------------|----------|-----------|------------|------------|------------|------------|
| GS | kt | 80 | 100 | 120 | 140 | 160 |
| NASUK - RW34 (6.1 NM) | MIN:SEC | 4:35 | 3:40 | 3:03 | 2:37 | 2:17 |
| Rate of descent (5.2%) | ft / MIN | 420 | 530 | 640 | 740 | 850 |

Correction: Communications, obstacles revised, OCA(H) values & obstacles, missed approach.