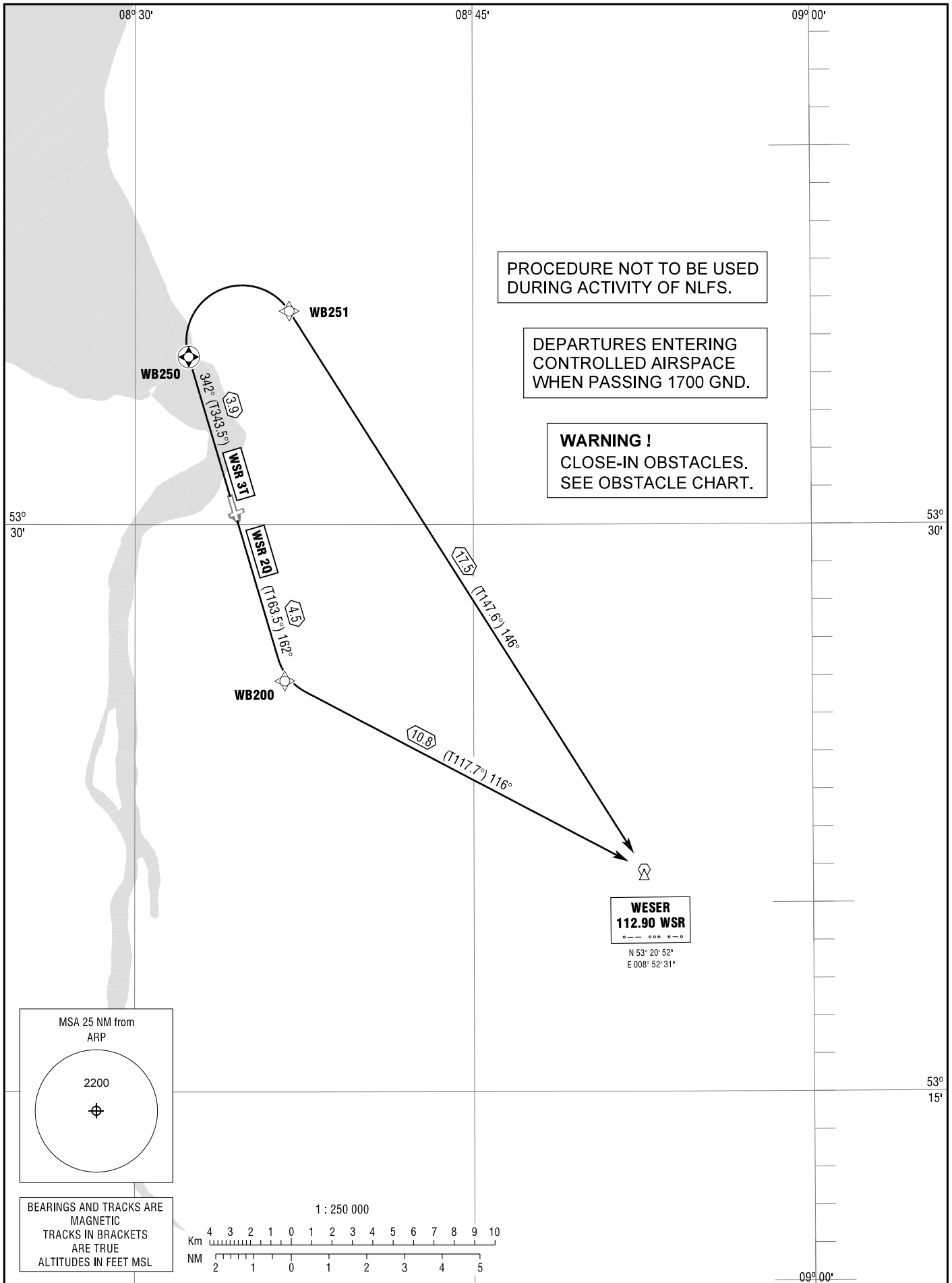


STANDARD DEPARTURE
CHART - INSTRUMENT
RNAV (GPS)

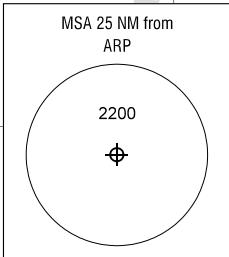
TRANSITION
ALTITUDE 5000
VAR 1° E

BREMEN RADAR	125.650
NORDHOLZ RADAR	124.075
BREMERHAVEN INFO	123.300
BREMERHAVEN INFO	129.050

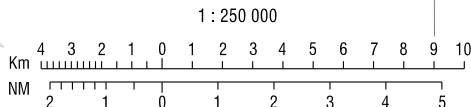
BREMERHAVEN
RWY 16/34



Correction: New chart.



BEARINGS AND TRACKS ARE
MAGNETIC
TRACKS IN BRACKETS
ARE TRUE
ALTITUDES IN FEET MSL



STANDARD DEPARTURE
ROUTES – INSTRUMENT
RNAV (GPS) – (SID)

BREMERHAVEN
RWY 16/34

Designator	Route	After Take-Off		Remarks
		Climb to	Contact	
1	2	3	4	5

RWY 16

WSR 2Q	WESER TWO QUEBEC On track 162° to WB200; LT, on track 116° to WSR (△). RNAV (GPS): [A500+] - WB200 [L] - WSR.	4000	Nordholz APP 123.300 Bremen Radar 125.650/124.075	Not to be used during activity of NLFS.
---------------	---	------	--	---

RWY 34

WSR 3T	WESER THREE TANGO On track 342° to WB250; RT, via WB251 on track 146° to WSR (△). Climb with 5.5% (334 ft/NM) or more until passing 300. RNAV (GPS): [A500+] - WB250 [R] - WB251 - WSR.	4000	Nordholz APP 123.300 Bremen Radar 125.650/124.075	1. Not to be used during activity of NLFS. 2. PDG 5.5% (334 ft/NM) due to obstacle.
---------------	--	------	--	--

(Sample: WB250 fly-over way point)