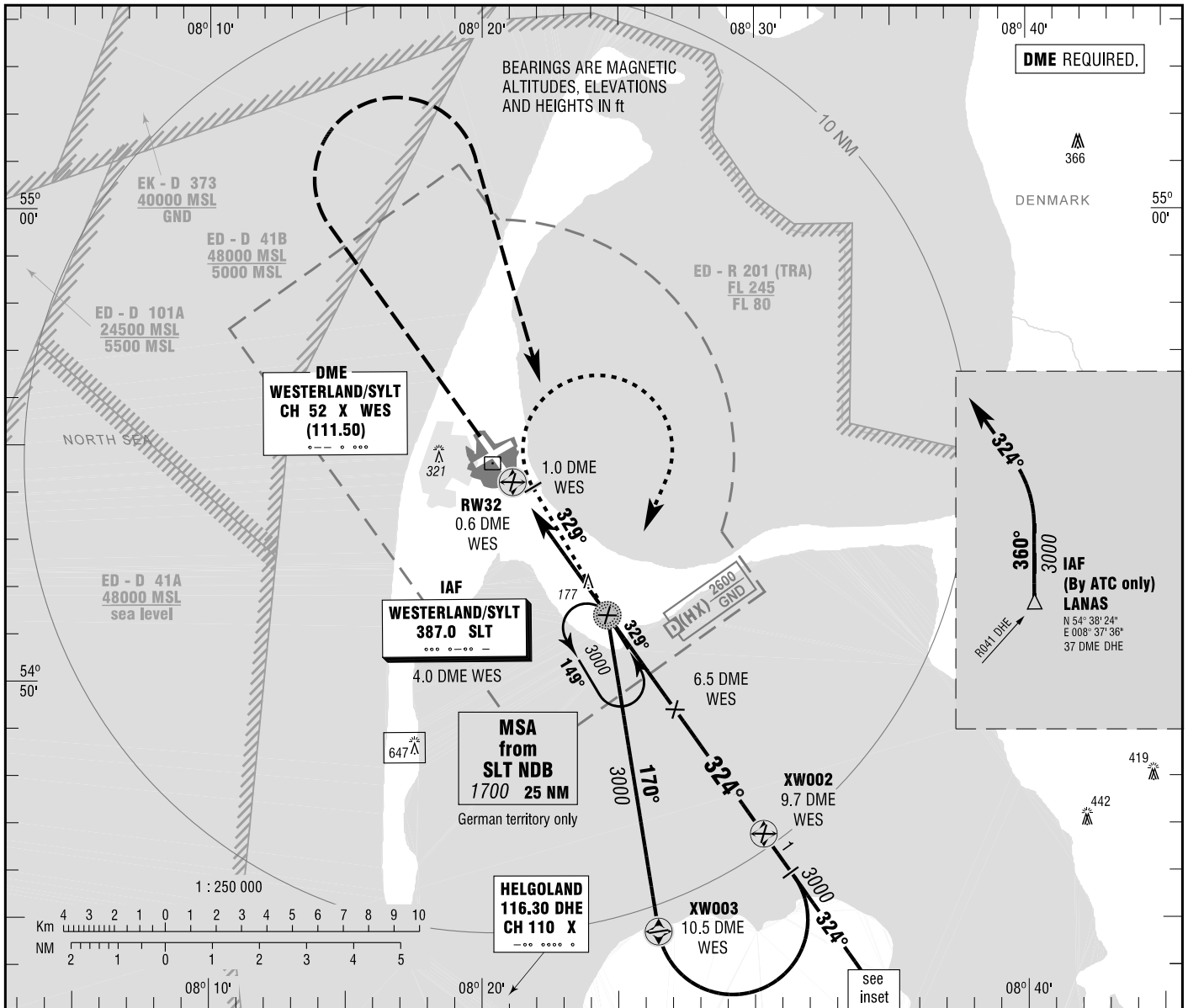


**INSTRUMENT
APPROACH
CHART - ICAO**

VAR 1° E
ELEV 51
OCH RELATED TO
THR 32 ELEV 31

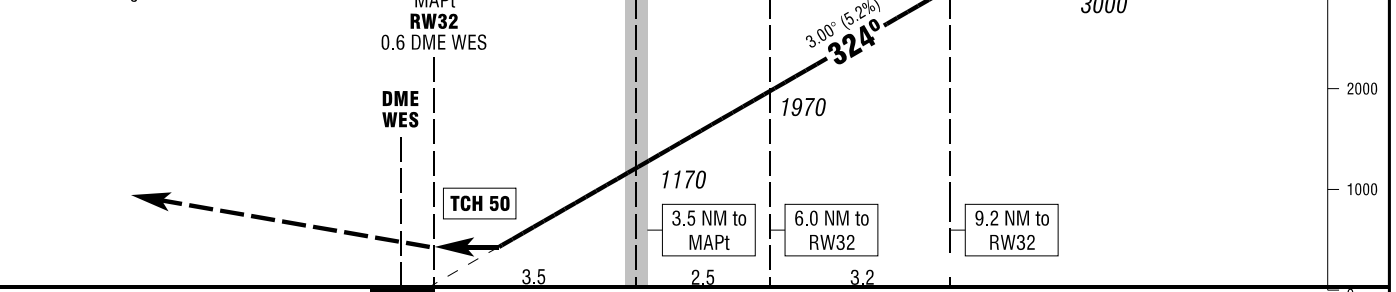
BREMEN RADAR 124.075
TOWER 119.750

SYLT
NDB (GPS)
RWY 32



MISSED APPROACH PROCEDURE

Climb straight ahead to 1000; RT to
SLT NDB climbing to 3000.



OCA (OCH)	A	B	C	D
NDB-DME (GPS)	430 (400)	430 (400)	430 (400)	570 (540)
CIRCLING *	620 (570)	620 (570)	720 (670)	740** (690)

DME WES	2	3	4	5	6	7	8	9
DIST THR	1.4	2.4	3.4	4.4	5.4	6.4	7.4	8.4
ALTITUDE	530	850	1170	1490	1810	2130	2440	2760

Timing not authorized for defining the MAPt.

GS	kt	80	100	120	140	160	180
SLT NDB - 0.6 DME WES (3.5 NM)	MIN:SEC	2:38	2:06	1:45	1:30	1:19	1:10
Rate of descent (5.2%)	ft / MIN	430	530	640	740	850	960

* CIRCLING E OF AERODROME ONLY. CIRCLING FOR RWY 06 NOT PERMITTED. ** CIRCLING RWY 24 FOR CAT D AIRCRAFT NOT PERMITTED.

Correction: RADAR frequency, OCA(H), Variation.