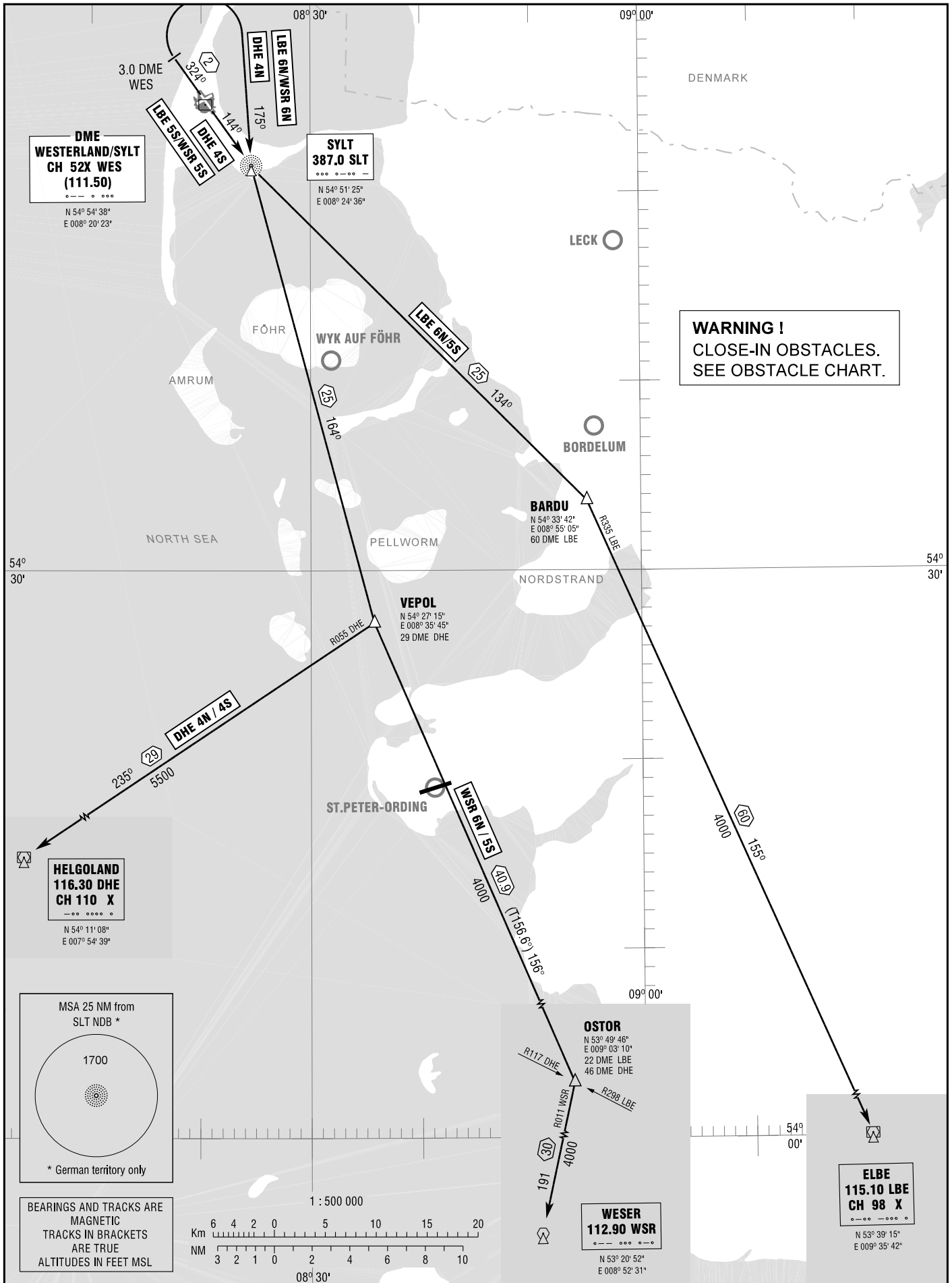


STANDARD DEPARTURE  
CHART - INSTRUMENT  
(SID)

TRANSITION  
ALTITUDE 5000  
VAR 1° E

BREMEN RADAR 124.075  
TOWER 119.750

SYLT  
RWY 14/32



STANDARD DEPARTURE  
ROUTES – INSTRUMENT  
(SID)

SYLT  
RWY 14/32

Designator	Route	After Take-Off		Remarks
		Climb to	Contact	
1	2	3	4	5
<b>RWY 14</b>				
<b>LBE 5S</b>	<b>ELBE FIVE SIERRA</b> On track 144° SLT to SLT(Δ); LT, on track 134° SLT to BARDU (Δ); RT, on R335 LBE to LBE (Δ). <b>GPS/FMS RNAV:</b> [A500+] - SLT[L] - BARDU[R] - LBE.	4000 ft	Bremen Radar   124.075	Not available for destination EDDH / EDHI / EDHL.
<b>WSR 5S</b>	<b>WESER FIVE SIERRA</b> On track 144° SLT to SLT (Δ); RT, on track 164° SLT to VEPOL (Δ); LT, on track 156° to OSTOR (Δ); RT, on R011 WSR to WSR (Δ). <b>GPS/FMS RNAV:</b> [A500+] - SLT[R] - VEPOL[L] - OSTOR[R] - WSR.			1. Between VEPOL and OSTOR BRNAV equipment necessary. 2. For destination EDDH / EDHI / EDHL proceed after OSTOR to RIBSO.
<b>DHE 4S</b>	<b>HELGOLAND FOUR SIERRA</b> On track 144° SLT to SLT(Δ); RT, on track 164° SLT to VEPOL (Δ); RT, on R055 DHE to DHE (Δ). <b>GPS/FMS RNAV:</b> [A500+] - SLT[R] - VEPOL[R] - DHE.			
<b>RWY 32</b>				
<b>LBE 6N</b>	<b>ELBE SIX NOVEMBER</b> On track 324° SLT to 3.0 DME WES; RT, on track 175° to SLT (Δ); on track 134° SLT to BARDU (Δ), on R335 LBE to LBE (Δ). <b>GPS/FMS RNAV:</b> [A500+] - XW100[R] - XW101 - SLT[L] - BARDU[R] - LBE.	4000 ft	Bremen Radar   124.075	Not available for destination EDDH / EDHI / EDHL.
<b>WSR 6N</b>	<b>WESER SIX NOVEMBER</b> On track 324° SLT to 3.0 DME WES; RT, on track 175° to SLT (Δ); on track 164° SLT to VEPOL (Δ); LT, on track 156° to OSTOR (Δ); RT, on R011 WSR to WSR (Δ). <b>GPS/FMS RNAV:</b> [A500+] - XW100[R] - XW101 - SLT[L] - VEPOL[L] - OSTOR[R] - WSR.			1. Between VEPOL and OSTOR BRNAV equipment necessary. 2. For destination EDDH / EDHI / EDHL proceed after OSTOR to RIBSO.
<b>DHE 4N</b>	<b>HELGOLAND FOUR NOVEMBER</b> On track 324° SLT to 3.0 DME WES; RT, on track 175° to SLT(Δ); on track 164° SLT to VEPOL (Δ); RT, on R055 DHE to DHE (Δ). <b>GPS/FMS RNAV:</b> [A500+] - XW100[R] - XW101 - SLT[L] - VEPOL[R] - DHE.			
(Sample: XW100 fly-over way point)				
<div style="border: 1px solid black; padding: 5px; display: inline-block;">                     Contact Bremen Radar immediately after take-off!                 </div>				