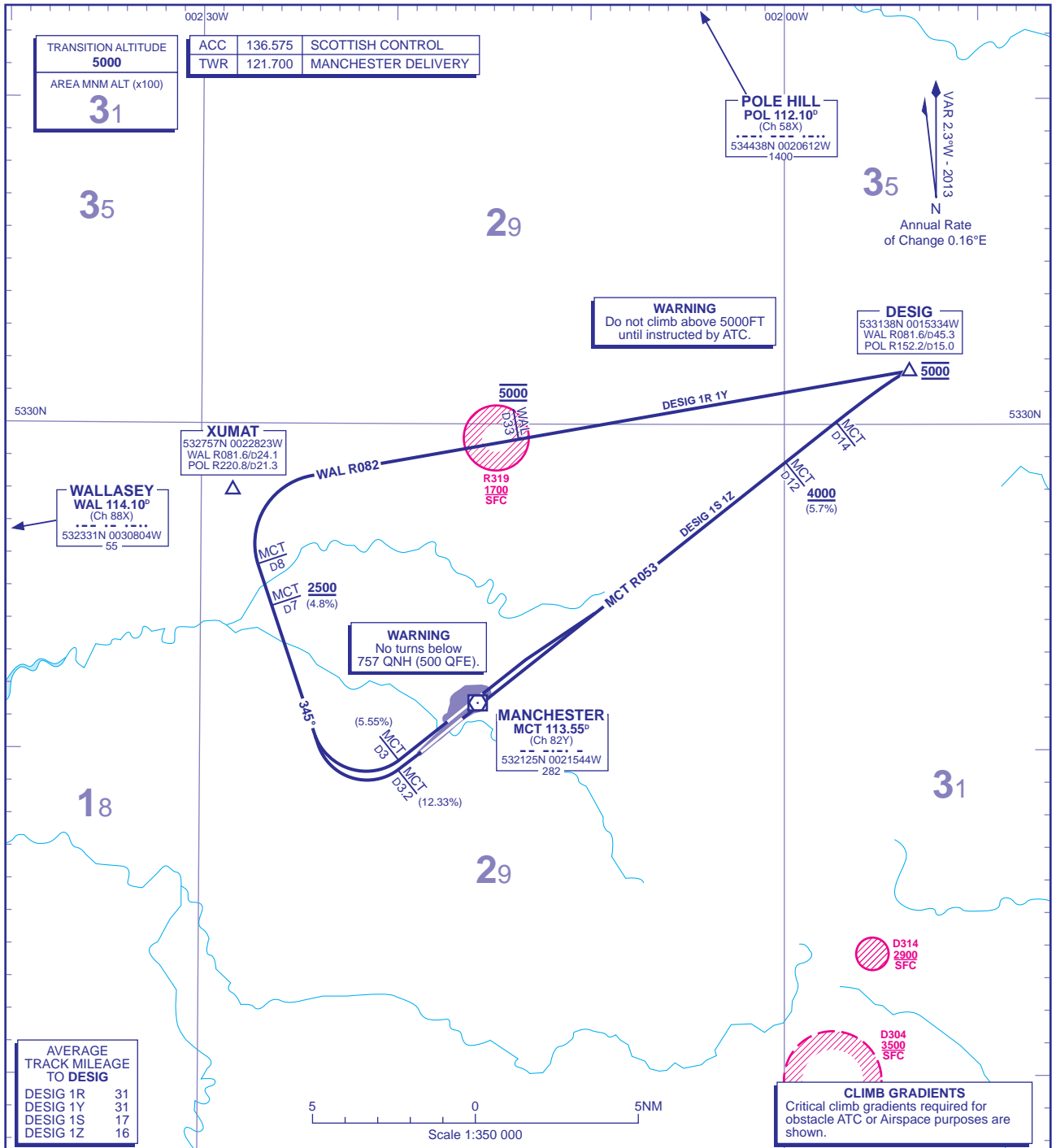


STANDARD DEPARTURE CHART - INSTRUMENT (SID) - ICAO

DISTANCES IN NAUTICAL MILES
BEARINGS, TRACKS AND RADIALS ARE MAGNETIC
ALTITUDES AND ELEVATIONS ARE IN FEET

MANCHESTER DESIG 1R 1Y 1S 1Z



DESIG 1R RWY 23R†	Climb straight ahead at 5.55% or above (See Note 5). At MCT D3 turn right onto track 345° towards XUMAT. Cross MCT D7 at 2500 or above (4.8%). At MCT D8 turn right onto WAL VOR R082 to DESIG. Cross WAL D33 at 5000. Cross DESIG at 5000.	L975, L603, L26, Y70 Eastbound
DESIG 1Y RWY 23L	Climb straight ahead at 12.33% or above (See Note 5). At MCT D3.2 turn right onto track 345° towards XUMAT. Cross MCT D7 at 2500 or above (4.8%). At MCT D8 turn right onto WAL VOR R082 to DESIG. Cross WAL D33 at 5000. Cross DESIG at 5000.	L975, L603, L26, Y70 Eastbound
DESIG 1S RWY 05L†	Climb straight ahead. At not below 757 ALT (500 AAL) , but not before DER, adjust track onto MCT VOR R053 (See Note 5). Cross MCT D12 at 4000 or above (5.7%). At MCT D14 turn right to intercept WAL VOR R082 to DESIG. Cross DESIG at 5000.	L975, L603, L26, Y70 Eastbound
DESIG 1Z RWY 05R	Climb straight ahead on MCT VOR R053 (See Note 5). Cross MCT D12 at 4000 or above (5.7%). At MCT D14 turn right to intercept WAL VOR R082 to DESIG. Cross DESIG at 5000.	L975, L603, L26, Y70 Eastbound

OBSTACLE CLEARANCE - † RWY 23R/RWY 05L: Close in obstacles exist below 100 AAL and are not considered for procedure gradients.

- GENERAL INFORMATION**
- SIDs reflect Noise Preferential Routings. See EGCC AD 2.21 for Noise Abatement Procedures.
 - En-route cruising levels will be allocated after departure by 'Scottish Control'. **Do not climb above SID level until cleared by ATC.**
 - Call sign for RTF frequency used **when instructed** after take-off 'Scottish Control'. On first contact advise call sign/SID designator current altitude and cleared altitude.
 - Maximum 250KIAS below FL100 unless otherwise authorised.
 - WARNING: RUNWAY 23L/05L. In the event of a missed approach on runway 23L/05L ATC may instruct aircraft which have departed from runway 23L/05L to make a LEFT turn in order to establish separation.**
 - Expect first CPDLC Data Link Authority to be EGT.

CHANGE (6/13): MAG VAR. NOTE 6. DESIG 1S/1Z MCT R053. WAYPOINTS DESIG, XUMAT WAL VOR RADIALS.