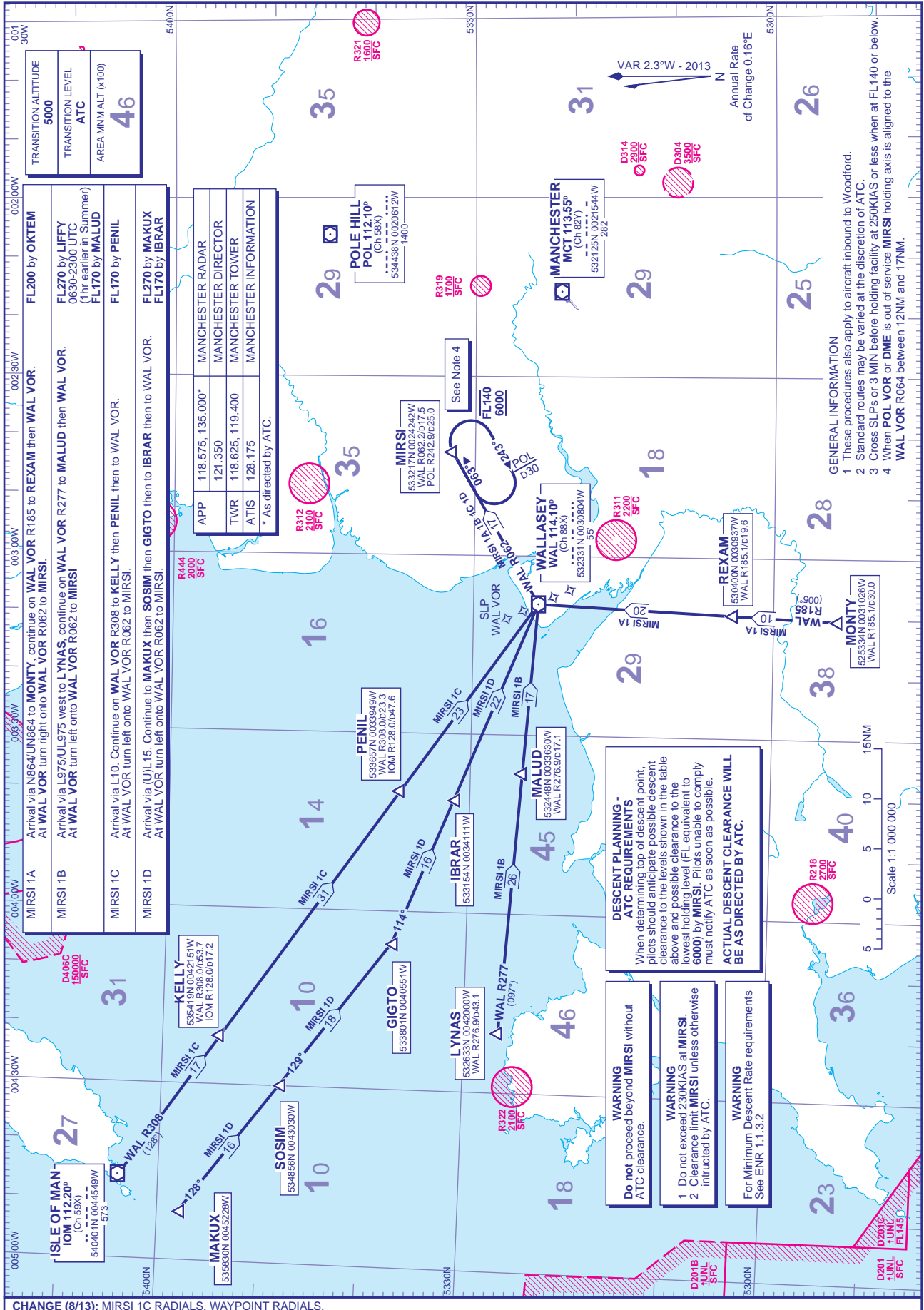


STANDARD ARRIVAL CHART - INSTRUMENT (STAR) - ICAO

DISTANCES IN NAUTICAL MILES BEARINGS, TRACKS AND RADIALS ARE MAGNETIC ALTITUDES AND ELEVATIONS ARE IN FEET

MANCHESTER via MIRSI



CHANGE (8/13): MIRSI 1C RADIALS. WAYPOINT RADIALS.

AERO INFO DATE 22 APR 13