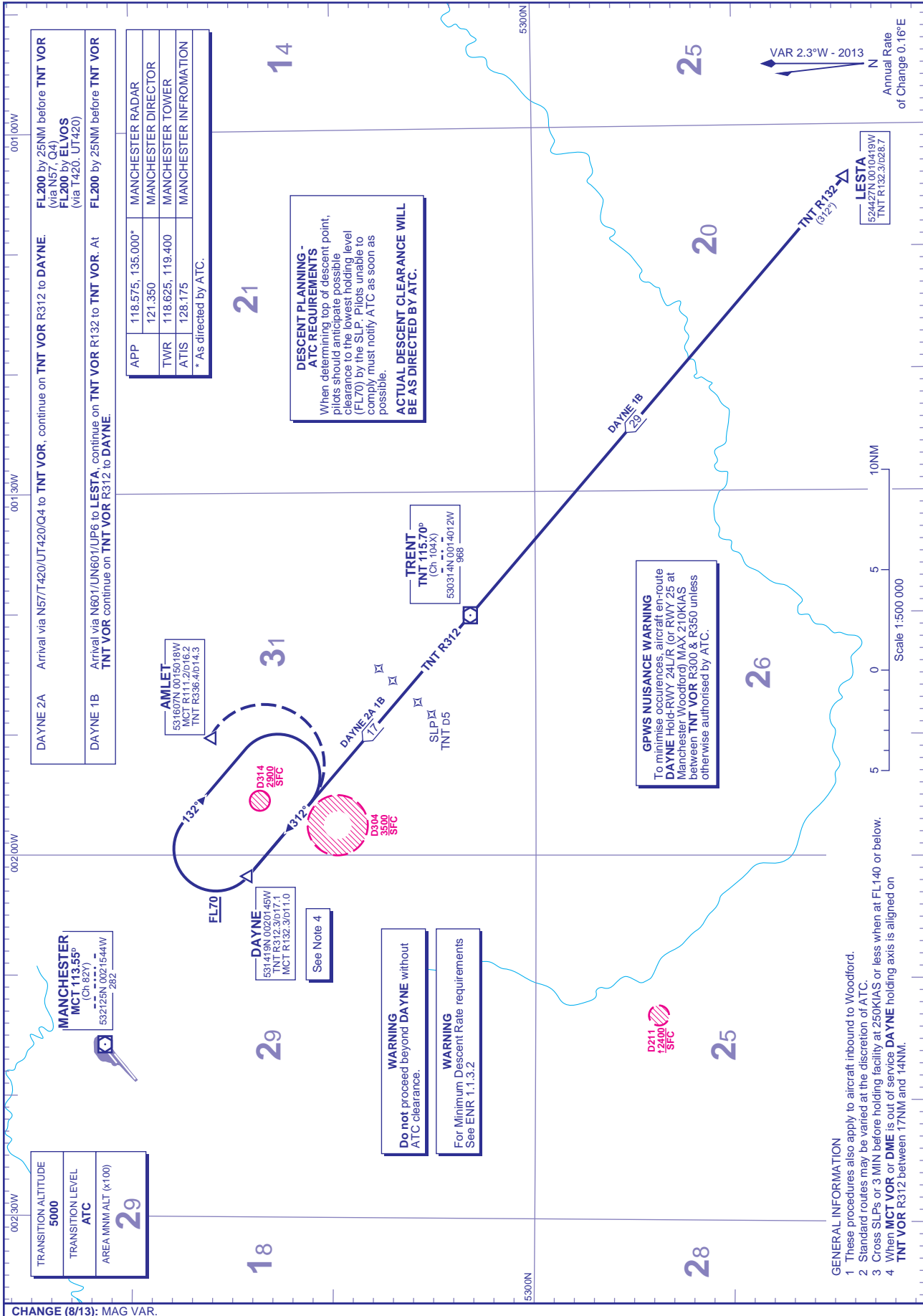


STANDARD ARRIVAL CHART - INSTRUMENT (STAR) - ICAO

DISTANCES IN NAUTICAL MILES
BEARINGS, TRACKS AND RADIALS ARE MAGNETIC
ALTITUDES AND ELEVATIONS ARE IN FEET

**MANCHESTER
via DAYNE**



CHANGE (8/13): MAG VAR.
AERO INFO DATE 12 APR 13