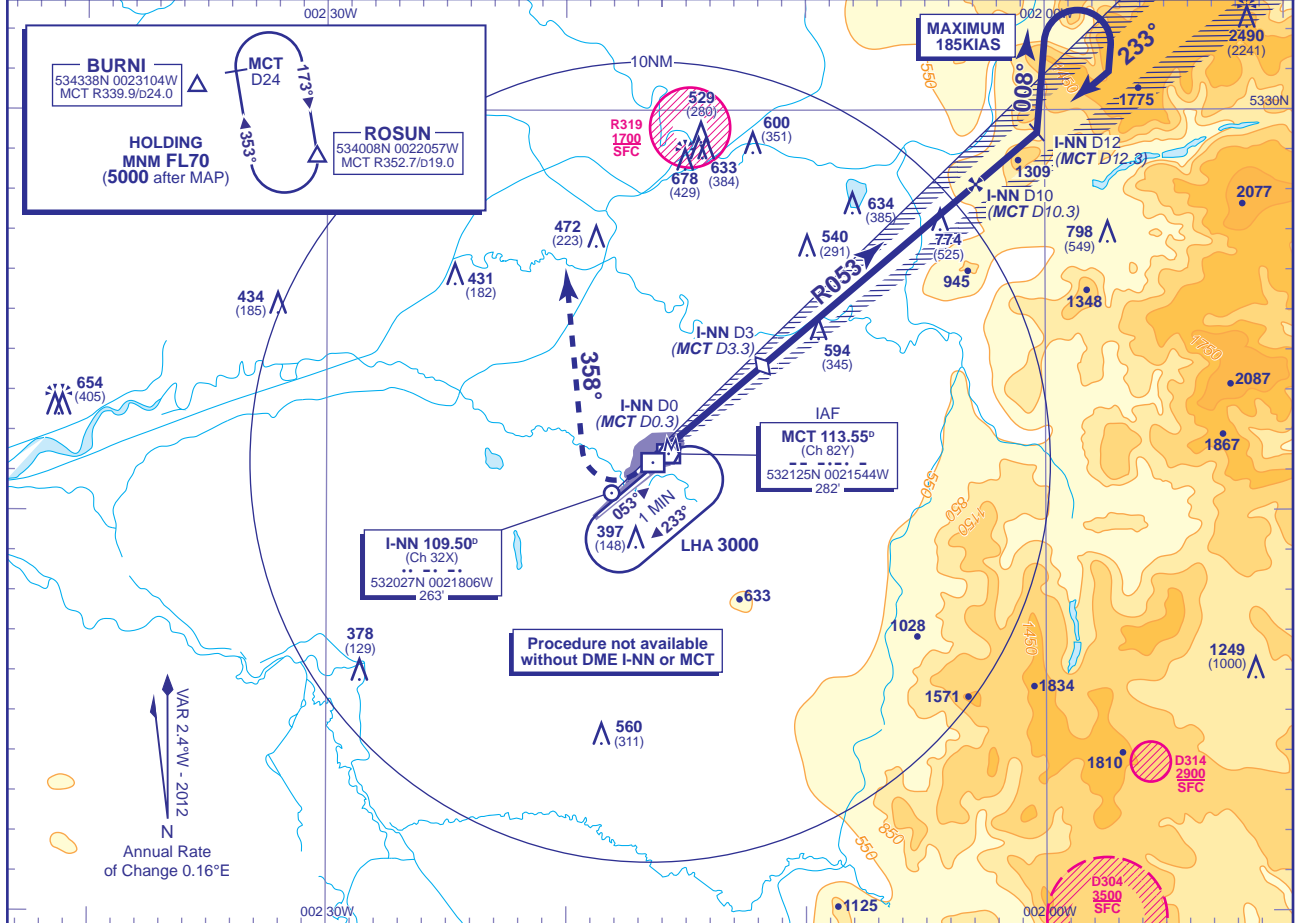


INSTRUMENT APPROACH CHART - ICAO

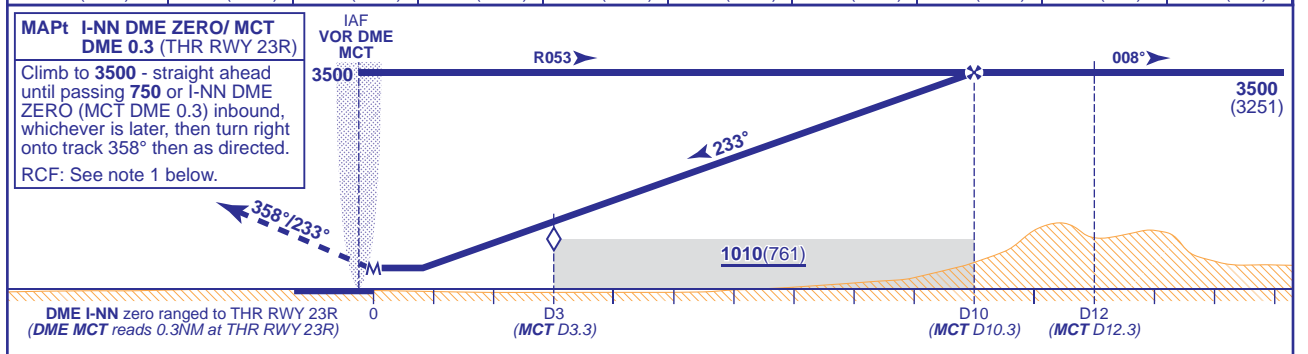
**MANCHESTER
LOC/DME
RWY 23R**
(ACFT CAT A,B,C,D)

<p>MSA 25NM VOR MCT</p>	APP	118.575, 135.000	MANCHESTER RADAR	AD ELEVATION	257
		121.350	MANCHESTER DIRECTOR	THR ELEVATION	249
	TWR	118.625, 119.400	MANCHESTER TOWER	OBSTACLE ELEVATION	2490 AMSL (2241) (ABOVE THR)
		121.850, 121.700	MANCHESTER GROUND		
	ARRIVAL ATIS	128.175	MANCHESTER INFORMATION	BEARINGS ARE MAGNETIC	TRANSITION ALTITUDE



RECOMMENDED PROFILE Gradient 5.2%, 320FT/NM

DME I-NN(MCT)	9(9.3)	8(8.3)	7(7.3)	6(6.3)	5(5.3)	4(4.3)	3(3.3) (SDF)	2(2.3)	1(1.3)
ALT(HGT)	3180(2931)	2860(2611)	2540(2291)	2220(1971)	1900(1651)	1580(1331)	1260(1011)	940(691)	620(371)



Aircraft Category	A	B	C	D	Rate of descent	G/S KT FT/MIN	160	140	120	100	80
							850	750	640	530	430
OCA (OCH)	Procedure	640(391)	640(391)	640(391)	640(391)						
VM(C)OCA (OCH AAL)	Total Area	750(493)	820(563)	1110(853)	1110(853)						

NOTE 1 In the event of RCF follow the standard MAP on to track 358°. At MCT DME 10 turn direct to BURNI (MCT R340/MCT DME 24) climbing to 5000 to enter the ROSUN hold. Aircraft unable to make 3500 before MCT DME 10, commence climbing turn left to 3500 at MCT DME 10. At 3500 or above continue left turn and proceed direct to BURNI.
2 DME MCT may be used if DME I-NN is not available.
3 Procedure turns restricted to maximum 185KIAS.

CHANGE (7/12): MAG VAR. ANNUAL RATE OF CHANGE. PROCEDURE. ROSUN HOLD AND BURNI REP. OCA(OCH).