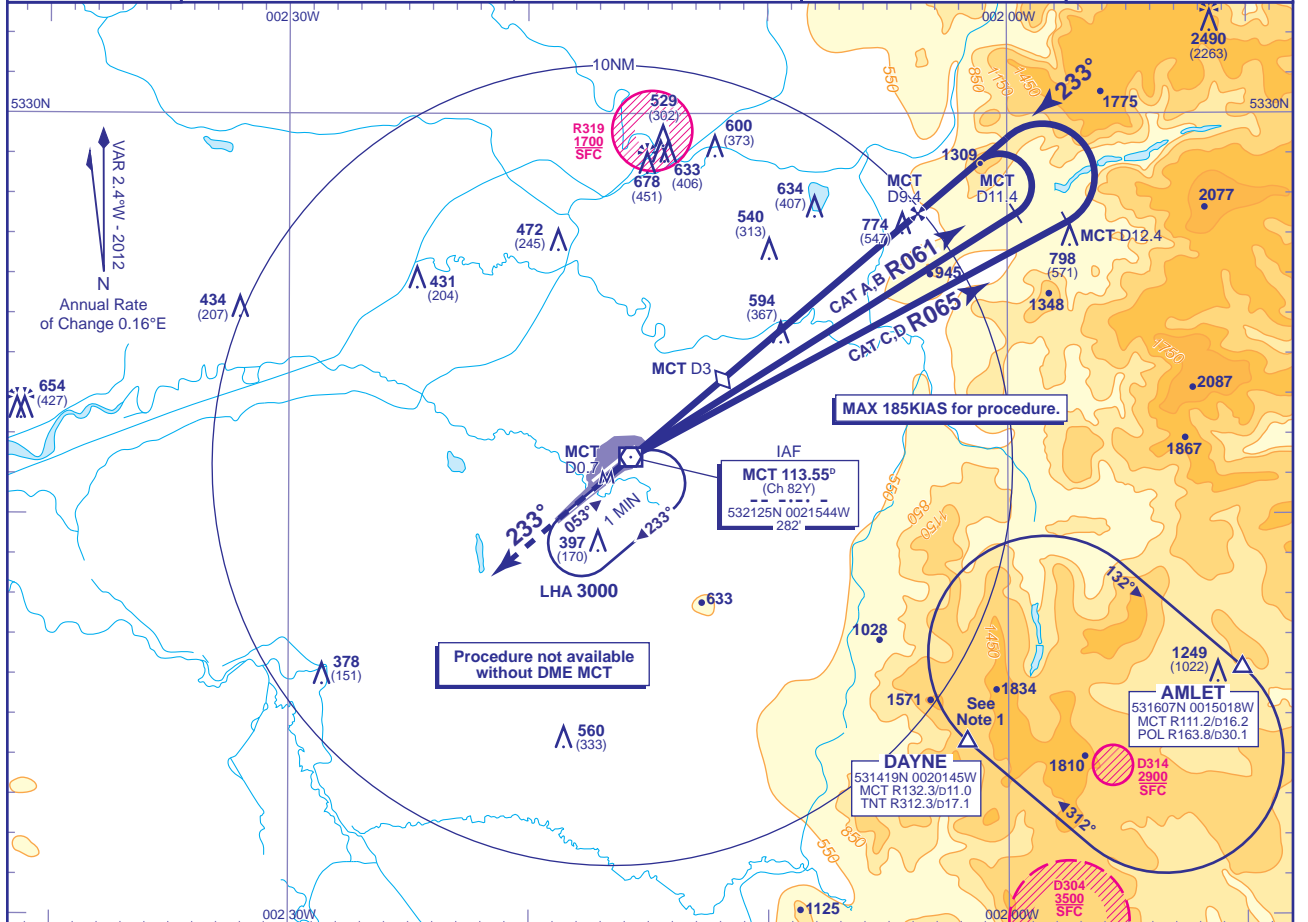


INSTRUMENT APPROACH CHART - ICAO

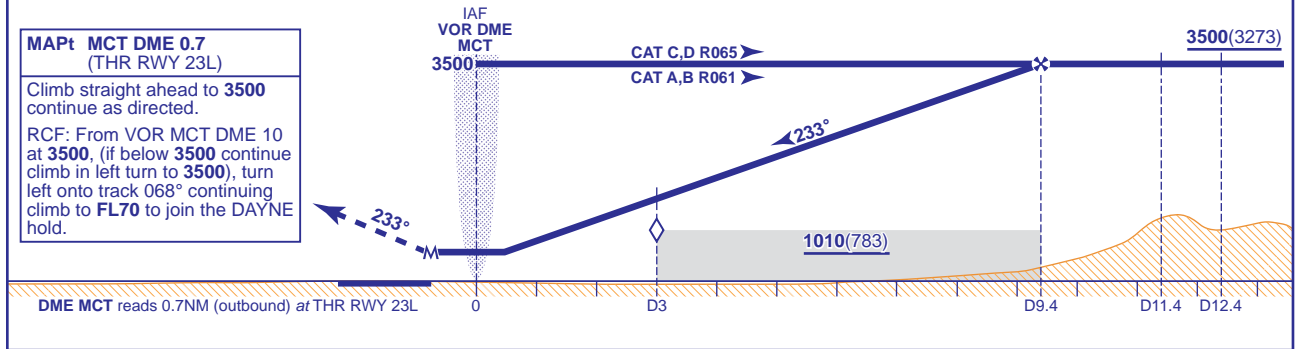
**MANCHESTER**  
**VOR/DME**  
**RWY 23L**  
 (ACFT CAT A,B,C,D)

	APP	118.575, 135.000	MANCHESTER RADAR	AD ELEVATION	257
		121.350	MANCHESTER DIRECTOR	THR ELEVATION	227
	TWR	118.625, 119.400	MANCHESTER TOWER	OBSTACLE ELEVATION	2490 AMSL (2263) (ABOVE THR)
		121.850, 121.700	MANCHESTER GROUND		
ARRIVAL ATIS	128.175	MANCHESTER INFORMATION	BEARINGS ARE MAGNETIC	TRANSITION ALTITUDE	5000



RECOMMENDED PROFILE Gradient 5.2%, 320FT/NM

DME MCT	9	8	7	6	5	4	3(SDF)	2	1
ALT(HGT)	3370(3143)	3050(2823)	2730(2503)	2420(2193)	2100(1873)	1780(1553)	1460(1233)	1140(913)	820(593)



Aircraft Category		A	B	C	D	Rate of descent	G/S KT	160	140	120	100	80
OCA (OCH)	Procedure	690(463)	690(463)	690(463)	690(463)		FT/MIN	850	750	640	530	430
VM(C)OCA (OCH AAL)	Total Area	750(493)	820(563)	1110(853)	1110(853)							

NOTE 1 DAYNE HOLD:- Limiting outbound distance MCT DME 16/TNT DME 14. Minimum holding level is FL70.  
 2 Procedure restricted to maximum 185KIAS.

CHANGE (9/12): DAYNE HOLD.

AERO INFO DATE 13 JUN 12