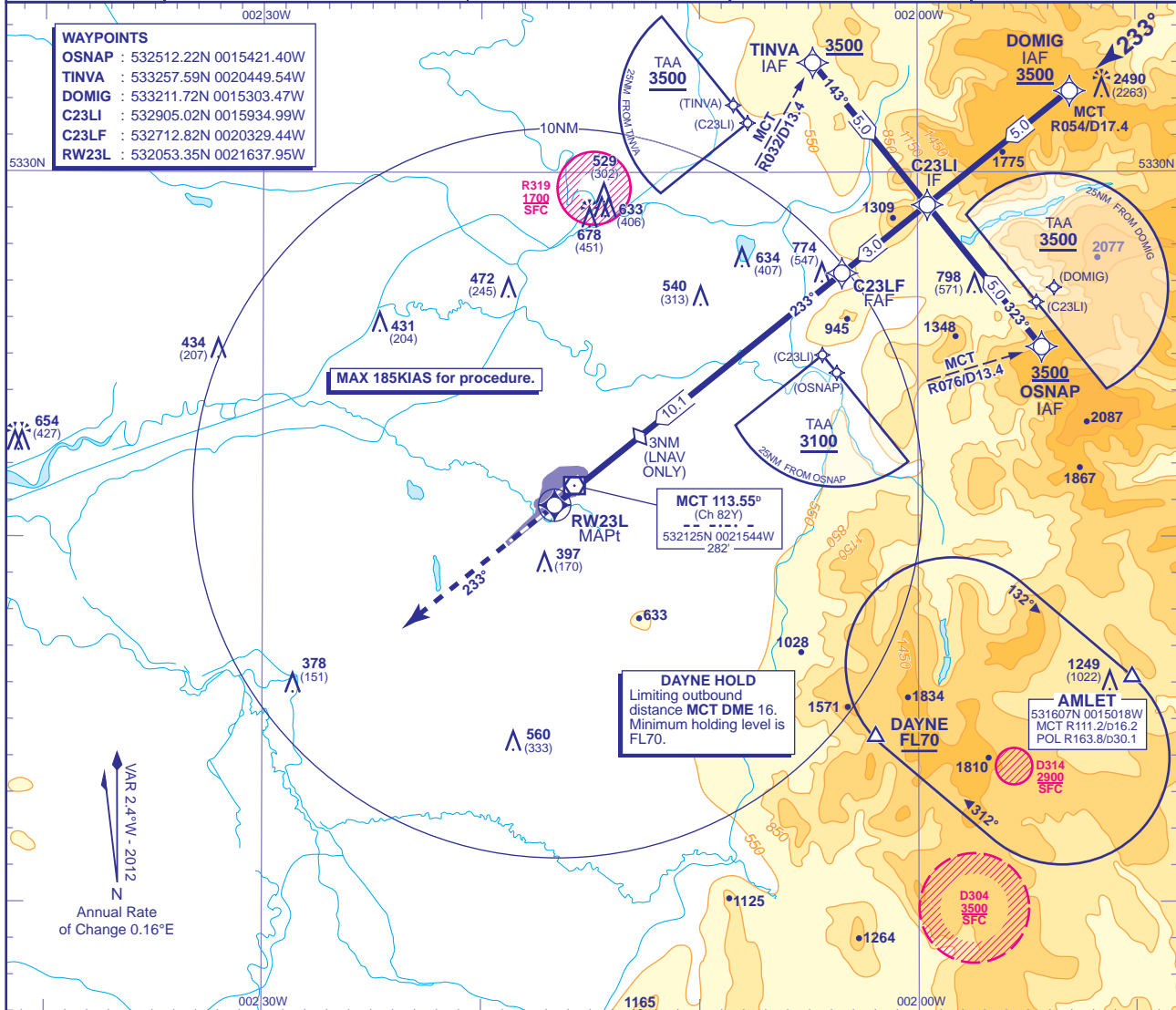


INSTRUMENT APPROACH CHART - ICAO

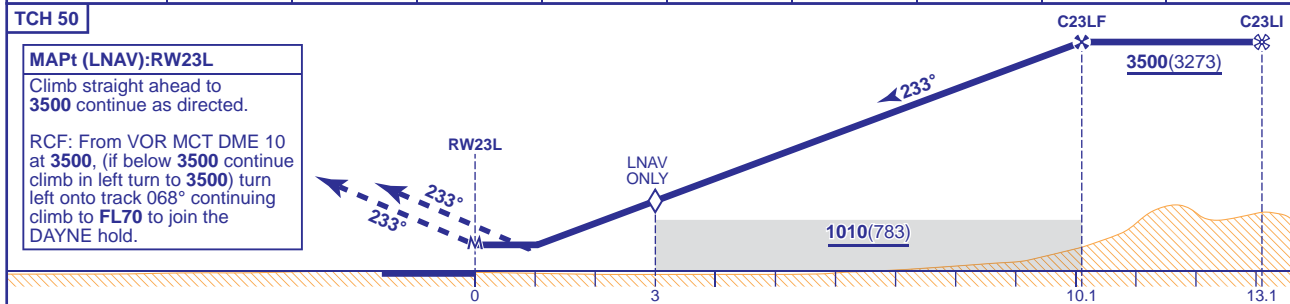
MANCHESTER
RNAV(GNSS)
RWY 23L
(ACFT CAT A,B,C,D)

<p>MSA 25NM MCT</p>	APP	118.575, 135.000	MANCHESTER RADAR	AD ELEVATION	257
		121.350	MANCHESTER DIRECTOR	THR ELEVATION	227
	TWR	118.625, 119.400	MANCHESTER TOWER	OBSTACLE ELEVATION	2490 AMSL (2263) (ABOVE THR)
		121.850, 121.700	MANCHESTER GROUND	BEARINGS ARE MAGNETIC	
	ARRIVAL ATIS	128.175	MANCHESTER INFORMATION		
				MIN TEMP	-15°C
				TRANSITION ALTITUDE	5000



RECOMMENDED PROFILE VNAV VERTICAL PATH ANGLE 3.0°, 318FT/NM. LNAV Gradient 5.2%, 320FT/NM

NM to RW23L	10	9	8	7	6	5	4	3(LNAV SDF)	2
ALT(HGT)	3460(3233)	3140(2913)	2820(2593)	2510(2283)	2190(1963)	1870(1643)	1550(1323)	1230(1003)	910(683)



Aircraft Category	A	B	C	D	Rate of descent	G/S KT	160	140	120	100	80
	OCA (OCH)	LNAV/VNAV	680(453)	680(453)		680(453)	680(453)	FT/MIN	850	740	640
VM(C)OCA (OCH AAL)	Total Area	750(493)	820(563)	1110(853)	1110(853)						

NOTE 1 Pilots should 'Request RNAV Approach' on first contact with Manchester Radar.

CHANGE (9/12): DAYNE HOLD.

AERO INFO DATE 13 JUN 12

AMDT 9/12

Civil Aviation Authority