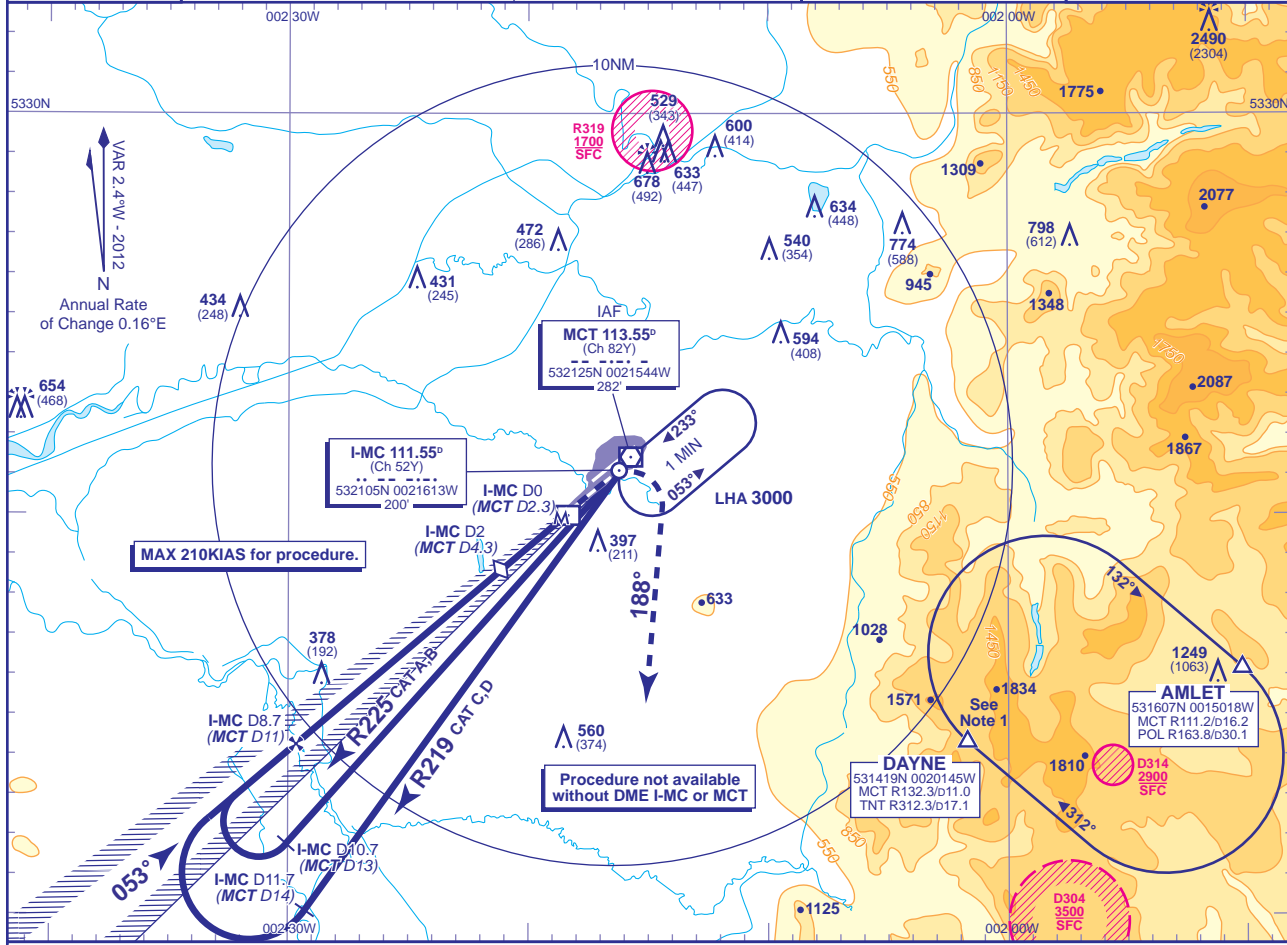


INSTRUMENT APPROACH CHART - ICAO

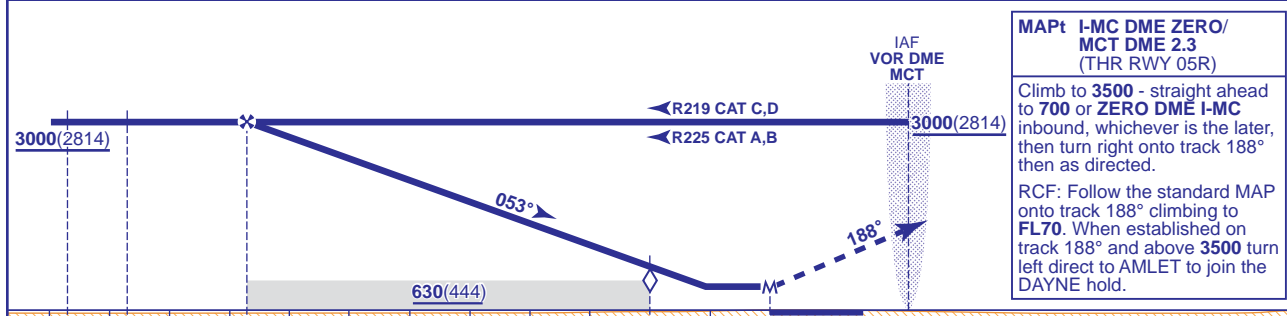
**MANCHESTER  
LOC/DME (I-MC)  
RWY 05R**  
(ACFT CAT A,B,C,D)

	APP	118.575, 135.000	MANCHESTER RADAR	AD ELEVATION	257
		121.350	MANCHESTER DIRECTOR	THR ELEVATION	186
	TWR	118.625, 119.400	MANCHESTER TOWER	OBSTACLE ELEVATION	2490 AMSL (2304) (ABOVE THR)
		121.850, 121.700	MANCHESTER GROUND	BEARINGS ARE MAGNETIC	
ARRIVAL ATIS	128.175	MANCHESTER INFORMATION		TRANSITION ALTITUDE	5000



RECOMMENDED PROFILE Gradient 5.2%, 320FT/NM

DME I-MC(MCT)	8(10.3)	7(9.3)	6(8.3)	5(7.3)	4(6.3)	3(5.3)	2(4.3)(SDF)	1(3.3)
ALT(HGT)	2780(2594)	2460(2274)	2140(1954)	1820(1634)	1510(1324)	1190(1004)	870(684)	550(364)



Aircraft Category		A	B	C	D	Rate of descent	G/S KT	160	140	120	100	80
OCA (OCH)	Procedure	530(344)	530(344)	530(344)	530(344)		FT/MIN	850	750	640	530	420
VM(C)OCA (OCH AAL)	Total Area	750(493)	820(563)	1110(853)	1110(853)							

**NOTE 1** DAYNE HOLD:- Limiting outbound distance MCT DME 16/TNT DME 14. Minimum holding level is FL70.  
**2** Procedure restricted to maximum 210KIAS.

CHANGE (7/12): MAG VAR. ANNUAL RATE OF CHANGE. AMLET & DAYNE REPORTING POINTS. PROCEDURE. DAYNE HOLD.