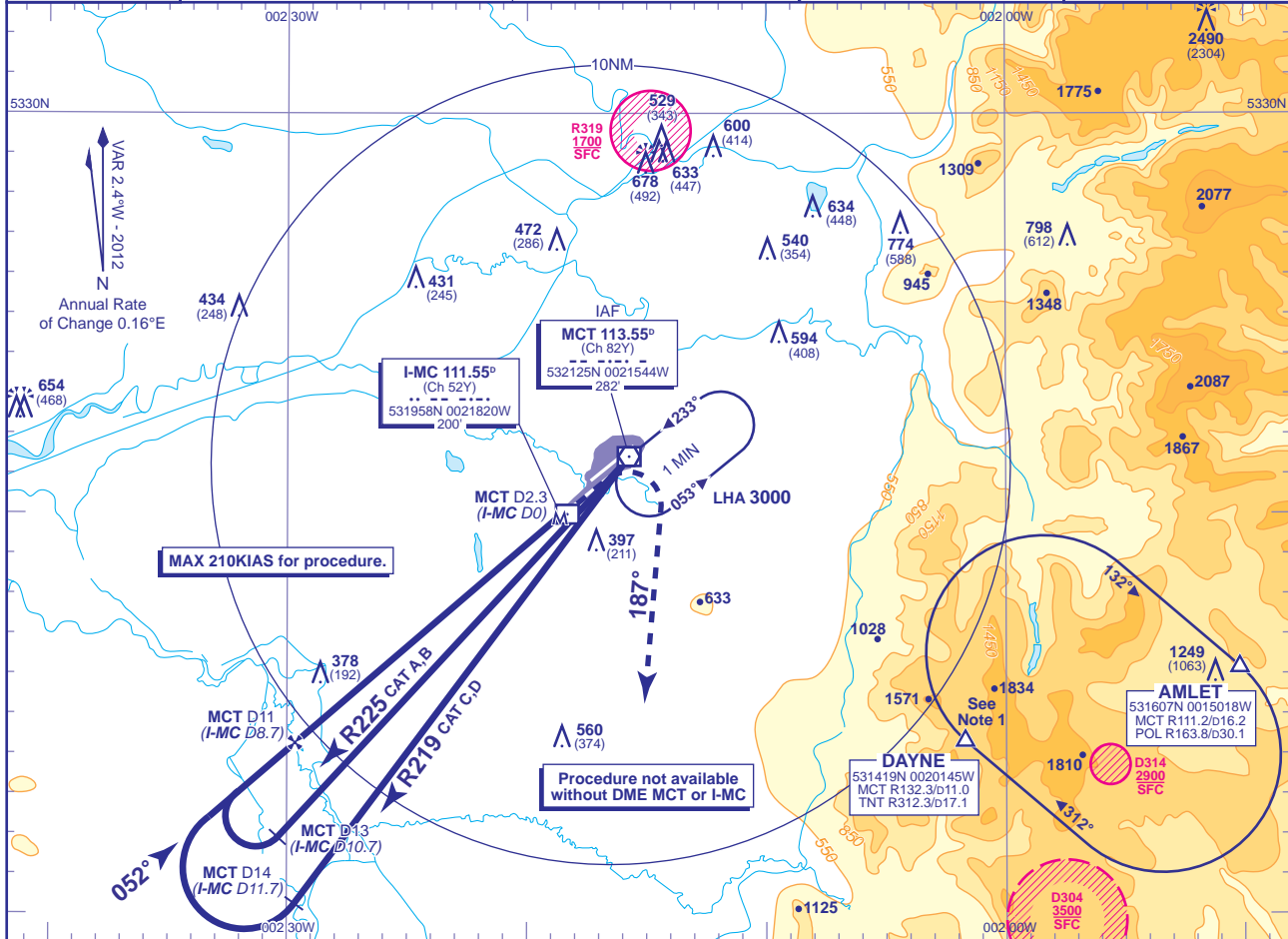


INSTRUMENT APPROACH CHART - ICAO

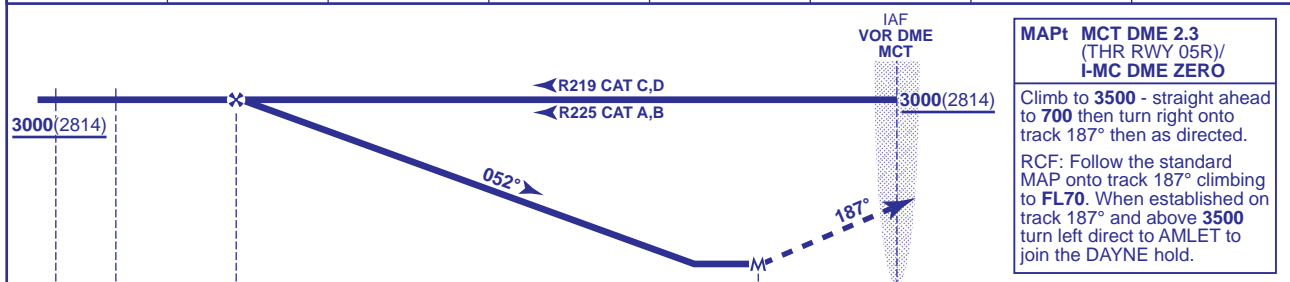
**MANCHESTER**  
**VOR/DME**  
**RWY 05R**  
 (ACFT CAT A,B,C,D)

	APP	118.575, 135.000	MANCHESTER RADAR	AD ELEVATION	257	
		121.350	MANCHESTER DIRECTOR	THR ELEVATION	186	
	TWR	118.625, 119.400	MANCHESTER TOWER	OBSTACLE ELEVATION	2490 AMSL (2304) (ABOVE THR)	
		121.850, 121.700	MANCHESTER GROUND	BEARINGS ARE MAGNETIC	TRANSITION ALTITUDE	5000
	ARRIVAL ATIS	128.175	MANCHESTER INFORMATION			



RECOMMENDED PROFILE Gradient 5.2%, 320FT/NM

DME MCT (I-MC)	10(7.7)	9(6.7)	8(5.7)	7(4.7)	6(3.7)	5(2.7)	4(1.7)
ALT(HGT)	2680(2494)	2360(2174)	2050(1864)	1730(1544)	1410(1224)	1090(904)	780(594)



**MAPt MCT DME 2.3**  
 (THR RWY 05R)/  
**I-MC DME ZERO**

Climb to 3500 - straight ahead to 700 then turn right onto track 187° then as directed.

RCF: Follow the standard MAP onto track 187° climbing to FL70. When established on track 187° and above 3500 turn left direct to the DAYNE hold.

D14 (I-MC D11.7)	D13 (I-MC D10.7)	D11 (I-MC D8.7)	D2.3 (I-MC D0)	0	DME MCT reads 2.3NM at THR RWY 05R (DME I-MC zero ranged to THR RWY 05R)
------------------	------------------	-----------------	----------------	---	--

Aircraft Category	A	B	C	D	Rate of descent	G/S KT					
OCA (OCH)	Procedure	630(444)	630(444)	630(444)		630(444)	160	140	120	100	80
VM(C)OCA (OCH AAL)	Total Area	750(493)	820(563)	1110(853)	1110(853)	FT/MIN	850	750	640	530	420

- NOTE 1** DAYNE HOLD:- Limiting outbound distance MCT DME 16/TNT DME 14. Minimum holding level is FL70.
- 2** DME I-MC may be used if MCT DME is not available.
- 3** Procedure restricted to maximum 210KIAS.
- 4** FAT offset 0.9° from RWY C/L.

CHANGE (9/12): PROCEDURE.

AERO INFO DATE 28 MAY 12

AMDT 9/12

Civil Aviation Authority