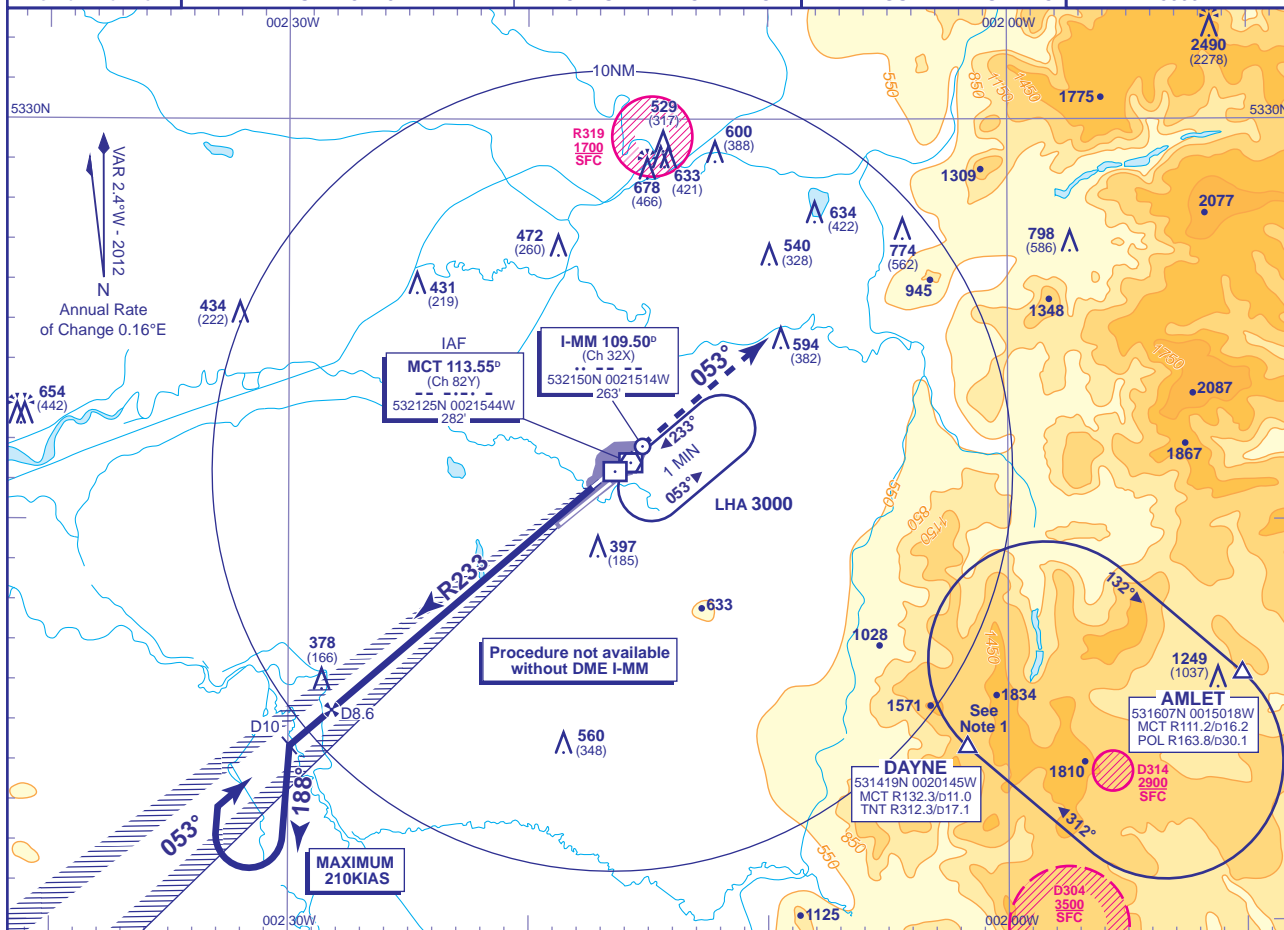


INSTRUMENT APPROACH CHART - ICAO

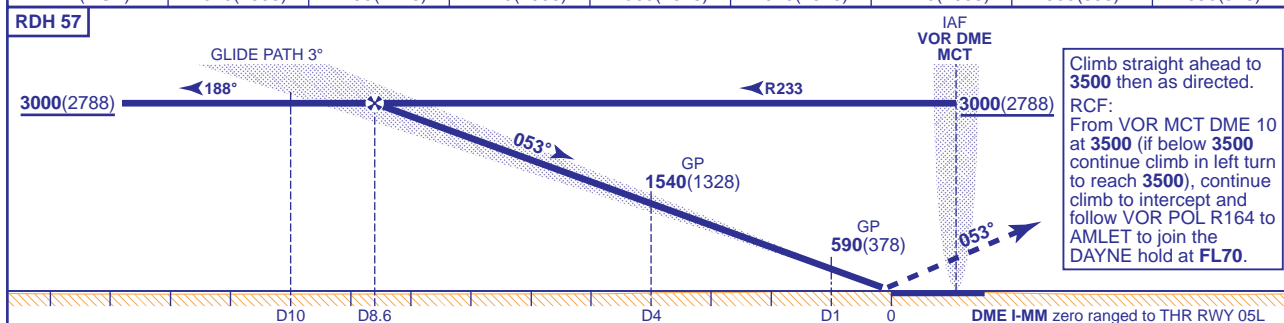
**MANCHESTER
ILS/DME (I-MM)
RWY 05L**
(ACFT CAT A,B,C,D)

	APP	118.575, 135.000	MANCHESTER RADAR	AD ELEVATION	257	TRANSITION ALTITUDE 5000
		121.350	MANCHESTER DIRECTOR	THR ELEVATION	212	
	TWR	118.625, 119.400	MANCHESTER TOWER	OBSTACLE ELEVATION	2490 AMSL (2278) (ABOVE THR)	
		121.850, 121.700	MANCHESTER GROUND	BEARINGS ARE MAGNETIC		
	ARRIVAL ATIS	128.175	MANCHESTER INFORMATION			



RECOMMENDED PROFILE GLIDE PATH 3°, 318FT/NM

DME I-MM	8	7	6	5	4	3	2	1
ALT(HGT)	2810(2598)	2490(2278)	2170(1958)	1860(1648)	1540(1328)	1220(1008)	900(688)	590(378)



Aircraft Category		A	B	C	D	Rate of descent	G/S KT				
OCA (OCH)		CAT I	CAT II				FT/MIN	160	140	120	100
VM(C)OCA (OCH AAL)		Total Area	750(493)	820(563)	1110(853)	1110(853)	850	740	640	530	420

NOTE 1 DAYNE HOLD:- Limiting outbound distance MCT DME 16/TNT DME 14. Minimum holding level is FL70.
2 Procedure turns restricted to maximum 210KIAS.

CHANGE (7/12): MAG VAR. ANNUAL RATE OF CHANGE. AMLET & DAYNE REPORTING POINTS. PROCEDURE. DAYNE HOLD.