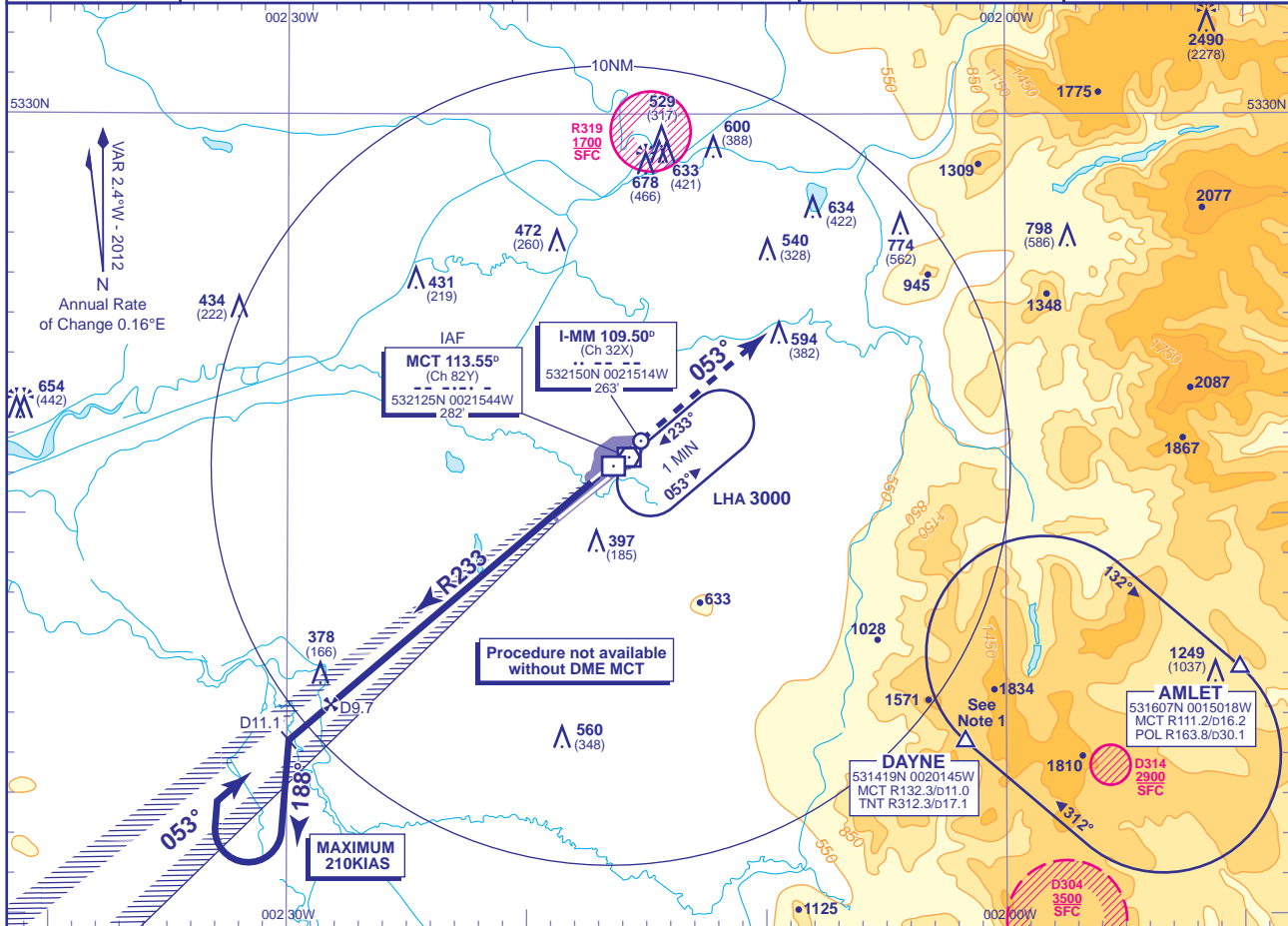


INSTRUMENT APPROACH CHART - ICAO

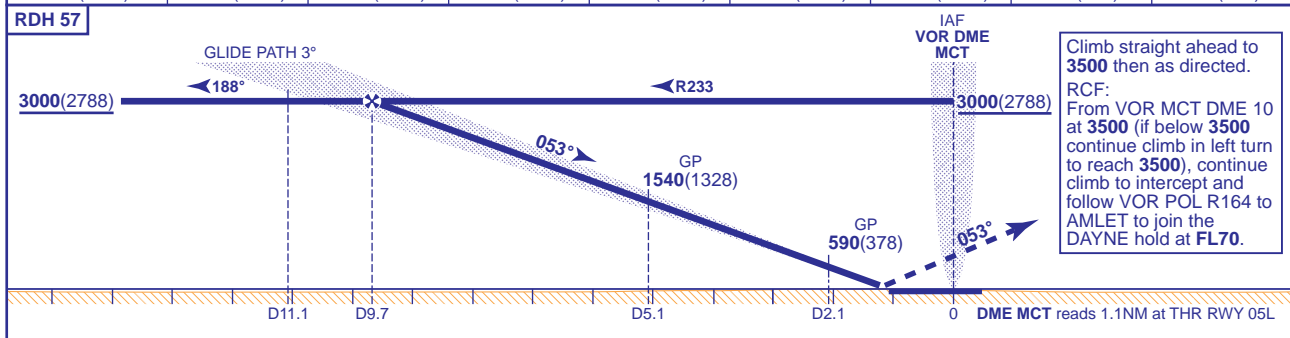
MANCHESTER ILS/DME (MCT) RWY 05L
(ACFT CAT A,B,C,D)

	APP	118.575, 135.000	MANCHESTER RADAR	AD ELEVATION	257	TRANSITION ALTITUDE
		121.350	MANCHESTER DIRECTOR	THR ELEVATION	212	
	TWR	118.625, 119.400	MANCHESTER TOWER	OBSTACLE ELEVATION	2490 AMSL (2278) (ABOVE THR)	
		121.850, 121.700	MANCHESTER GROUND	BEARINGS ARE MAGNETIC		
	ARRIVAL ATIS	128.175	MANCHESTER INFORMATION			



RECOMMENDED PROFILE GLIDE PATH 3°, 318FT/NM

DME MCT	9.1	8.1	7.1	6.1	5.1	4.1	3.1	2.1
ALT(HGT)	2810(2598)	2490(2278)	2170(1958)	1860(1648)	1540(1328)	1220(1008)	900(688)	590(378)



Aircraft Category		A	B	C	D	Rate of descent	G/S KT	160	140	120	100	80
OCA (OCH)	CAT I	369(157)	380(168)	392(180)	405(193)		FT/MIN	850	740	640	530	420
	CAT II	277(65)	289(77)									
VM(C)OCA (OCH AAL)	Total Area	750(493)	820(563)	1110(853)	1110(853)							

NOTE 1 DAYNE HOLD:- Limiting outbound distance MCT DME 16/TNT DME 14. Minimum holding level is FL70.
NOTE 2 Procedure turns restricted to maximum 210KIAS.

CHANGE (7/12): MAG VAR. ANNUAL RATE OF CHANGE. AMLET & DAYNE REPORTING POINTS. PROCEDURE. DAYNE HOLD.

AERO INFO DATE 16 APR 12