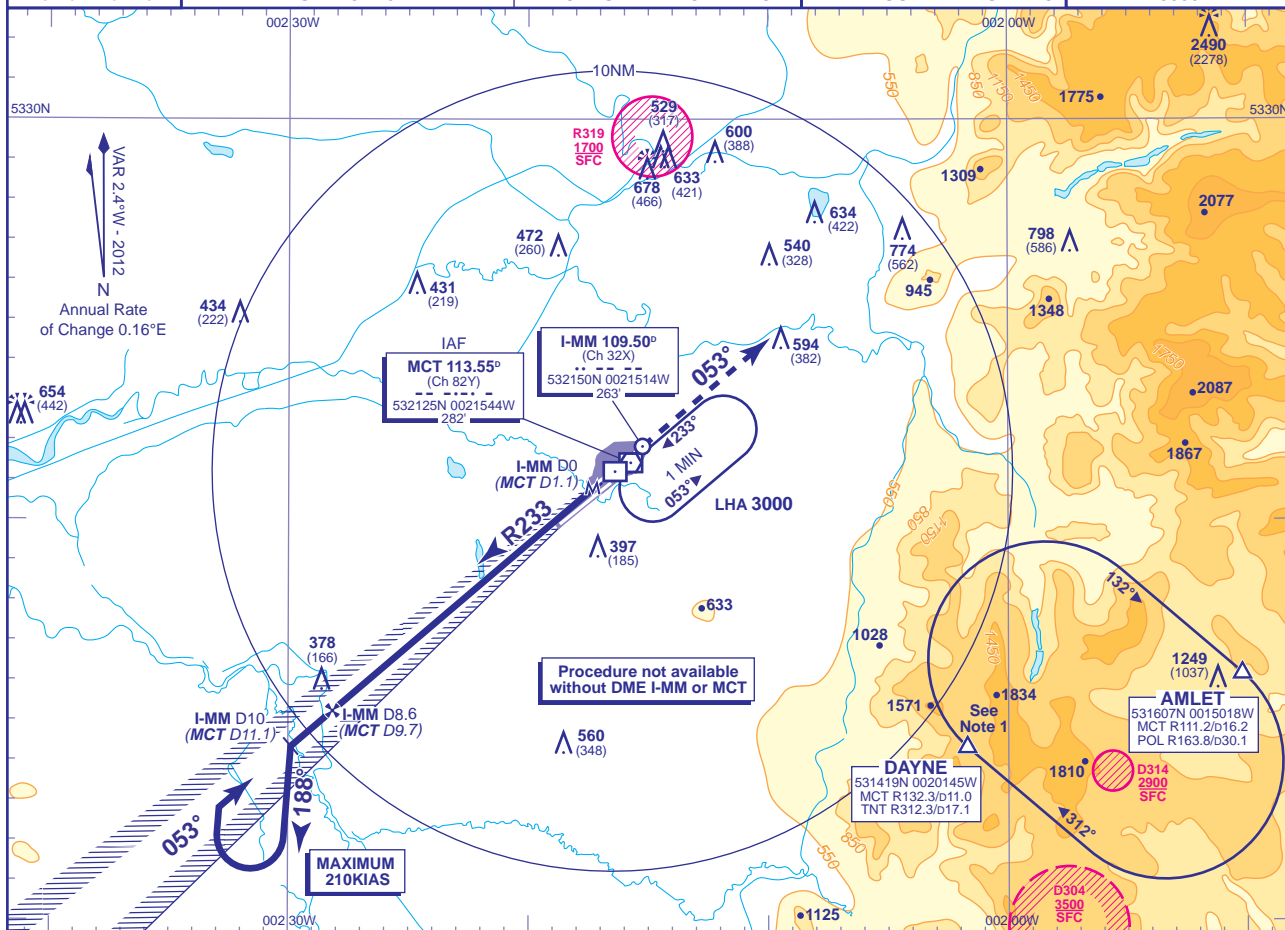


INSTRUMENT APPROACH CHART - ICAO

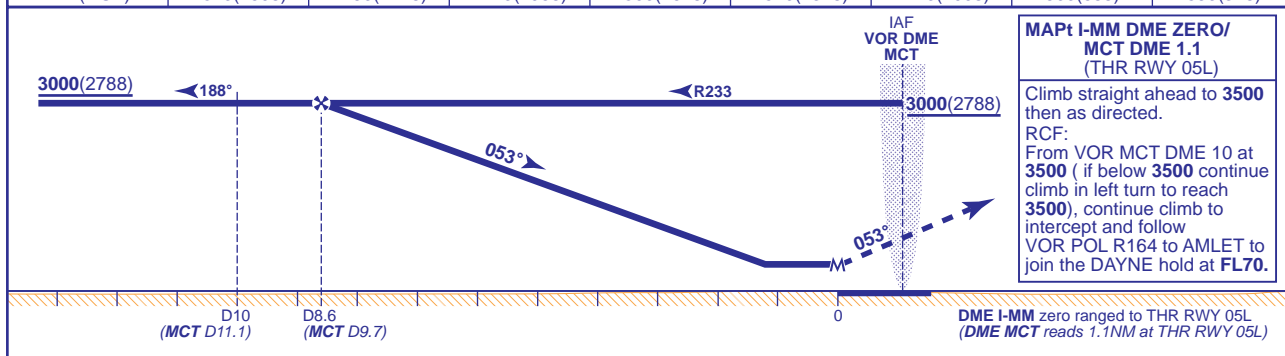
MANCHESTER
LOC/DME
RWY 05L
(ACFT CAT A,B,C,D)

	APP	118.575, 135.000	MANCHESTER RADAR	AD ELEVATION	257
		121.350	MANCHESTER DIRECTOR	THR ELEVATION	212
	TWR	118.625, 119.400	MANCHESTER TOWER	OBSTACLE ELEVATION	2490 AMSL (2278) (ABOVE THR)
		121.850, 121.700	MANCHESTER GROUND		
	ARRIVAL ATIS	128.175	MANCHESTER INFORMATION	BEARINGS ARE MAGNETIC	TRANSITION ALTITUDE



RECOMMENDED PROFILE Gradient 5.2%, 318FT/NM

DME I-MM(MCT)	8(9.1)	7(8.1)	6(7.1)	5(6.1)	4(5.1)	3(4.1)	2(3.1)	1(2.1)
ALT(HGT)	2810(2598)	2490(2278)	2170(1958)	1860(1648)	1540(1328)	1220(1008)	900(688)	590(378)



Aircraft Category	A	B	C	D	Rate of descent	G/S KT	160	140	120	100	80
OCA (OCH) Procedure	640(428)	640(428)	640(428)	640(428)		FT/MIN	850	740	640	530	420
VM(C)OCA (OCH AAL) Total Area	750(493)	820(563)	1110(853)	1110(853)							

NOTE 1 DAYNE HOLD:- Limiting outbound distance MCT DME 16/TNT DME 14. Minimum holding level is FL70.
NOTE 2 DME MCT may be used if DME I-MM is not available.
NOTE 3 Procedure turns restricted to maximum 210KIAS.

CHANGE (7/12): MAG VAR. ANNUAL RATE OF CHANGE. AMLET & DAYNE REPORTING POINTS. PROCEDURE. DAYNE HOLD. OCA(OCH).