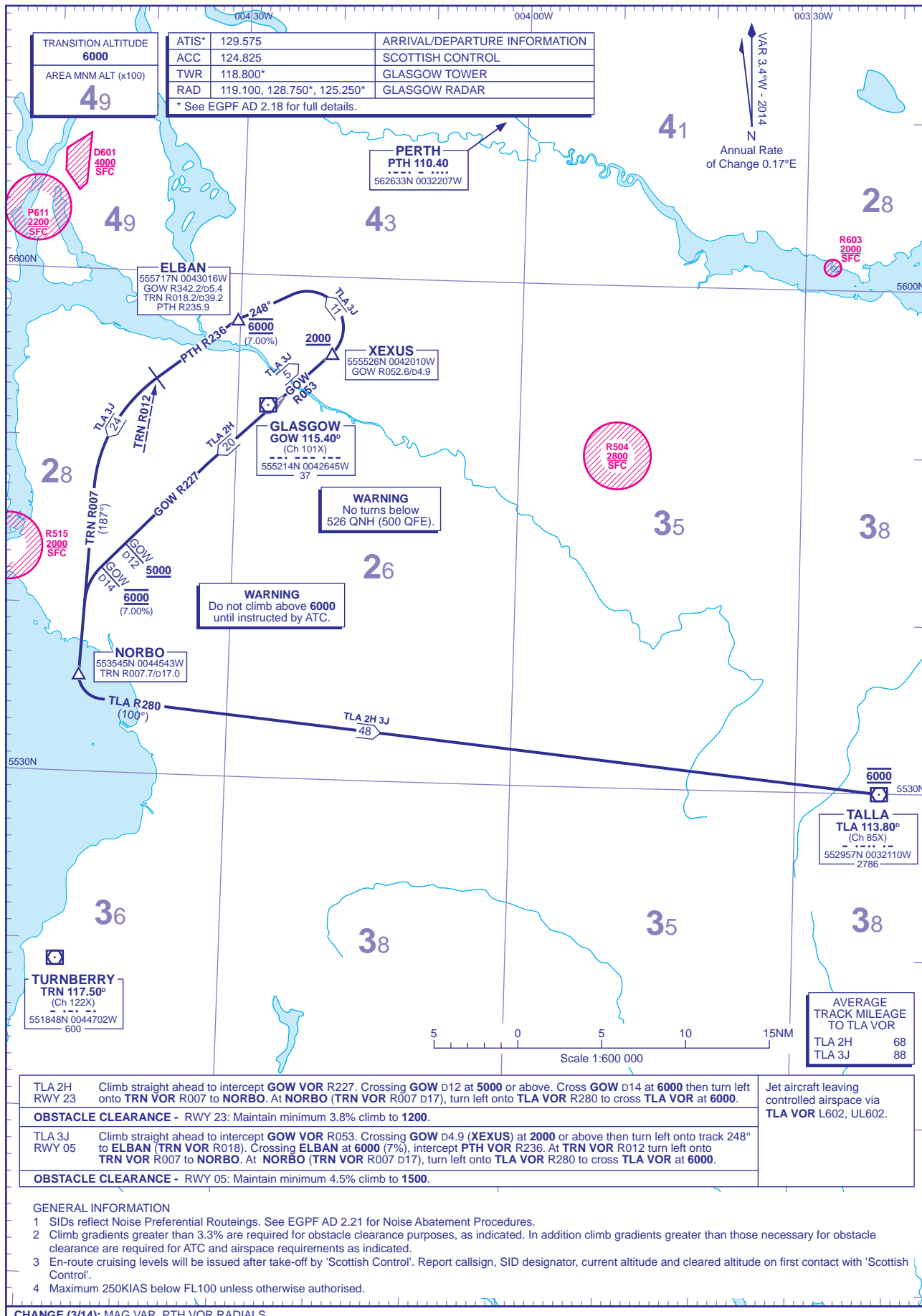


STANDARD DEPARTURE CHART - INSTRUMENT (SID) - ICAO

DISTANCES IN NAUTICAL MILES
BEARINGS, TRACKS AND RADIALS ARE MAGNETIC
ALTITUDES AND ELEVATIONS ARE IN FEET

GLASGOW TALLA (Jet aircraft only)



TLA 2H RWY 23	Climb straight ahead to intercept GOW VOR R227 . Crossing GOW D12 at 5000 or above. Cross GOW D14 at 6000 then turn left onto TRN VOR R007 to NORBO . At NORBO (TRN VOR R007 D17), turn left onto TLA VOR R280 to cross TLA VOR at 6000 .	Jet aircraft leaving controlled airspace via TLA VOR L602, UL602 .
OBSTACLE CLEARANCE - RWY 23: Maintain minimum 3.8% climb to 1200 .		
TLA 3J RWY 05	Climb straight ahead to intercept GOW VOR R053 . Crossing GOW D4.9 (XEXUS) at 2000 or above then turn left onto track 248° to ELBAN (TRN VOR R018). Crossing ELBAN at 6000 (7%), intercept PTH VOR R236 . At TRN VOR R012 turn left onto TRN VOR R007 to NORBO . At NORBO (TRN VOR R007 D17), turn left onto TLA VOR R280 to cross TLA VOR at 6000 .	
OBSTACLE CLEARANCE - RWY 05: Maintain minimum 4.5% climb to 1500 .		

GENERAL INFORMATION

- SIDs reflect Noise Preferential Routings. See EGPF AD 2.21 for Noise Abatement Procedures.
- Climb gradients greater than 3.3% are required for obstacle clearance purposes, as indicated. In addition climb gradients greater than those necessary for obstacle clearance are required for ATC and airspace requirements as indicated.
- En-route cruising levels will be issued after take-off by 'Scottish Control'. Report callsign, SID designator, current altitude and cleared altitude on first contact with 'Scottish Control'.
- Maximum 250KIAS below FL100 unless otherwise authorised.

CHANGE (3/14): MAG VAR. PTH VOR RADIALS.