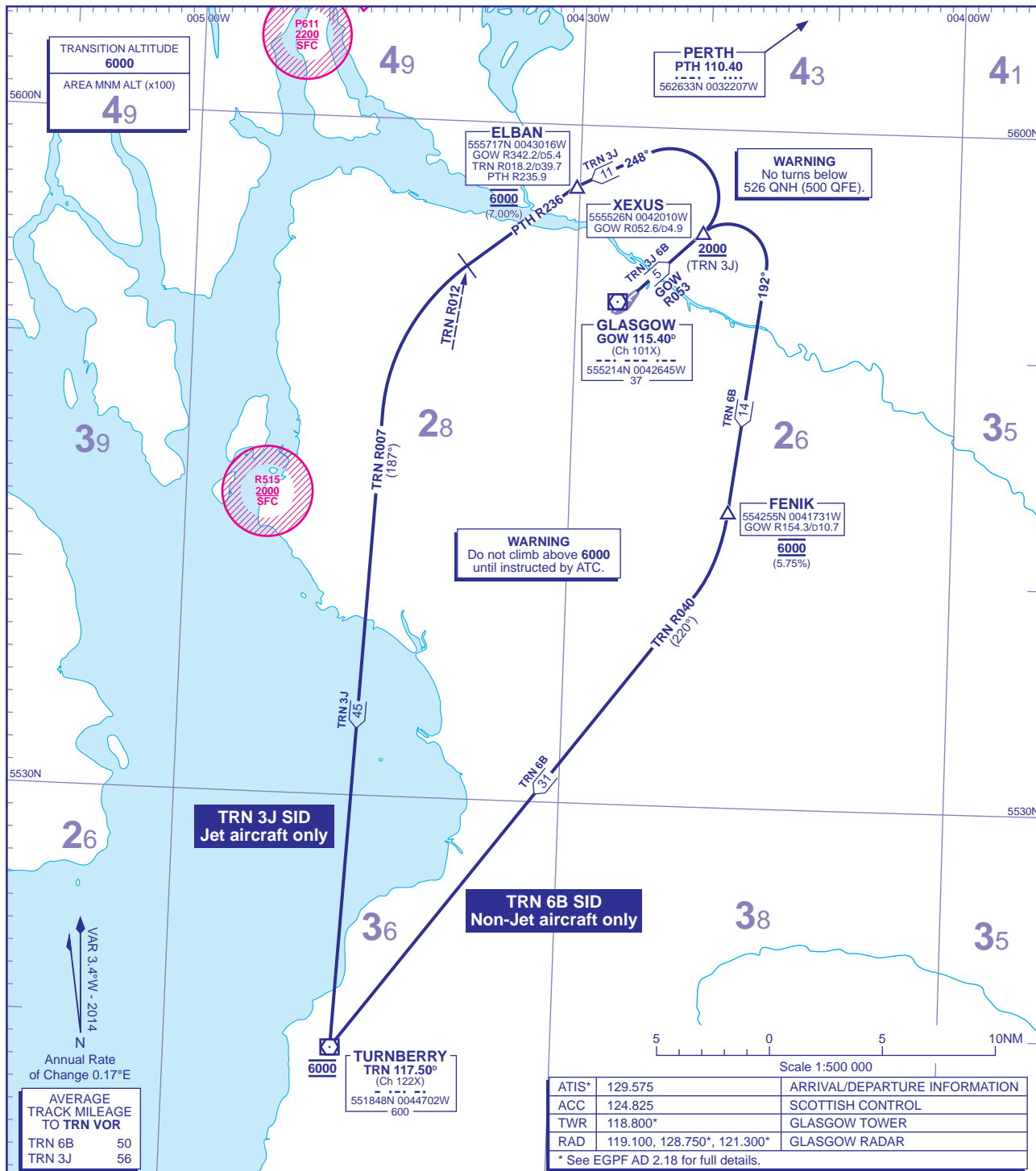


**STANDARD DEPARTURE CHART - INSTRUMENT (SID) - ICAO**

DISTANCES IN NAUTICAL MILES  
BEARINGS, TRACKS AND RADIALS ARE MAGNETIC  
ALTITUDES AND ELEVATIONS ARE IN FEET

**GLASGOW TURNBERRY RWY 05**



TRN 6B RWY 05 Non-Jet ACFT only	Climb straight ahead to intercept GOW VOR R053. At GOW d4.9 (XEXUS) turn right onto track 192° to FENIK, crossing FENIK at 6000 (5.75%), to intercept TRN VOR R040 to TRN VOR at 6000.	P600 westbound, OAC Routes via 53N & 54N.
<b>OBSTACLE CLEARANCE - Maintain minimum 4.5% climb to 300.</b>		
TRN 3J RWY 05 Jet ACFT only	Climb straight ahead to intercept GOW VOR R053. Crossing GOW d4.9 (XEXUS) at 2000 or above, then turn left onto track 248° to ELBAN (TRN VOR R018), crossing ELBAN at 6000 (7%), to intercept PTH VOR R236. At TRN VOR R012 turn left onto TRN VOR R007 to TRN VOR at 6000.	P600 westbound, OAC Routes via 53N & 54N.
<b>OBSTACLE CLEARANCE - Maintain minimum 4.5% climb to 1500.</b>		

- GENERAL INFORMATION**
- SIDs reflect Noise Preferential Routings. See EGPF AD 2.21 for Noise Abatement Procedures.
  - Climb gradients greater than 3.3% are required for obstacle clearance purposes, as indicated. In addition climb gradients greater than those necessary for obstacle clearance are required for ATC and airspace requirements as indicated.
  - En-route cruising levels will be issued after take-off by 'Scottish Control'. Report callsign, SID designator, current altitude and cleared altitude on first contact with 'Scottish Control'.
  - Maximum 250KIAS below FL100 unless otherwise authorised.

**CHANGE (3/14): MAG VAR. PTH VOR RADIALS.**

AERO INFO DATE 3 DEC 13