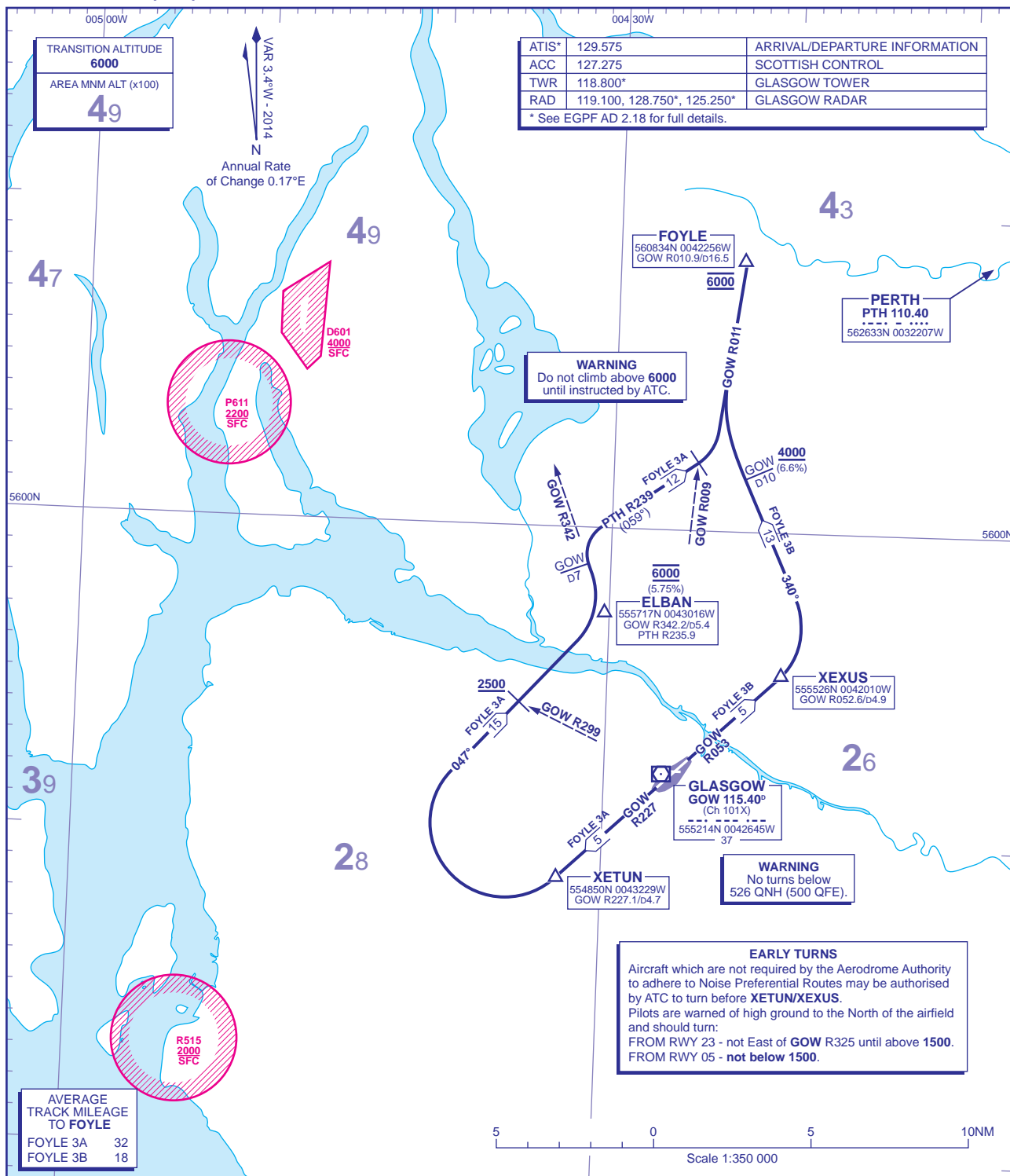


**STANDARD DEPARTURE CHART - INSTRUMENT (SID) - ICAO**

DISTANCES IN NAUTICAL MILES  
BEARINGS, TRACKS AND RADIALS ARE MAGNETIC  
ALTITUDES AND ELEVATIONS ARE IN FEET

**GLASGOW FOYLE**



FOYLE 3A RWY 23	Climb straight ahead to intercept GOW VOR R227. At GOW D4.7 (XETUN) turn right onto track 047° towards ELBAN, crossing GOW VOR R299 at 2500 or above. Cross ELBAN at 6000 (5.75%), intercepting GOW VOR R342. At GOW D7 turn right onto PTH VOR R239. At GOW VOR R009 turn left onto GOW VOR R011 to FOYLE at 6000.	N560D.
<b>OBSTACLE CLEARANCE - RWY 23:</b>	Maintain minimum 3.8% climb to 2100.	
FOYLE 3B RWY 05	Climb straight ahead to intercept GOW VOR R053. At GOW D4.9 (XEXUS) turn left onto track 340°, crossing GOW D10 at 4000 or above (6.6%), to intercept GOW VOR R011 to FOYLE at 6000.	N560D.
<b>OBSTACLE CLEARANCE - RWY 05:</b>	Maintain minimum 4.5% climb to 1500.	

**GENERAL INFORMATION**

- SIDs reflect Noise Preferential Routings. See EGPF AD 2.21 for Noise Abatement Procedures.
- Climb gradients greater than 3.3% are required for obstacle clearance purposes, as indicated. In addition climb gradients greater than those necessary for obstacle clearance are required for ATC and airspace requirements as indicated.
- En-route cruising levels will be issued after take-off by 'Scottish Control'. Report callsign, SID designator, current altitude and cleared altitude on first contact with 'Scottish Control'.
- Maximum 250KIAS below FL100 unless otherwise authorised.

**CHANGE (3/14):** MAG VAR. PTH VOR RADIALS.

AERO INFO DATE 3 DEC 13