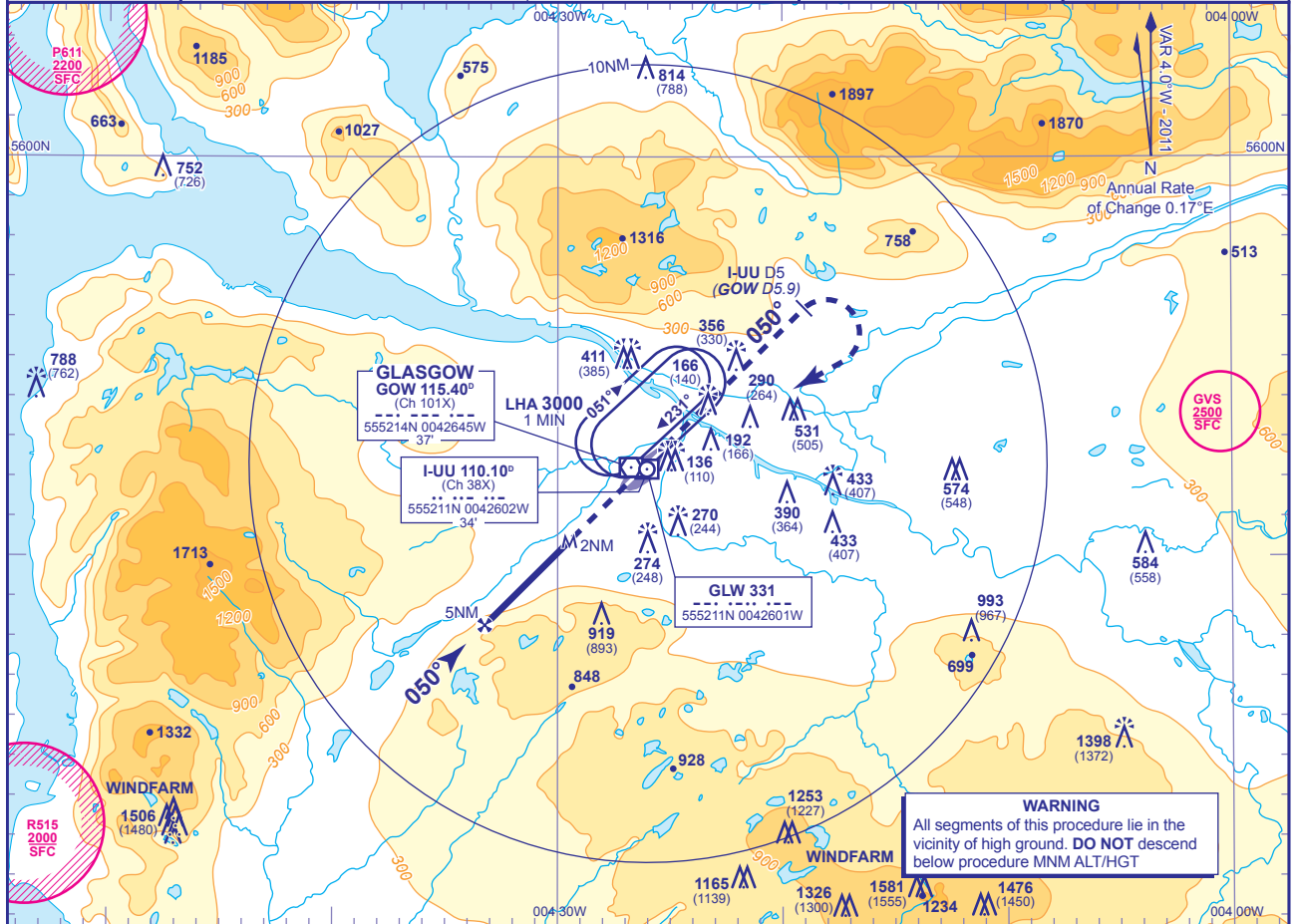


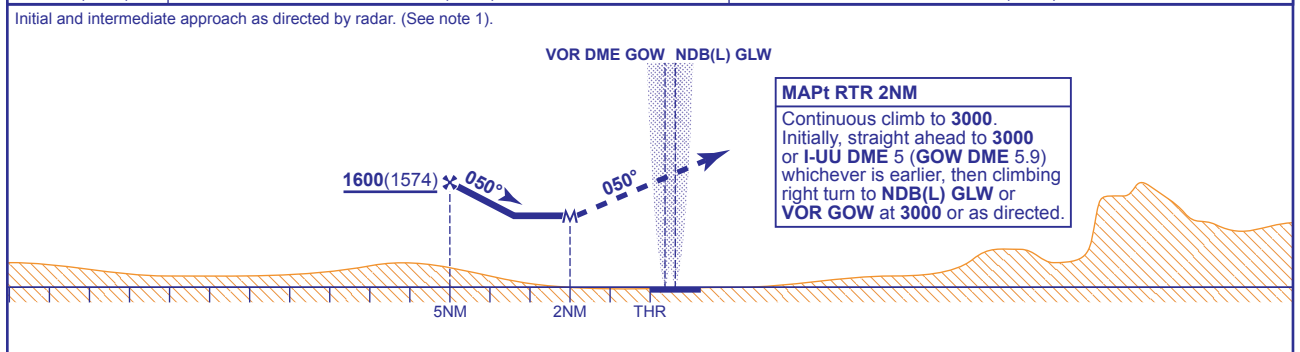
INSTRUMENT APPROACH CHART - ICAO

GLASGOW
SRA RTR 2NM
RWY 05
 (ACFT CAT A,B,C,D)

MSA 	APP 119.100	GLASGOW APPROACH	AD ELEVATION 26
	TWR 118.800	GLASGOW TOWER	THR ELEVATION 26
	121.700	GLASGOW GROUND	OBSTACLE ELEVATIONS
	RAD 119.100, 125.250, 128.750	GLASGOW RADAR	814 AMSL (788) (ABOVE THR)
	ATIS 129.575	GLASGOW INFORMATION	BEARINGS ARE MAGNETIC
NDB(L) GLW or VOR GOW			TRANSITION ALTITUDE 6000



RADAR ADVISORY HEIGHTS Gradient 5.19%, 315FT/NM			
NM	5.0	4.0	
ALT(HGT)	1600(1574)	1290(1264)	



Aircraft Category	A	B	C	D	Rate of descent	G/S KT	160	140	120	100	80
OCA (OCH) Procedure	1080(1054)	1080(1054)	1080(1054)	1080(1054)		FT/MIN	840	740	630	530	420
VM(C)OCA (OCH AAL) Total Area	1080(1054)	1080(1054)	1400(1374)	1700(1674)							

NOTE 1 Minimum descent in the intermediate approach area until with 7NM radar range to touchdown is 2000.
NOTE 2 Position overhead holding fixes according to inbound routing as cleared by ATC. The normal cleared altitude at the respective terminal fix is 7000. As this altitude is above the Transition Level, aircraft will be instructed to fly the appropriate flight level.
NOTE 3 Aircraft unable to receive DME advise ATC. Radar range will be provided (if required) at 5NM in the missed approach.

CHANGE: COM. MAG VAR.

AERO INFO DATE 4 NOV 10