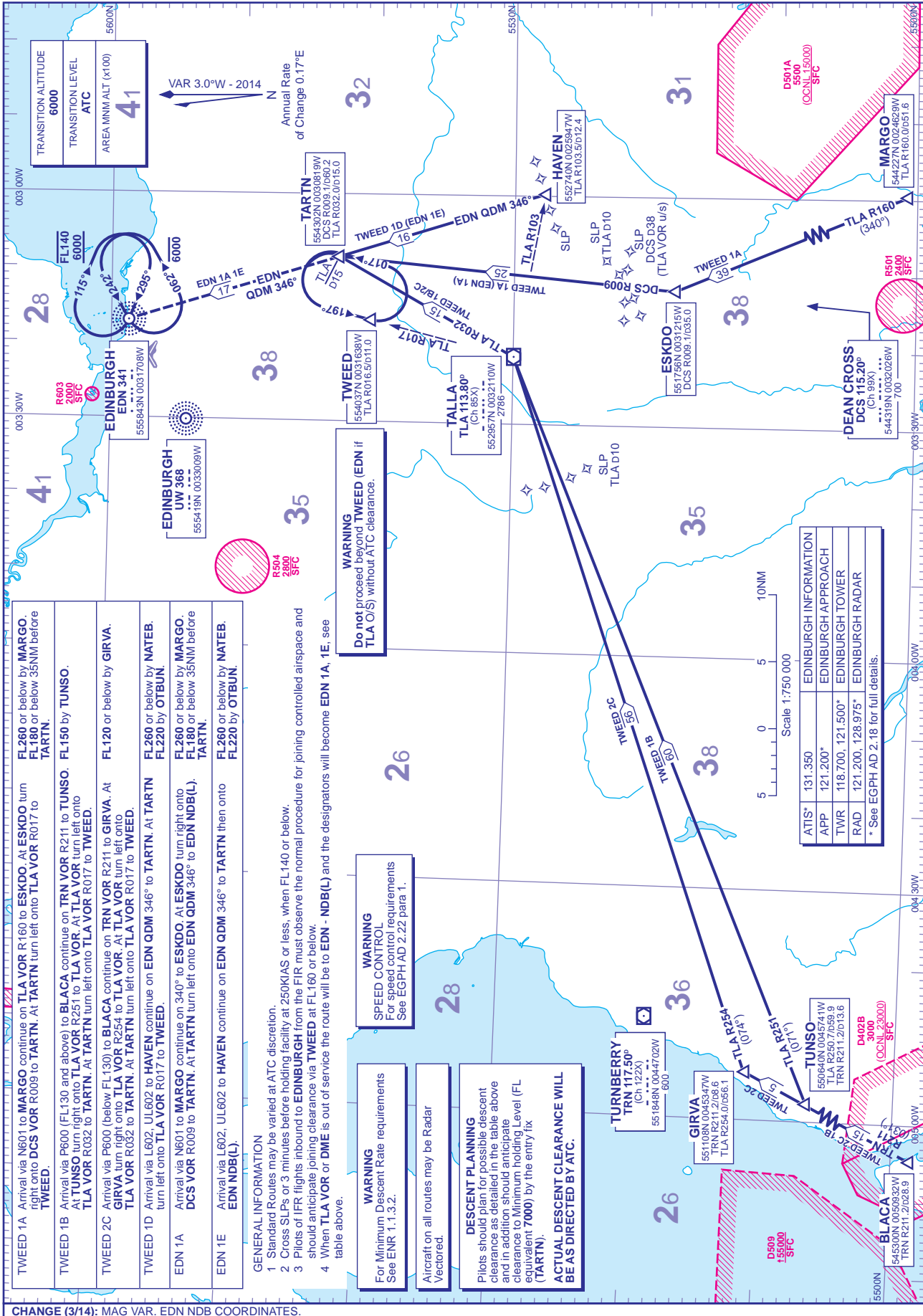


STANDARD ARRIVAL CHART - INSTRUMENT (STAR) - ICAO

DISTANCES IN NAUTICAL MILES
BEARINGS, TRACKS AND RADIALS ARE MAGNETIC
ALTITUDES AND ELEVATIONS ARE IN FEET

EDINBURGH via TWEED



TWEED 1A Arrival via N601 to MARGO continue on TLA VOR R160 to ESKDO. At ESKDO turn right onto DCS VOR R009 to TARTN. At TARTN turn left onto TLA VOR R017 to TWEED.	FL260 or below by MARGO. FL180 or below 35NM before TARTN.
TWEED 1B Arrival via P600 (FL130 and above) to BLACA continue on TRN VOR R211 to TUNSO. FL150 by TUNSO. At TUNSO turn right onto TLA VOR R251 to TLA VOR. At TLA VOR turn left onto TLA VOR R032 to TARTN. At TARTN turn left onto TLA VOR R017 to TWEED.	FL260 or below by MARGO. FL180 or below 35NM before TARTN.
TWEED 2C Arrival via P600 (below FL130) to BLACA continue on TRN VOR R211 to GIRVA. At GIRVA turn right onto TLA VOR R254 to TLA VOR. At TLA VOR turn left onto TLA VOR R032 to TARTN. At TARTN turn left onto TLA VOR R017 to TWEED.	FL260 or below by NATEB. FL220 by OTBUN.
TWEED 1D Arrival via L602, UL602 to HAVEN continue on EDN QDM 346° to TARTN. At TARTN turn left onto TLA VOR R017 to TWEED.	FL260 or below by MARGO. FL180 or below 35NM before TARTN.
EDN 1A Arrival via N601 to MARGO continue on 340° to ESKDO. At ESKDO turn right onto DCS VOR R009 to TARTN. At TARTN turn left onto EDN QDM 346° to EDN NDB(L).	FL260 or below by NATEB. FL220 by OTBUN.
EDN 1E Arrival via L602, UL602 to HAVEN continue on EDN QDM 346° to TARTN then onto EDN NDB(L).	

GENERAL INFORMATION

- Standard Routes may be varied at ATC discretion.
- Cross SLPs or 3 minutes before holding facility at 250KIAS or less, when FL140 or below.
- Pilots of IFR flights inbound to EDINBURGH from the FIR must observe the normal procedure for joining controlled airspace and should anticipate joining clearance via TWEED at FL160 or below.
- When TLA VOR or DME is out of service the route will be to EDN - NDB(L) and the designators will become EDN 1A, 1E, see table above.

WARNING
For Minimum Descent Rate requirements See ENR 1.1.3.2.

Aircraft on all routes may be Radar Vectored.

DESCENT PLANNING
Pilots should plan for possible descent clearance as detailed in the table above and in addition should anticipate clearance to Minimum Holding Level (FL equivalent 7000) by the entry fix (TARTN).
ACTUAL DESCENT CLEARANCE WILL BE AS DIRECTED BY ATC.

WARNING
Do not proceed beyond TWEED (EDN if TLA O/S) without ATC clearance.

EDINBURGH INFORMATION

ATIS*	131.350	EDINBURGH INFORMATION
APP	121.200*	EDINBURGH APPROACH
TWR	118.700, 121.500*	EDINBURGH TOWER
RAD	121.200, 128.975*	EDINBURGH RADAR

* See EGPH AD 2.18 for full details.

CHANGE (3/14): MAG VAR, EDN NDB COORDINATES.

AERO INFO DATE 4 DEC 13