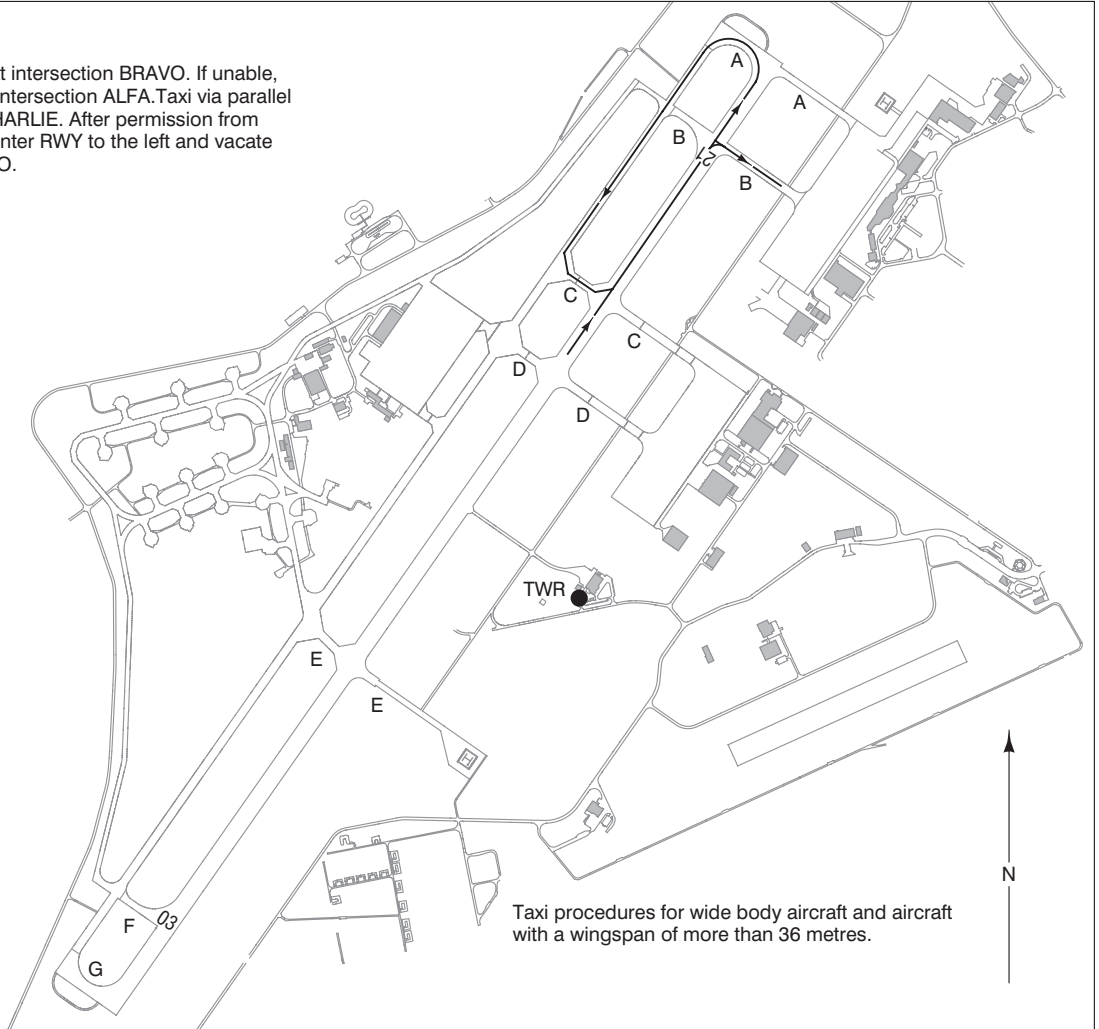


LANDING

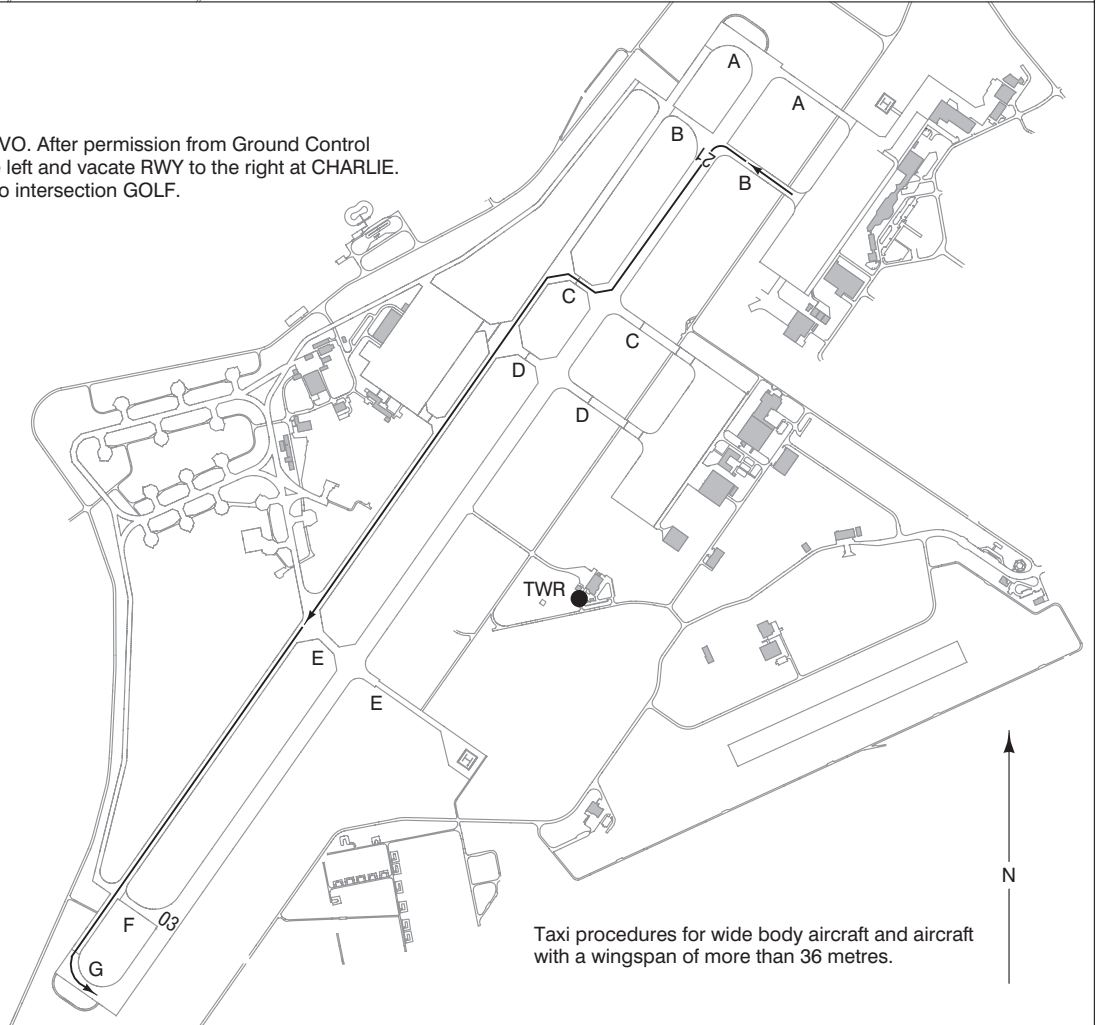
Vacate RWY to the right at intersection BRAVO. If unable, vacate RWY to the left at intersection ALFA. Taxi via parallel taxiway to intersection CHARLIE. After permission from Ground Control or TWR enter RWY to the left and vacate RWY to the right at BRAVO.



Taxi procedures for wide body aircraft and aircraft with a wingspan of more than 36 metres.

DEPARTURE

Taxi via intersection BRAVO. After permission from Ground Control or TWR enter RWY to the left and vacate RWY to the right at CHARLIE. Taxi via parallel taxiway to intersection GOLF.



Taxi procedures for wide body aircraft and aircraft with a wingspan of more than 36 metres.

CHANGE: RWY Designator.