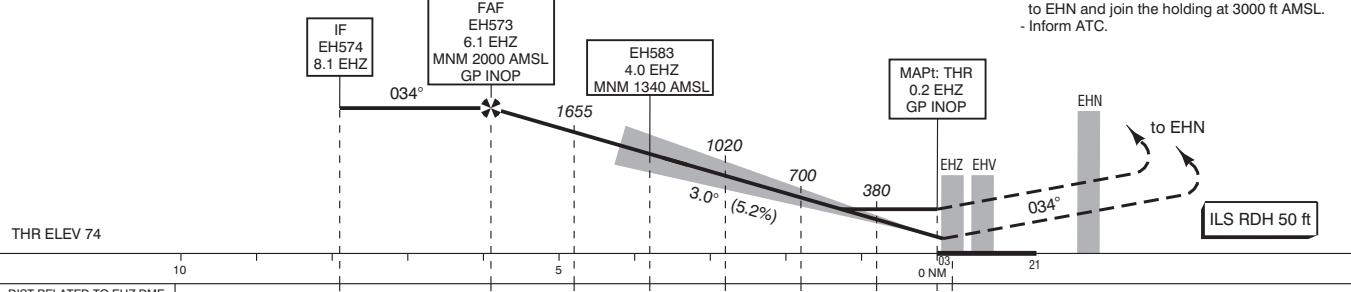


TRANSITION LEVEL BY ATC  
TRANSITION ALTITUDE 3000 ft AMSL

DO NOT DESCEND BELOW THE DESCENT PROFILE

Missed Approach:  
- Climb to 2000 ft AMSL on track 034° MAG.  
- At 4.0 EHV / EH550 start a climbing left turn to EHN and join the holding at 3000 ft AMSL.  
- Inform ATC.



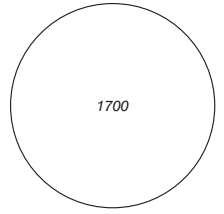
DIST RELATED TO EHZ DME	8.1	6.1	5	4.0	3	2	1	0.2	0 NM	21
GS IN KT	60	80	100	120	140	160	180			
VERTICAL SPEED	320 ft/min	425 ft/min	530 ft/min	635 ft/min	745 ft/min	850 ft/min	955 ft/min			

OCA (OCH) ELEV THR 03: 73.3 ft

ACFT CAT	CAT I	GP INOP MAP: THR	CIRCLING
A	239 (165)	420 (346)	NOT ALLOWED
B	249 (175)		
C	259 (185)		
D	269 (195)		

THR 03	51°26'27"N	005°21'51"E
EH550	51°30'12"N	005°26'04"E
EH573	51°21'38"N	005°16'27"E
EH574	51°19'59"N	005°14'38"E
EH583	51°23'20"N	005°18'22"E

MSA BASED ON EHN NDB



CEILING AND VISIBILITY MINIMA			
TAKE-OFF	DAY:	NA	NIGHT: NA
LANDING	DAY:	NA	NIGHT: NA

BEARINGS ARE MAGNETIC  
DISTANCES IN NM  
ALTITUDES AND ELEVATIONS  
IN FEET