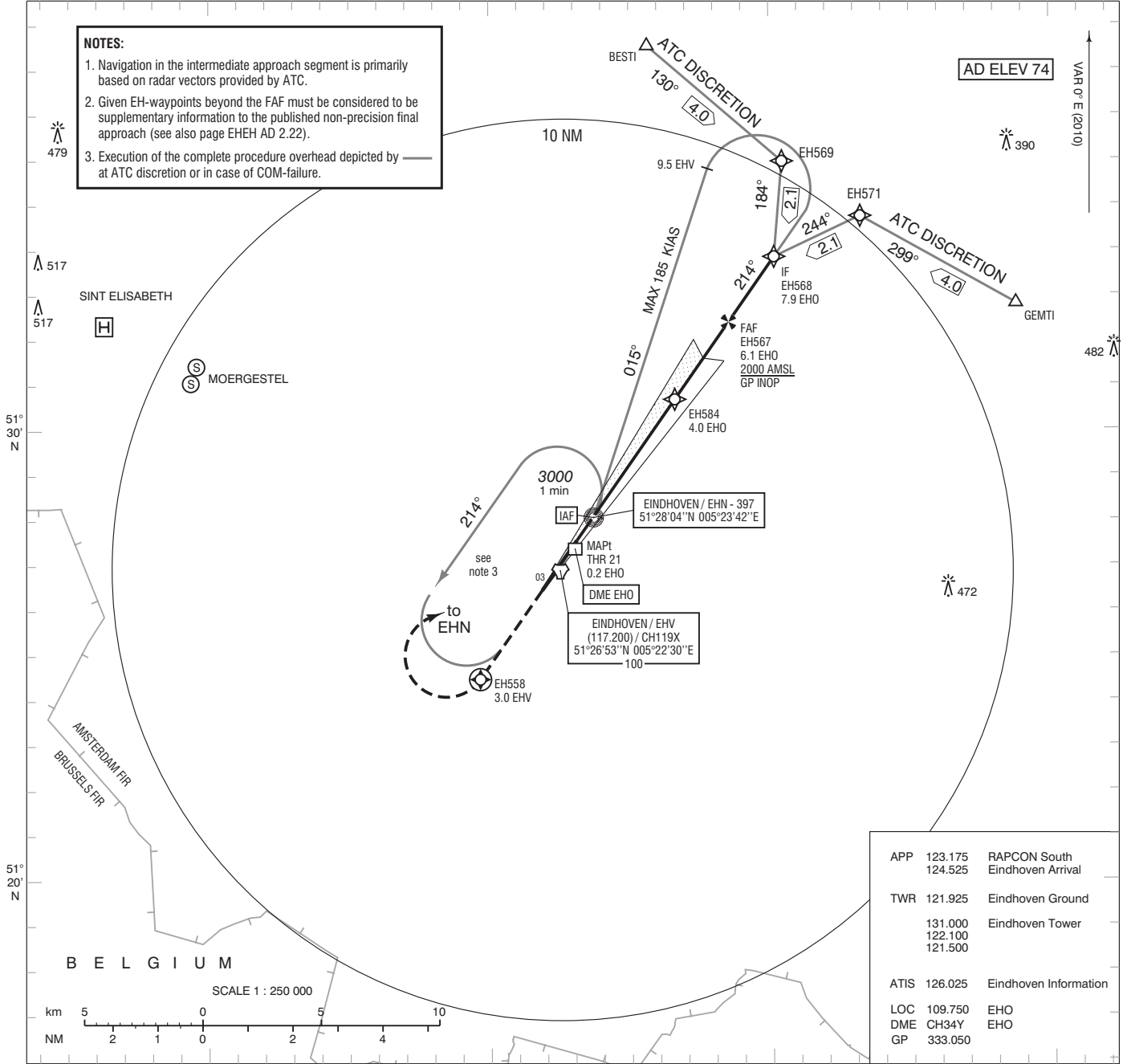


NOTES:

1. Navigation in the intermediate approach segment is primarily based on radar vectors provided by ATC.
2. Given EH-waypoints beyond the FAF must be considered to be supplementary information to the published non-precision final approach (see also page EHEH AD 2.22).
3. Execution of the complete procedure overhead depicted by _____ at ATC discretion or in case of COM-failure.



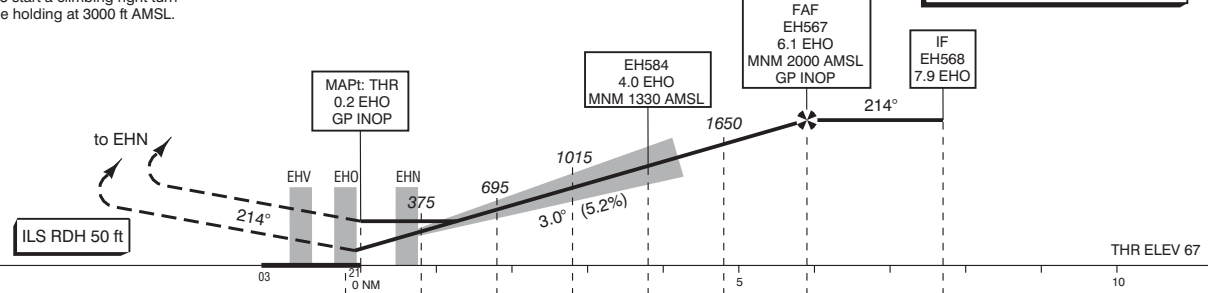
APP	123.175	RAPCON South
	124.525	Eindhoven Arrival
TWR	121.925	Eindhoven Ground
	131.000	Eindhoven Tower
	122.100	
	121.500	
ATIS	126.025	Eindhoven Information
LOC	109.750	EHO
DME	CH34Y	EHO
GP	333.050	

Missed Approach:

- Climb to 2000 ft AMSL on track 214° MAG.
- At 3.0 EHV / EH558 start a climbing right turn to EHN and join the holding at 3000 ft AMSL.
- Inform ATC.

DO NOT DESCEND BELOW THE DESCENT PROFILE

TRANSITION LEVEL BY ATC
TRANSITION ALTITUDE 3000 ft AMSL



DIST RELATED TO EHO DME	0.2	1	2	3	4.0	5	6.1	7.9
GS IN KT	60	80	100	120	140	160	180	
VERTICAL SPEED	320 ft/min	425 ft/min	530 ft/min	635 ft/min	745 ft/min	850 ft/min	955 ft/min	

OCA (OCH) ELEV THR 21: 66.6 ft				MSA BASED ON EHN NDB	
ACFT CAT	CAT I	GP INOP MAPt: THR	CIRCLING	THR 21	51°27'34"N 005°23'05"E
A	227 (160)	500 (433)	NOT ALLOWED	EH558	51°24'29"N 005°19'39"E
B	236 (169)			EH567	51°32'24"N 005°28'32"E
C	246 (179)			EH568	51°33'51"N 005°30'10"E
D	256 (189)			EH569	51°35'58"N 005°30'27"E
				EH571	51°34'45"N 005°33'14"E
				EH584	51°30'41"N 005°26'36"E
CEILING AND VISIBILITY MINIMA				BEARINGS ARE MAGNETIC	
TAKE-OFF	DAY: NA	NIGHT: NA	DISTANCES IN NM		
LANDING	DAY: NA	NIGHT: NA	ALTITUDES AND ELEVATIONS IN FEET		