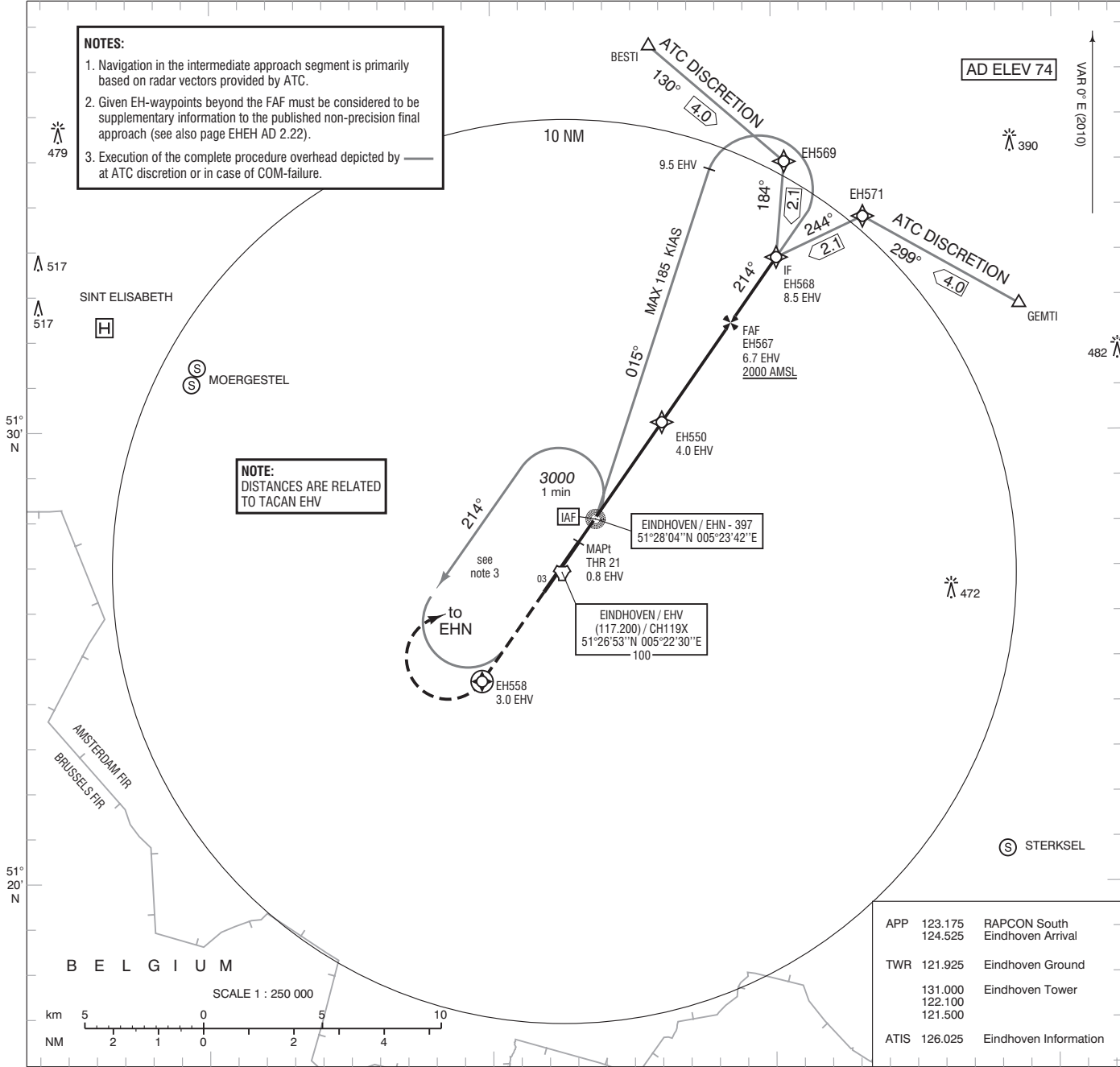


NOTES:

1. Navigation in the intermediate approach segment is primarily based on radar vectors provided by ATC.
2. Given EH-waypoints beyond the FAF must be considered to be supplementary information to the published non-precision final approach (see also page EHEH AD 2.22).
3. Execution of the complete procedure overhead depicted by at ATC discretion or in case of COM-failure.

NOTE:
DISTANCES ARE RELATED TO TACAN EHV



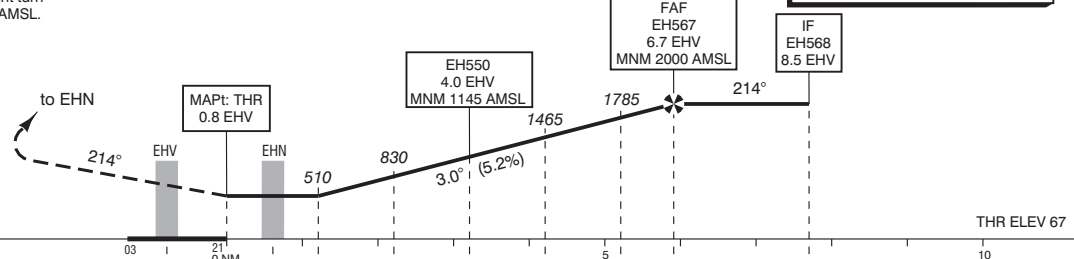
APP	123.175	RAPCON South
	124.525	Eindhoven Arrival
TWR	121.925	Eindhoven Ground
	131.000	Eindhoven Tower
	122.100	
	121.500	
ATIS	126.025	Eindhoven Information

Missed Approach:

- Climb to 2000 ft AMSL on track 214° MAG.
- At 3.0 EHV / EH558 start a climbing right turn to EHN and join the holding at 3000 ft AMSL.
- Inform ATC.

DO NOT DESCEND BELOW THE DESCENT PROFILE

**TRANSITION LEVEL BY ATC
TRANSITION ALTITUDE 3000 ft AMSL**

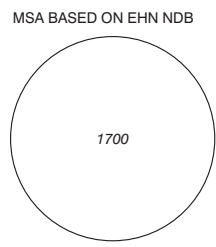


DIST RELATED TO EHV TACAN

	60		80		100		120		140		160		180		
	min-sec	ft/min	min-sec	ft/min	min-sec	ft/min	min-sec	ft/min	min-sec	ft/min	min-sec	ft/min	min-sec	ft/min	
FAF-EHN:	5.3 NM	5-17	320	3-58	425	3-10	530	2-38	635	2-16	745	1-59	850	1-46	955
EHN-MAPt (THR):	0.6 NM	0-38		0-28		0-23		0-19		0-16		0-14		0-13	

OCA (OCH) ELEV THR 21: 66.6 ft

ACFT CAT	NDB / DME MAPt: THR	CIRCLING	THR 21	51°27'34"N	005°23'05"E
A	500 (433)	NOT ALLOWED	EH558	51°24'29"N	005°19'39"E
B			EH567	51°32'24"N	005°28'32"E
C			EH568	51°33'51"N	005°30'10"E
D			EH569	51°35'58"N	005°30'27"E
			EH571	51°34'45"N	005°33'14"E



CEILING AND VISIBILITY MINIMA				BEARINGS ARE MAGNETIC DISTANCES IN NM ALTITUDES AND ELEVATIONS IN FEET	
TAKE-OFF	DAY:	NA	NIGHT:	NA	
LANDING	DAY:		NIGHT:		

CHANGE: RWY designator; tracks; OCA (OCH), MSA, editorial.