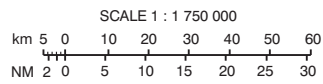
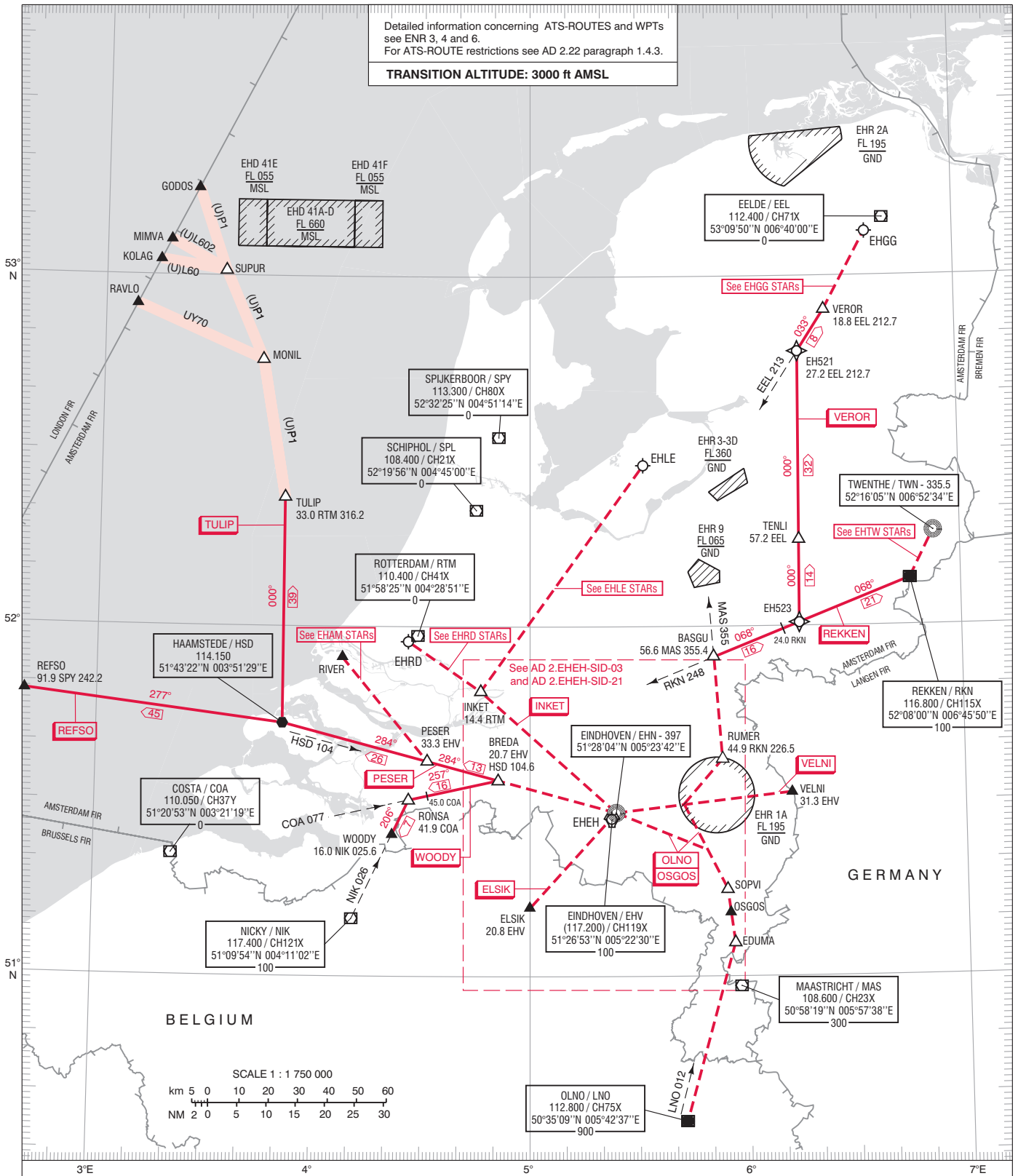


Detailed information concerning ATS-ROUTES and WPTs see ENR 3, 4 and 6.
For ATS-ROUTE restrictions see AD 2.22 paragraph 1.4.3.
TRANSITION ALTITUDE: 3000 ft AMSL



AVERAGE VAR 0°E (2010)
DISTANCES IN NM
ALTITUDES IN FEET
DIRECTIONS ARE MAGNETIC

23.1 SPY 304.2
DME SPY 23.1 NM
VOR SPY RADIAL 304.2

--- SID ROUTE AS DESCRIBED
--- SID ROUTE
--- ATS ROUTE

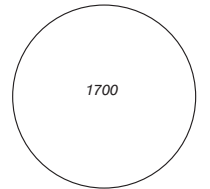
NOTES:

1. In general turn anticipation is mandatory.
2. Below FL 100: MAX speed 250 KIAS.
3. EH-waypoints:
 - a. The purpose of the so-called EH-points is to define unnamed intersections, turning points, positions and so on and to establish tracks in between.
 - b. EH-waypoints must be considered as an aid for database coding only.
 - c. EH-waypoints shall not be used in RTF procedures.

EH521 52°47'02"N 006°15'24"E
EH523 52°00'34"N 006°14'50"E

TWR	131.000	Eindhoven Tower
APP	123.175	Rapcon South
ACC	128.350	Dutch MIL
	132.350	Dutch MIL Info
ATIS	126.025	Eindhoven Information
	121.500	General Emergency

MSA BASED ON EHN NDB



CHANGE: MSA, tracks, editorial