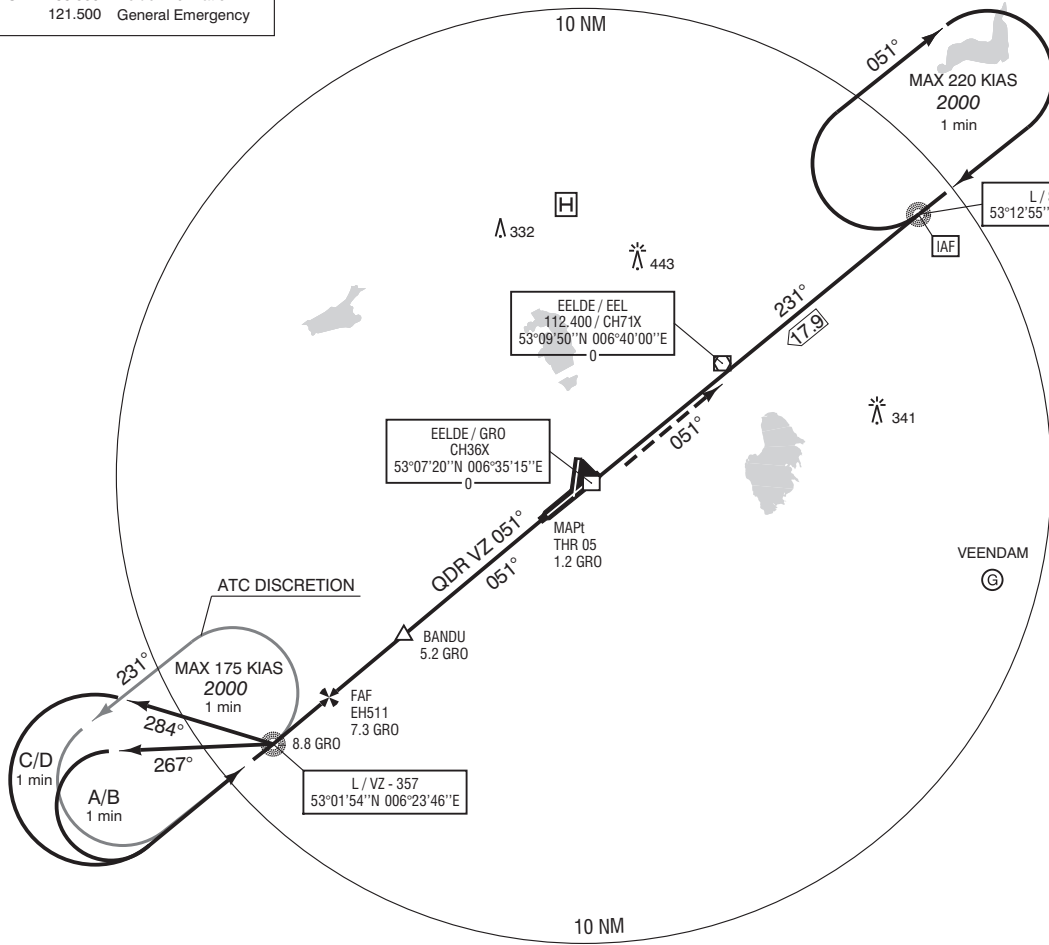


53° 20' N
53° 10'
53° 00' N

APP (TAR)	120.300	Eelde Approach
TWR	118.700	Eelde Tower
	119.700	
ATIS	133.550	Eelde Information
	121.500	General Emergency

AD ELEV 18

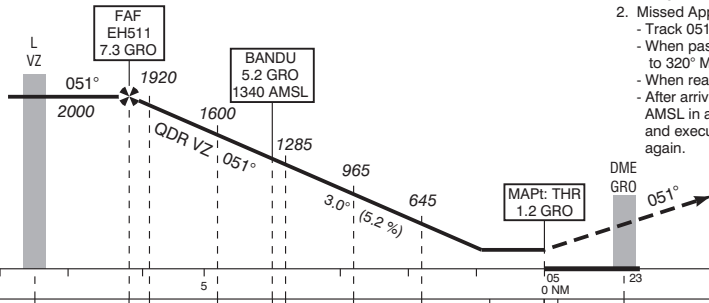
VAR 1° E (2010)
 397
 397
 397
 397



TRANSITION LEVEL BY ATC
 TRANSITION ALTITUDE 3000 ft AMSL

DO NOT DESCEND BELOW THE DESCENT PROFILE

- Missed Approach:
 - Track 051° MAG and climb to 2000 ft AMSL. Inform ATC.
- Missed Approach in case of communication failure:
 - Track 051° MAG and climb to 3000 ft AMSL;
 - When passing 2000 ft AMSL start a left turn to 320° MAG;
 - When reaching 3000 ft AMSL proceed to VZ;
 - After arriving over VZ hold or descend to 2000 ft AMSL in an outbound turn, intercept final approach and execute the instrument approach procedure again.



THR ELEV 13

DIST RELATED TO GRO DME

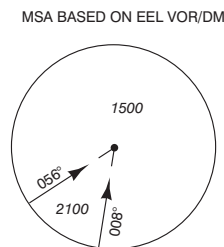
GS IN KT	60	80	100	120	140	160	180
VERTICAL SPEED	320 ft/min	425 ft/min	530 ft/min	635 ft/min	745 ft/min	850 ft/min	955 ft/min

OCA (OCH) ELEV THR 05: 13.3 ft

ACFT CAT	NDB MAPt: THR	CIRCLING*
A	440 (420)	450 (430)
B		520 (500)
C		620 (600)
D		840 (830)

* Circling approaches shall be executed south-east of the AD, unless otherwise instructed by ATC.

THR 05 53°06'40"N 006°33'39"E
 EH511 53°02'52"N 006°25'47"E



CEILING AND VISIBILITY MINIMA			
TAKE-OFF	DAY:	NA	NIGHT:
LANDING	DAY:	NA	NIGHT:

BEARINGS ARE MAGNETIC DISTANCES IN NM ALTITUDES AND ELEVATIONS IN FEET

CHANGE: APCH PROC amended due to RWY extension, editorial.