

**NOTES:**

1. Continuous descent operation.
2. GNSS required.
3. ILS / DME must be available.
4. DME GRO reads 0.2 at THR 23.
5. Given EH waypoints beyond the FAP must be considered to be supplementary information.

**Altitudes / Speeds:**  
When cleared for TOLKO 1G approach RWY 23:

- Continue to TOLKO.
- Establish a continuous descent path.
- The minimum altitudes shall be respected.
- The published speeds are mandatory.
- Execute the ILS approach RWY 23.

P-RNAV approval required  
(see EHGG AD 2.22 §2.3.3).

AD ELEV 17

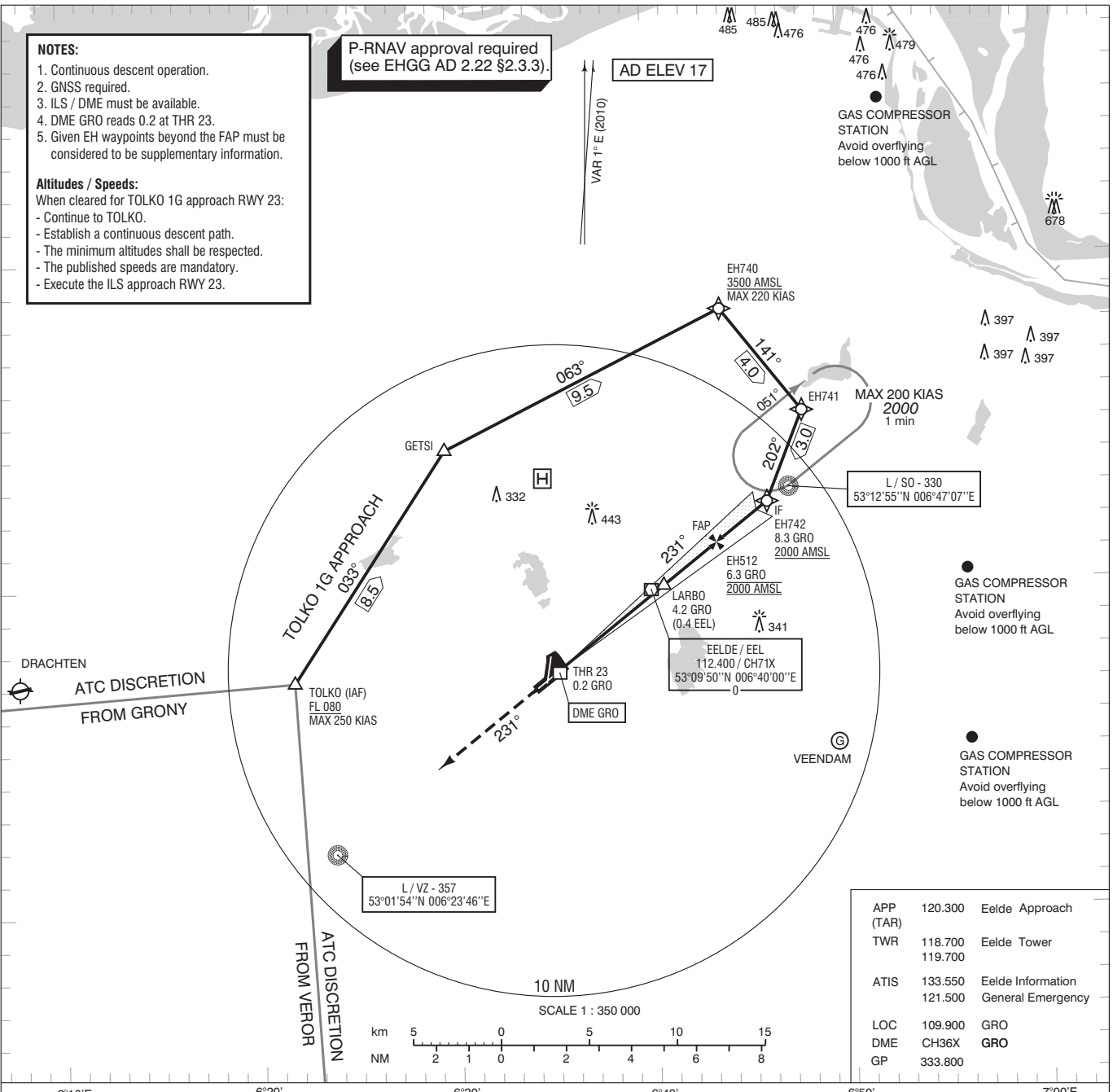
GAS COMPRESSOR STATION  
Avoid overflying below 1000 ft AGL

L / SO - 330  
53°12'55"N 006°47'07"E

L / VZ - 357  
53°01'54"N 006°23'46"E

EELDE / EEL  
112.400 / CH71X  
53°09'50"N 006°40'00"E

APP (TAR)	120.300	Eelde Approach
TWR	118.700	Eelde Tower
	119.700	
ATIS	133.550	Eelde Information
	121.500	General Emergency
LOC	109.900	GRO
DME	CH36X	GRO
GP	333.800	

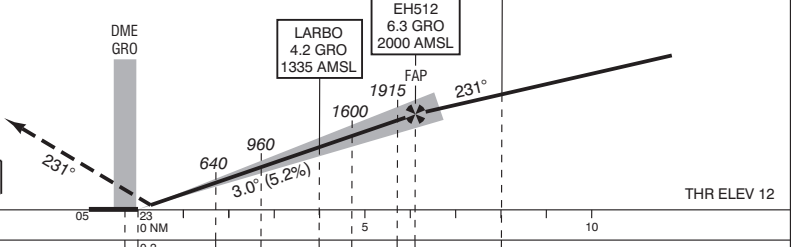


1. Missed approach:
  - Track 231° MAG and climb to 2000 ft AMSL. Inform ATC.
2. Missed approach in case of communication failure:
  - Track 231° MAG and climb to 3000 ft AMSL;
  - When passing 2000 ft AMSL start a right turn to 320° MAG;
  - When reaching 3000 ft AMSL proceed to SO;
  - After arriving over SO hold or descend to 2000 ft AMSL in an outbound turn, intercept final approach and execute the instrument approach procedure again.

TRANSITION LEVEL BY ATC  
TRANSITION ALTITUDE 3000 ft AMSL

IF  
EH742  
8.3 GRO  
MNM 2000 AMSL

ILS RDH 50 ft



DIST RELATED TO DME GRO		0 NM		2		4.2		6.3		8.3	
GS IN KT	60	80	100	120	140	160	180				
VERTICAL SPEED	320 ft/min	425 ft/min	530 ft/min	635 ft/min	745 ft/min	850 ft/min	955 ft/min				
OCA (OCH) ELEV THR 23 : 12.3 ft								MSA BASED ON EEL VOR/DME			
ACFT CAT	CAT I Press Alt	CIRCLING*	* Circling approaches shall be executed south-east of the AD, unless otherwise instructed by ATC.		THR 23 53°07'30"N 006°35'25"E						
A	161 (148)	450 (430)	EH512 53°11'15"N 006°43'23"E								
B	174 (161)	520 (500)	EH740 53°18'24"N 006°43'46"E								
C	184 (171)	620 (600)	EH741 53°15'15"N 006°47'52"E								
D	197 (184)	840 (830)	EH742 53°12'29"N 006°46'00"E								
CEILING AND VISIBILITY MINIMA				BEARINGS ARE MAGNETIC DISTANCES IN NM ALTITUDES AND ELEVATIONS IN FEET							
TAKE-OFF	DAY:	NA	NIGHT:	NA							
LANDING	DAY:	NA		NIGHT:							