

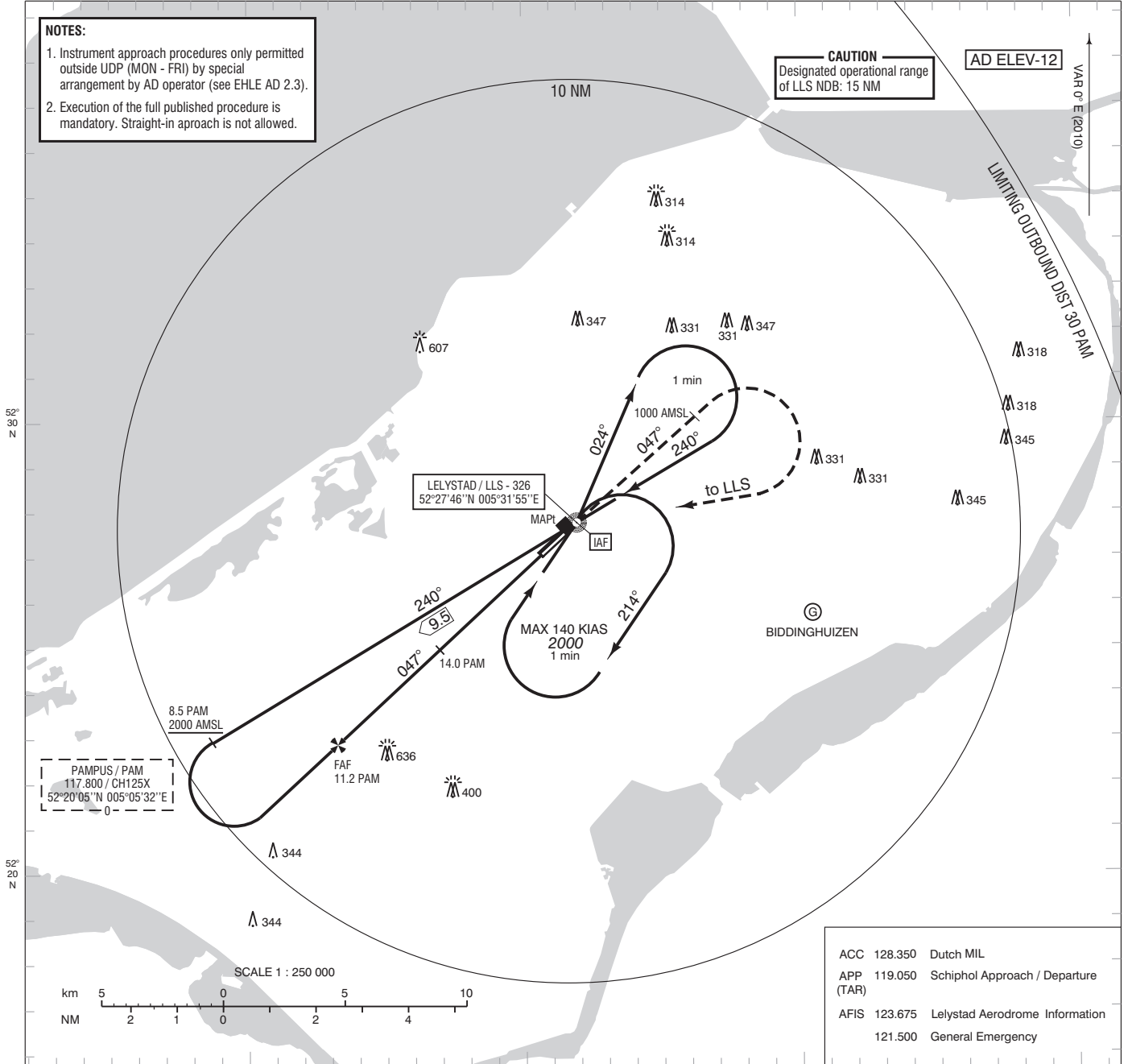
**NOTES:**  
 1. Instrument approach procedures only permitted outside UDP (MON - FRI) by special arrangement by AD operator (see EHLE AD 2.3).  
 2. Execution of the full published procedure is mandatory. Straight-in approach is not allowed.

**CAUTION**  
 Designated operational range of LLS NDB: 15 NM

AD ELEV-12

VAR 0° E (2010)

LIMITING OUTBOUND DIST 30 PAM

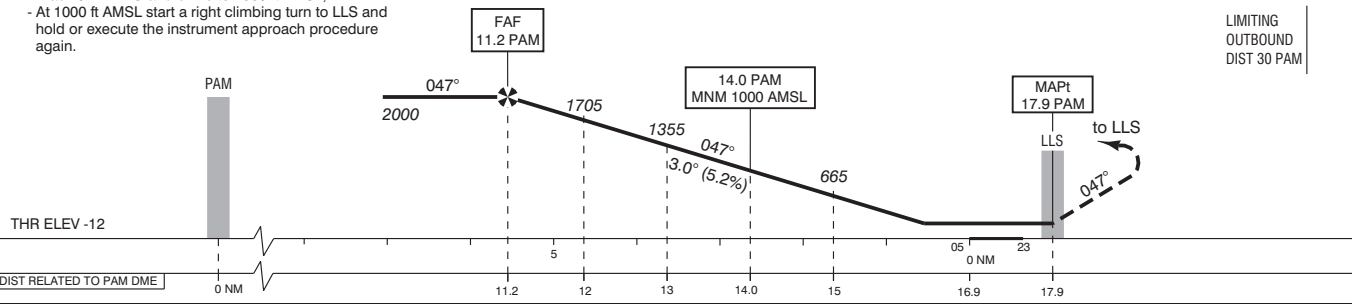


ACC	128.350	Dutch MIL
APP	119.050	Schiphol Approach / Departure (TAR)
AFIS	123.675	Lelystad Aerodrome Information
	121.500	General Emergency

- Missed approach:
  - Track 047° MAG and climb to 2000 ft AMSL;
  - At 1000 ft AMSL start a right climbing turn to LLS;
  - Inform ATC immediately on current channel.
- Missed approach in case of communication failure:
  - Track 047° MAG and climb to 2000 ft AMSL;
  - At 1000 ft AMSL start a right climbing turn to LLS and hold or execute the instrument approach procedure again.

DO NOT DESCEND BELOW THE DESCENT PROFILE

TRANSITION LEVEL BY ATC  
 TRANSITION ALTITUDE 3000 ft AMSL



DIST RELATED TO PAM DME	0 NM	11.2	12	13	14.0	15	16.9	17.9
GS IN KT	60	80	100	120	140	160		
VERTICAL SPEED	320 ft/min	425 ft/min	530 ft/min	635 ft/min	745 ft/min	850 ft/min		

OCA (OCH) ELEV THR 05: -12 ft				MSA BASED ON LLS NDB	
ACFT CAT	NDB / DME MAPt: NDB (LLS)	CIRCLING			
A	310 (320)	NOT ALLOWED			
B		NOT ALLOWED			
C		NOT ALLOWED			
D		NOT ALLOWED			
CEILING AND VISIBILITY MINIMA					
TAKE-OFF	DAY:	NA	NIGHT:	NA	
LANDING	DAY:	NA	NIGHT:	NA	

CHANGE: tracks, new WPT symbols and layout, editorial.