

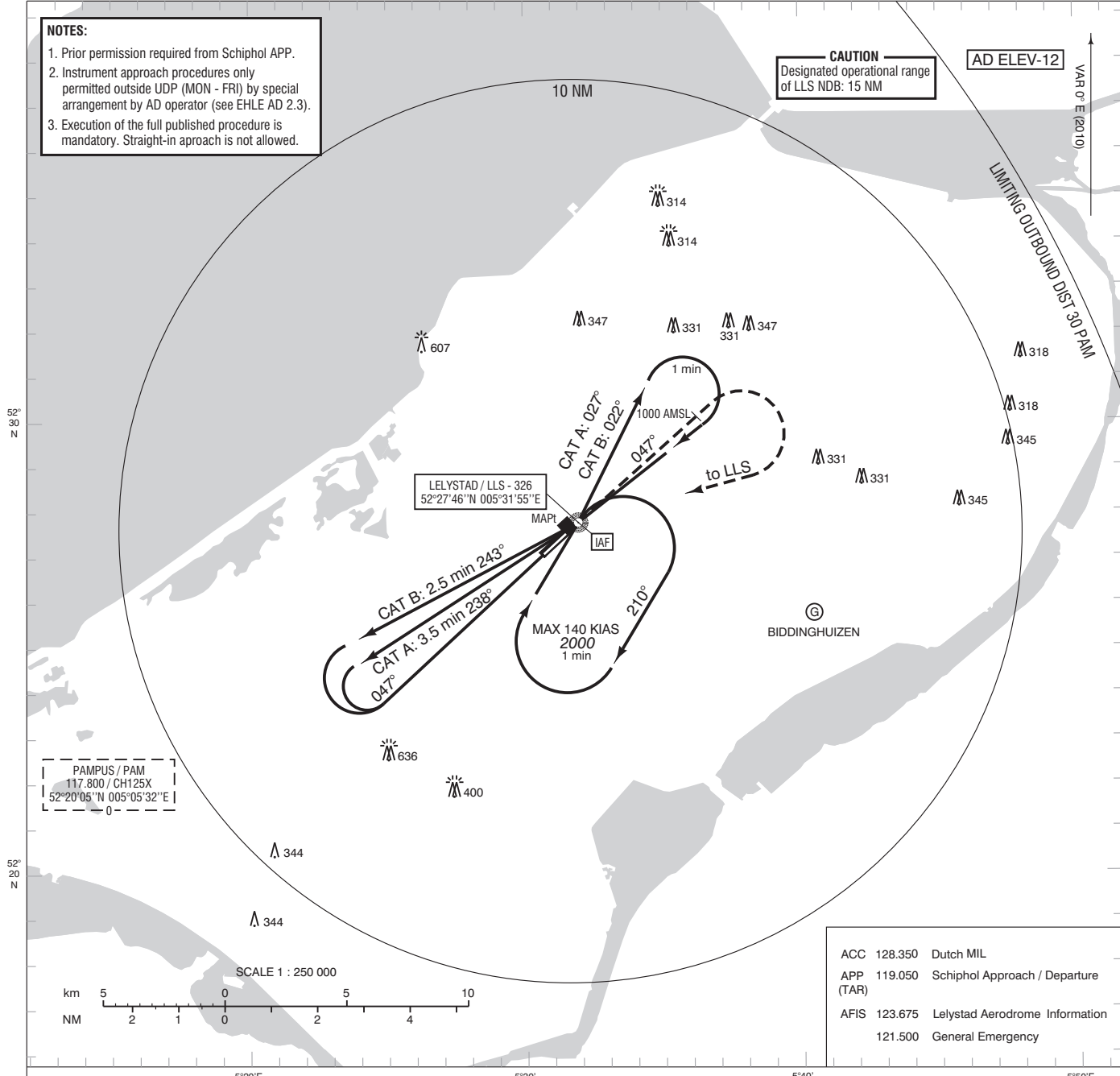
NOTES:
 1. Prior permission required from Schiphol APP.
 2. Instrument approach procedures only permitted outside UDP (MON - FRI) by special arrangement by AD operator (see EHLE AD 2.3).
 3. Execution of the full published procedure is mandatory. Straight-in approach is not allowed.

CAUTION
 Designated operational range of LLS NDB: 15 NM

AD ELEV-12

VAR 0° E (2010)

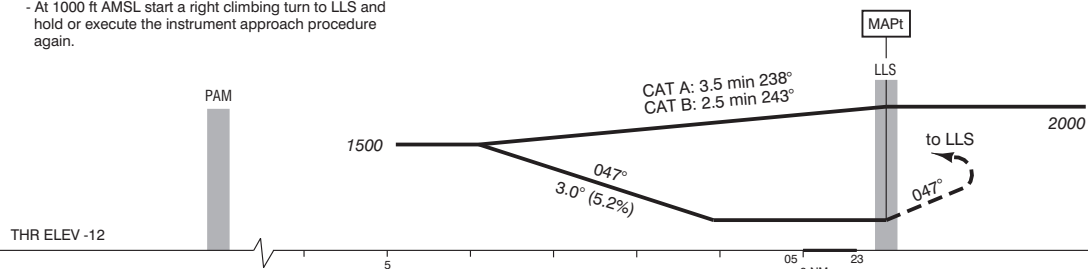
LIMITING OUTBOUND DIST 30 PAM

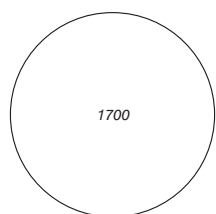


- Missed approach:
 - Track 047° MAG and climb to 2000 ft AMSL;
 - At 1000 ft AMSL start a right climbing turn to LLS;
 - Inform ATC immediately on current channel.
- Missed approach in case of communication failure:
 - Track 047° MAG and climb to 2000 ft AMSL;
 - At 1000 ft AMSL start a right climbing turn to LLS and hold or execute the instrument approach procedure again.

TRANSITION LEVEL BY ATC
 TRANSITION ALTITUDE 3000 ft AMSL

LIMITING OUTBOUND DIST 30 PAM



GS IN KT	60	80	100	120	140	160	
VERTICAL SPEED	320 ft/min	425 ft/min	530 ft/min	635 ft/min	745 ft/min	850 ft/min	
OCA (OCH) ELEV THR 05: -12 ft							MSA BASED ON LLS NDB 
ACFT CAT	NDB MAPt: NDB (LLS)	CIRCLING					
A	890 (900)	NOT ALLOWED					
B		NOT ALLOWED					
C	NOT ALLOWED						
D	NOT ALLOWED						
CEILING AND VISIBILITY MINIMA			BEARINGS ARE MAGNETIC DISTANCES IN NM ALTITUDES AND ELEVATIONS IN FEET				
TAKE-OFF	DAY:	NA	NIGHT:	NA			
LANDING	DAY:	NA	NIGHT:	NA			