

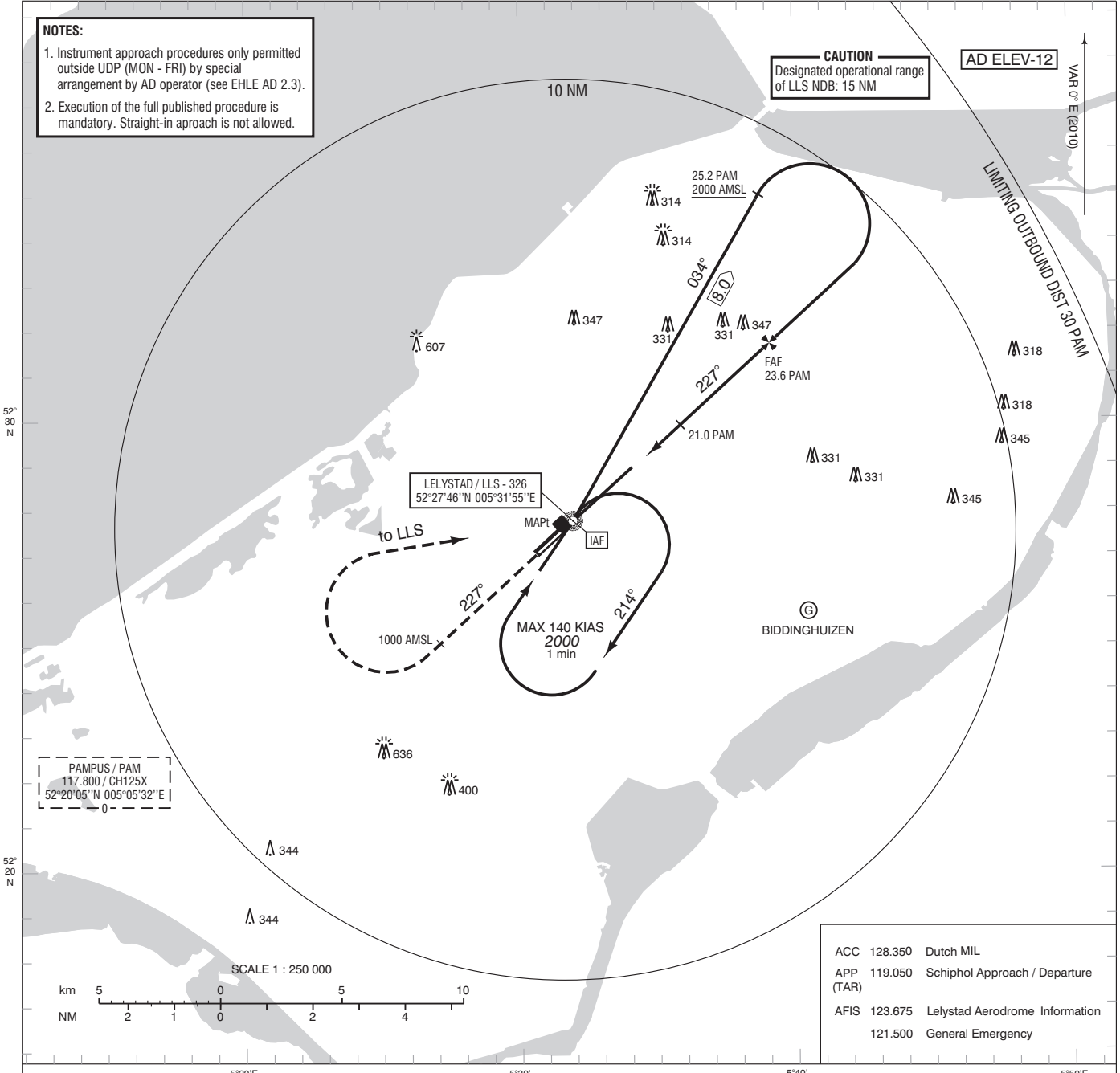
**NOTES:**

- Instrument approach procedures only permitted outside UDP (MON - FRI) by special arrangement by AD operator (see EHLE AD 2.3).
- Execution of the full published procedure is mandatory. Straight-in approach is not allowed.

**CAUTION**  
Designated operational range of LLS NDB: 15 NM

AD ELEV-12

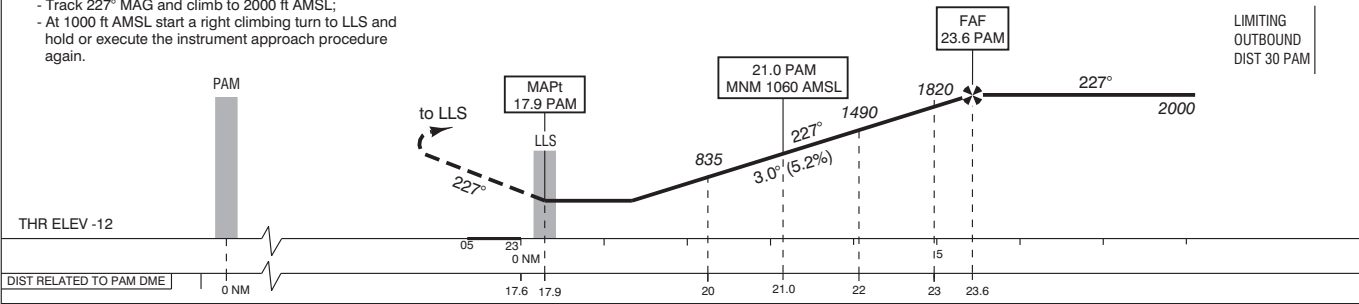
VAR 0° E (2010)

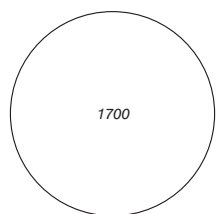


- Missed approach:
  - Track 227° MAG and climb to 2000 ft AMSL;
  - At 1000 ft AMSL start a right climbing turn to LLS;
  - Inform ATC immediately on current channel.
- Missed approach in case of communication failure:
  - Track 227° MAG and climb to 2000 ft AMSL;
  - At 1000 ft AMSL start a right climbing turn to LLS and hold or execute the instrument approach procedure again.

DO NOT DESCEND BELOW THE DESCENT PROFILE

TRANSITION LEVEL BY ATC  
TRANSITION ALTITUDE 3000 ft AMSL



OCA (OCH) ELEV THR 23: -12 ft			MSA BASED ON LLS NDB	
ACFT CAT	NDB / DME MAPt: NDB (LLS)	CIRCLING		
A	700 (720)	NOT ALLOWED		
B		NOT ALLOWED		
C	NOT ALLOWED			
D	NOT ALLOWED			
CEILING AND VISIBILITY MINIMA			BEARINGS ARE MAGNETIC DISTANCES IN NM ALTITUDES AND ELEVATIONS IN FEET	
TAKE-OFF	DAY:	NA	NIGHT:	NA
LANDING	DAY:	NA	NIGHT:	NA

CHANGE: OCA (OCH), tracks, new WPT symbols and layout, editorial.