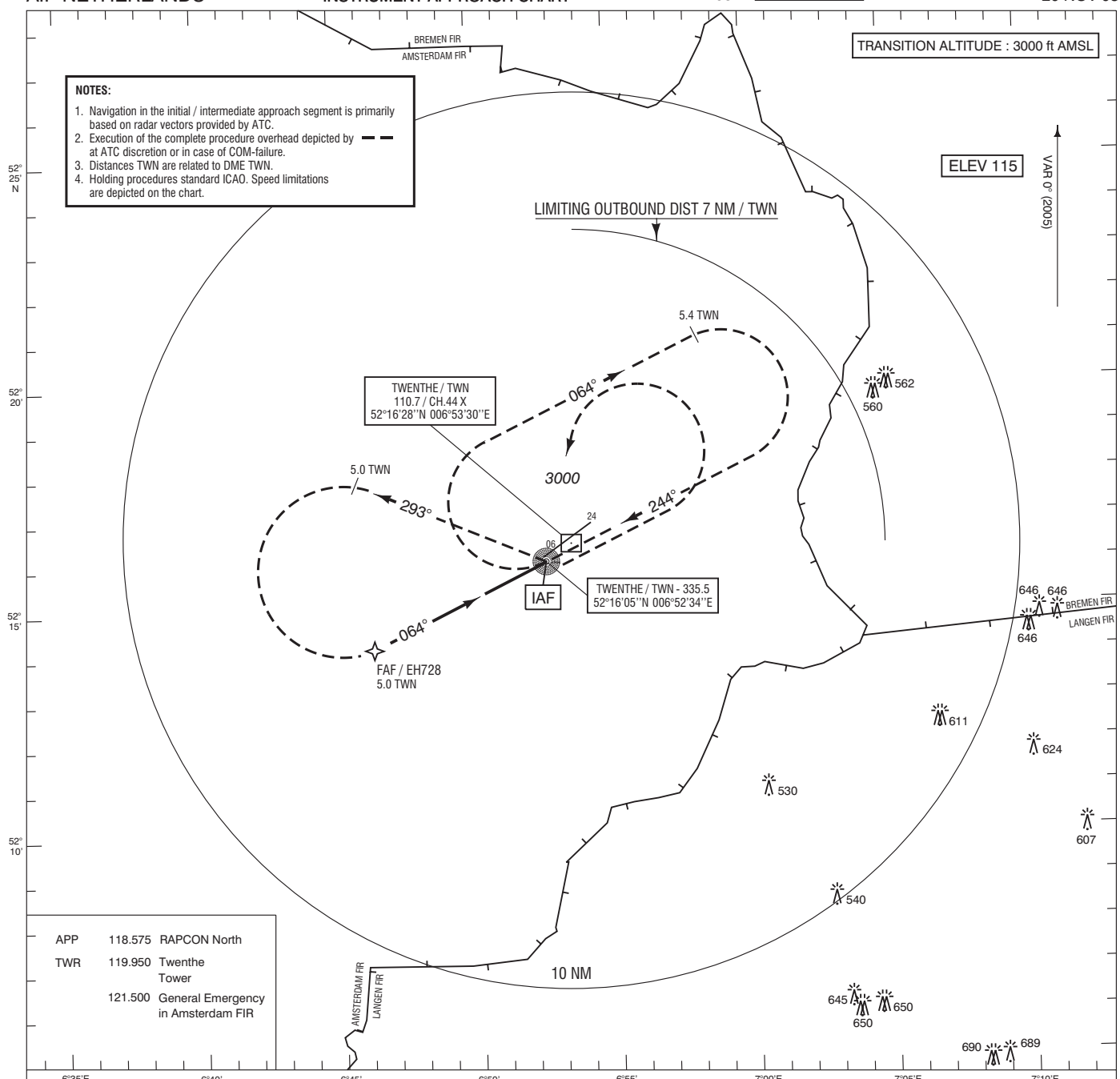


TRANSITION ALTITUDE : 3000 ft AMSL

NOTES:

1. Navigation in the initial / intermediate approach segment is primarily based on radar vectors provided by ATC.
2. Execution of the complete procedure overhead depicted by --- at ATC discretion or in case of COM-failure.
3. Distances TWN are related to DME TWN.
4. Holding procedures standard ICAO. Speed limitations are depicted on the chart.



APP 118.575 RAPCON North
TWR 119.950 Twenthe Tower
121.500 General Emergency in Amsterdam FIR

Missed Approach:

- At MAPt track 055° MAG.
- At 1500 ft AMSL turn left inbound IAF (NDB TWN) and climb to 2000 ft AMSL.
- Contact APP.

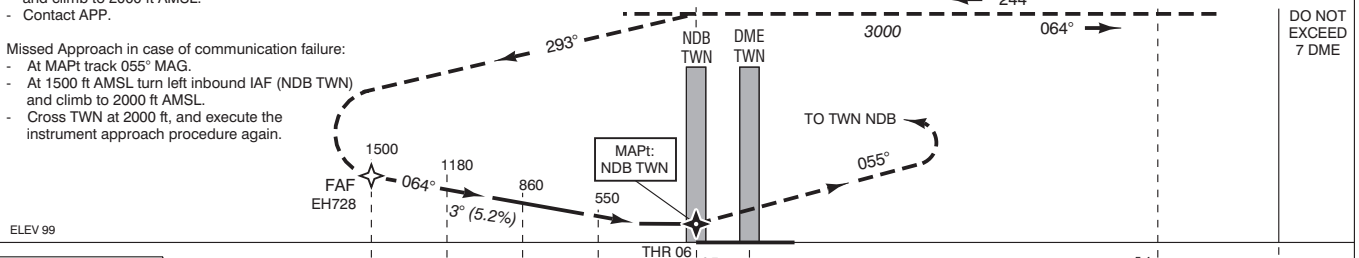
Missed Approach in case of communication failure:

- At MAPt track 055° MAG.
- At 1500 ft AMSL turn left inbound IAF (NDB TWN) and climb to 2000 ft AMSL.
- Cross TWN at 2000 ft, and execute the instrument approach procedure again.

DO NOT DESCEND BELOW THE DESCENT PROFILE GIVEN ALTITUDES TO BE CONSIDERED AS MNM ALT

TRANSITION LEVEL BY ATC
TRANSITION ALTITUDE: 3000 ft AMSL

DO NOT EXCEED 7 DME



DIST RELATED TO DME TWN	8	7	6	5	4	3	2	1	0.7	0	1	2	3	4	5	6	7
GS IN KT				60		80		100		120		140		160		180	
VERTICAL SPEED				ft/min		ft/min		ft/min		ft/min		ft/min		ft/min		ft/min	
				320		425		530		635		745		850		955	

OCA (OCH) ELEV THR 06: 99.48 ft			MSA BASED ON TWN NDB	
ACFT CAT	NDB/DME MAPt: NDB	CIRCLING	EH728 52°14'11"N 006°46'16"E	
A	450 (351)	620 (505)		
B	480 (381)	700 (585)		
C	510 (411)	800 (685)		
D	NOT ALLOWED	NOT ALLOWED		
BEARINGS ARE MAGNETIC DISTANCES IN NM ALTITUDES AND ELEVATIONS IN FEET				
CEILING AND VISIBILITY MINIMA				
TAKE-OFF	DAY: NA	NIGHT: NA		
LANDING	DAY: NA	NIGHT: NA		

CHANGE : Tacan TWN withdrawn, DME TWN available, elevation, OCA/OCH, Missed Approach in case of communication failure, editorial.