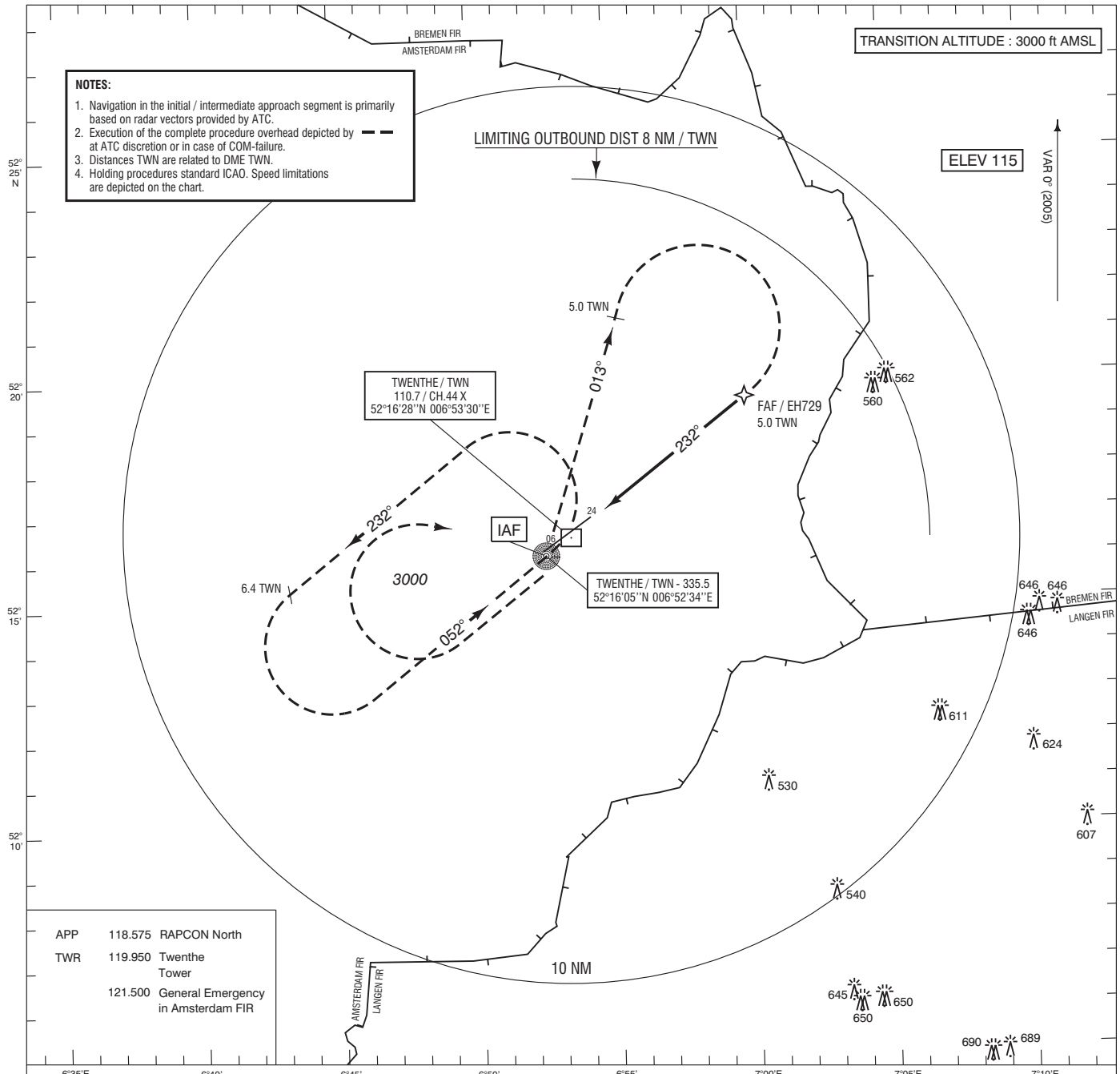
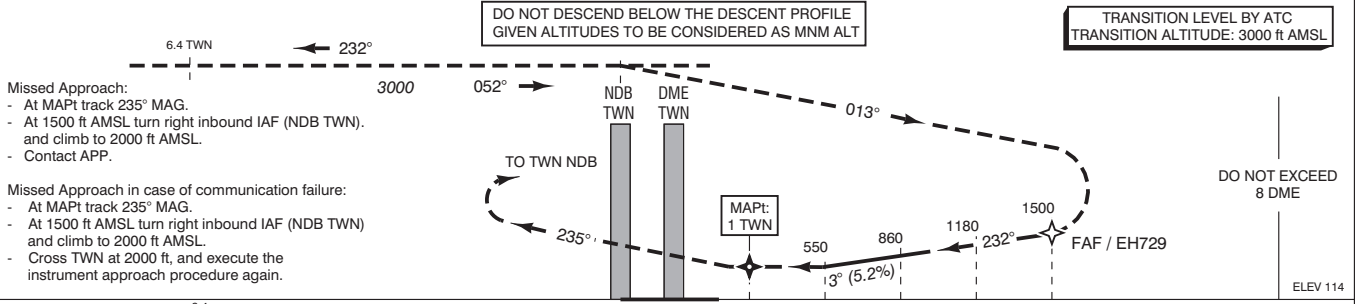


TRANSITION ALTITUDE : 3000 ft AMSL

NOTES:
 1. Navigation in the initial / intermediate approach segment is primarily based on radar vectors provided by ATC.
 2. Execution of the complete procedure overhead depicted by --- at ATC discretion or in case of COM-failure.
 3. Distances TWN are related to DME TWN.
 4. Holding procedures standard ICAO. Speed limitations are depicted on the chart.



APP 118.575 RAPCON North
 TWR 119.950 Twenthe Tower
 121.500 General Emergency in Amsterdam FIR



DIST RELATED TO DME TWN	6.4	5.0	4.0	3.0	2.0	1.0	0.61	1.0	2.0	3.0	4.0	5.0	6.0	7.0	8.0
GS IN KT	60	80	100	120	140	160	180								
VERTICAL SPEED	ft/min	ft/min	ft/min	ft/min	ft/min	ft/min	ft/min								
	320	425	530	635	745	850	955								

OCA (OCH) ELEV THR 24: 113.91 ft				EH729 52°19'36"N 006°59'52"E		MSA BASED ON TWN NDB	
ACFT CAT	NDB/DME MAPt:THR	CIRCLING	BEARINGS ARE MAGNETIC DISTANCES IN NM ALTITUDES AND ELEVATIONS IN FEET				
A	500 (386)	620 (505)					
B		700 (585)					
C		800 (685)					
D	NOT ALLOWED	NOT ALLOWED					
CEILING AND VISIBILITY MINIMA							
TAKE-OFF	DAY: NA	NIGHT: NA					
LANDING	DAY: NA	NIGHT: NA					