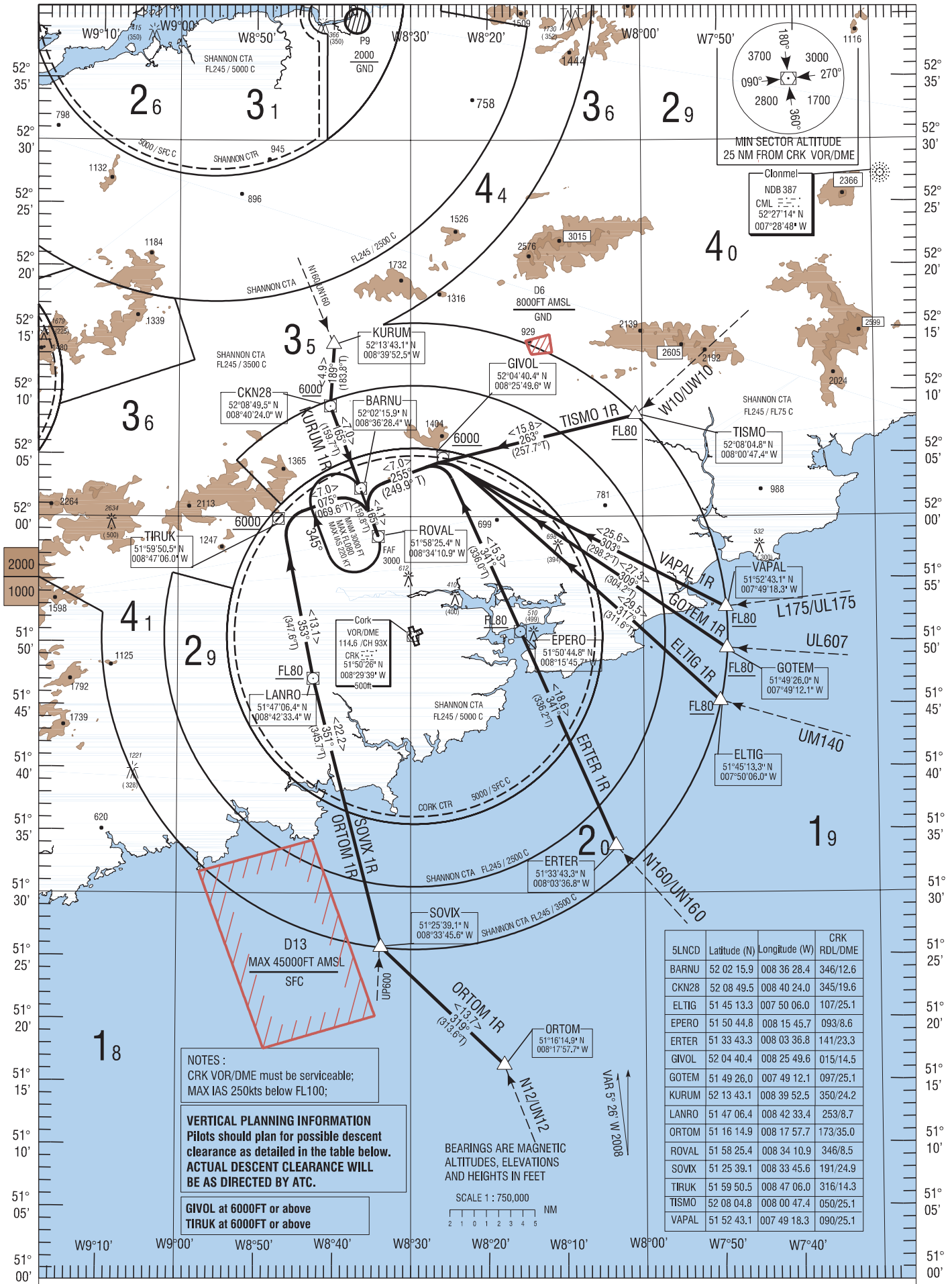


GND 121.850  
ATIS 120.925  
TWR 119.300  
CRK APP 119.900

TISMO 1R, VAPAL 1R, GOTEM 1R, ELTIG 1R,  
ORTOM 1R, SOVIX 1R, KURUM 1R, ERTER 1R.



CHANGE: New Chart

CORK STANDARD ARRIVALS (INSTRUMENT)  
RUNWAY 17

## ELTIG1R STAR RWY17

Path Descriptor	Waypoint Name	Fly Over	Course °M (°T)	Turn Direction	Altitude	Speed Limit (Kt)	Magnetic variation	Navigation performance
IF	ELTIG	-	-	-	+FL080	-	5.4	P-RNAV
TF	GIVOL	-	317 (311.6)	-	+6000	-	5.4	P-RNAV
TF	BARNU	-	255 (249.9)	-	-	220	5.4	P-RNAV
TF or CF	ROVAL	-	165 (159.8)	-	3000	-	5.4	P-RNAV

## ERTER1R STAR RWY17

Path Descriptor	Waypoint Name	Fly Over	Course °M (°T)	Turn Direction	Altitude	Speed Limit (Kt)	Magnetic variation	Navigation performance
IF	ERTER	-	-	-	-	-	5.4	P-RNAV
TF	EPERO	-	341 (336.2)	-	+FL080	-	5.4	P-RNAV
TF	GIVOL	-	341 (336.0)	-	+6000	-	5.4	P-RNAV
TF	BARNU	-	255 (249.9)	-	-	220	5.4	P-RNAV
TF or CF	ROVAL	-	165 (159.8)	-	3000	-	5.4	P-RNAV

## GOTEM1R STAR RWY17

Path Descriptor	Waypoint Name	Fly Over	Course °M (°T)	Turn Direction	Altitude	Speed Limit (Kt)	Magnetic variation	Navigation performance
IF	GOTEM	-	-	-	+FL080	-	5.4	P-RNAV
TF	GIVOL	-	309 (304.2)	-	+6000	-	5.4	P-RNAV
TF	BARNU	-	255 (249.9)	-	-	220	5.4	P-RNAV
TF or CF	ROVAL	-	165 (159.8)	-	3000	-	5.4	P-RNAV

## KURUM1R STAR RWY17

Path Descriptor	Waypoint Name	Fly Over	Course °M (°T)	Turn Direction	Altitude	Speed Limit (Kt)	Magnetic variation	Navigation performance
IF	KURUM	-	-	-	-	-	5.4	P-RNAV
TF	CKN28	-	189 (183.8)	-	+6000	-	5.4	P-RNAV
TF	BARNU	-	165 (159.7)	-	-	220	5.4	P-RNAV
TF or CF	ROVAL	-	165 (159.8)	-	3000	-	5.4	P-RNAV

## ORTOM1R STAR RWY17

Path Descriptor	Waypoint Name	Fly Over	Course °M (°T)	Turn Direction	Altitude	Speed Limit (Kt)	Magnetic variation	Navigation performance
IF	ORTOM	-	-	-	-	-	5.4	P-RNAV
TF	SOVIX	-	319 (313.6)	-	-	-	5.4	P-RNAV
TF	LANRO	-	351 (345.7)	-	+FL080	-	5.4	P-RNAV
TF	TIRUK	-	353 (347.6)	-	+6000	-	5.4	P-RNAV
TF	BARNU	-	075 (069.6)	-	-	220	5.4	P-RNAV
TF or CF	ROVAL	-	165 (159.8)	-	3000	-	5.4	P-RNAV

## SOVIX1R STAR RWY17

Path Descriptor	Waypoint Name	Fly Over	Course °M (°T)	Turn Direction	Altitude	Speed Limit (Kt)	Magnetic variation	Navigation performance
IF	SOVIX	-	-	-	-	-	5.4	P-RNAV
TF	LANRO	-	351 (345.7)	-	+FL080	-	5.4	P-RNAV
TF	TIRUK	-	353 (347.6)	-	+6000	-	5.4	P-RNAV
TF	BARNU	-	075 (069.6)	-	-	220	5.4	P-RNAV
TF or CF	ROVAL	-	165 (159.8)	-	3000	-	5.4	P-RNAV

## TISMO1R STAR RWY17

Path Descriptor	Waypoint Name	Fly Over	Course °M (°T)	Turn Direction	Altitude	Speed Limit (Kt)	Magnetic variation	Navigation performance
IF	TISMO	-	-	-	+FL080	-	5.4	P-RNAV
TF	GIVOL	-	263 (257.7)	-	+6000	-	5.4	P-RNAV
TF	BARNU	-	255 (249.9)	-	-	220	5.4	P-RNAV
TF or CF	ROVAL	-	165 (159.8)	-	3000	-	5.4	P-RNAV

## VAPAL1R STAR RWY17

Path Descriptor	Waypoint Name	Fly Over	Course °M (°T)	Turn Direction	Altitude	Speed Limit (Kt)	Magnetic variation	Navigation performance
IF	VAPAL	-	-	-	+FL080	-	5.4	P-RNAV
TF	GIVOL	-	303 (298.2)	-	+6000	-	5.4	P-RNAV
TF	BARNU	-	255 (249.9)	-	-	220	5.4	P-RNAV
TF or CF	ROVAL	-	165 (159.8)	-	3000	-	5.4	P-RNAV