

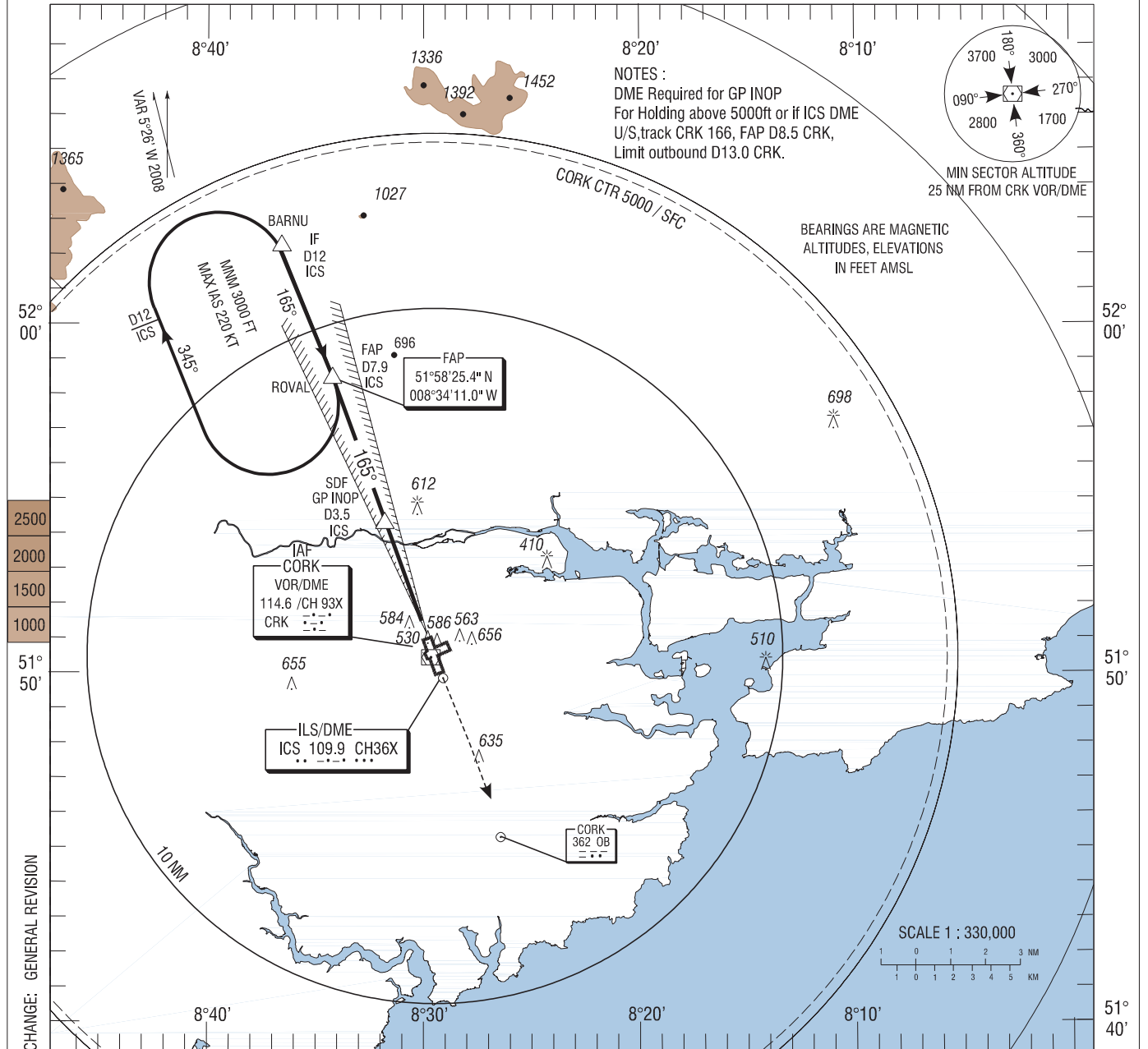
**INSTRUMENT  
APPROACH  
CHART-ICAO**

**AERODROME ELEV 502 ft**  
HEIGHTS RELATED TO THR  
RWY 17 - ELEV 477 ft

TWR 119.300  
GND 121.850  
ATIS 120.925  
CRK APP 119.900

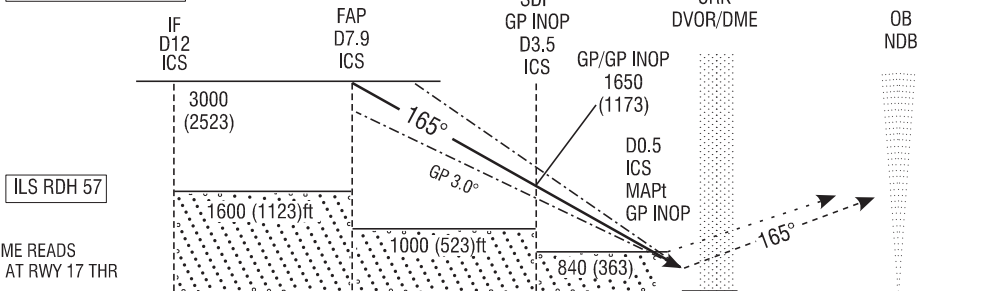
CONSULT NOTAM  
FOR LATEST  
INFORMATION

**CORK/CORK**  
**ILS CAT I & II or LLZ RWY 17**  
(ACFT CAT A, B, C, D)



TRANSITION  
ALTITUDE 5000 ft

MISSED APPROACH: Climb  
straight ahead to 3000FT.  
Contact ATC. (In the event of  
radio failure follow procedure  
on radio failure chart).



16 15 14 13 12 11 10 9 8 7 6 5 4 3 2 1 0 1 2 3 4 5 6 7 NM FROM THR RWY 17

OCA (H)		A	B	C	D	Recommended Profile on Final Approach for GP INOP													
Straight - in Approach	CAT I	627 (150)	637 (160)	649 (172)	665 (188)	ICS DME	7	6	5	4	3	2	1						
	CAT II	536 (59)	546 (69)	559 (82)	572 (95)	ALT (HT)	2760(2283)	2440(1963)	2120(1643)	1800(1323)	1480(1008)	1160(768)	850(373)						
	GP INOP	← 840 (363) →				Descent Rate 5.2%, (3°), 318ft/NM								fts	80	100	120	140	160
VISUAL MANOEUVRING (These heights are AAL)		960 (458)	1000 (498)	1100 (598)	1200 (698)									ft / min	425	530	635	745	850