

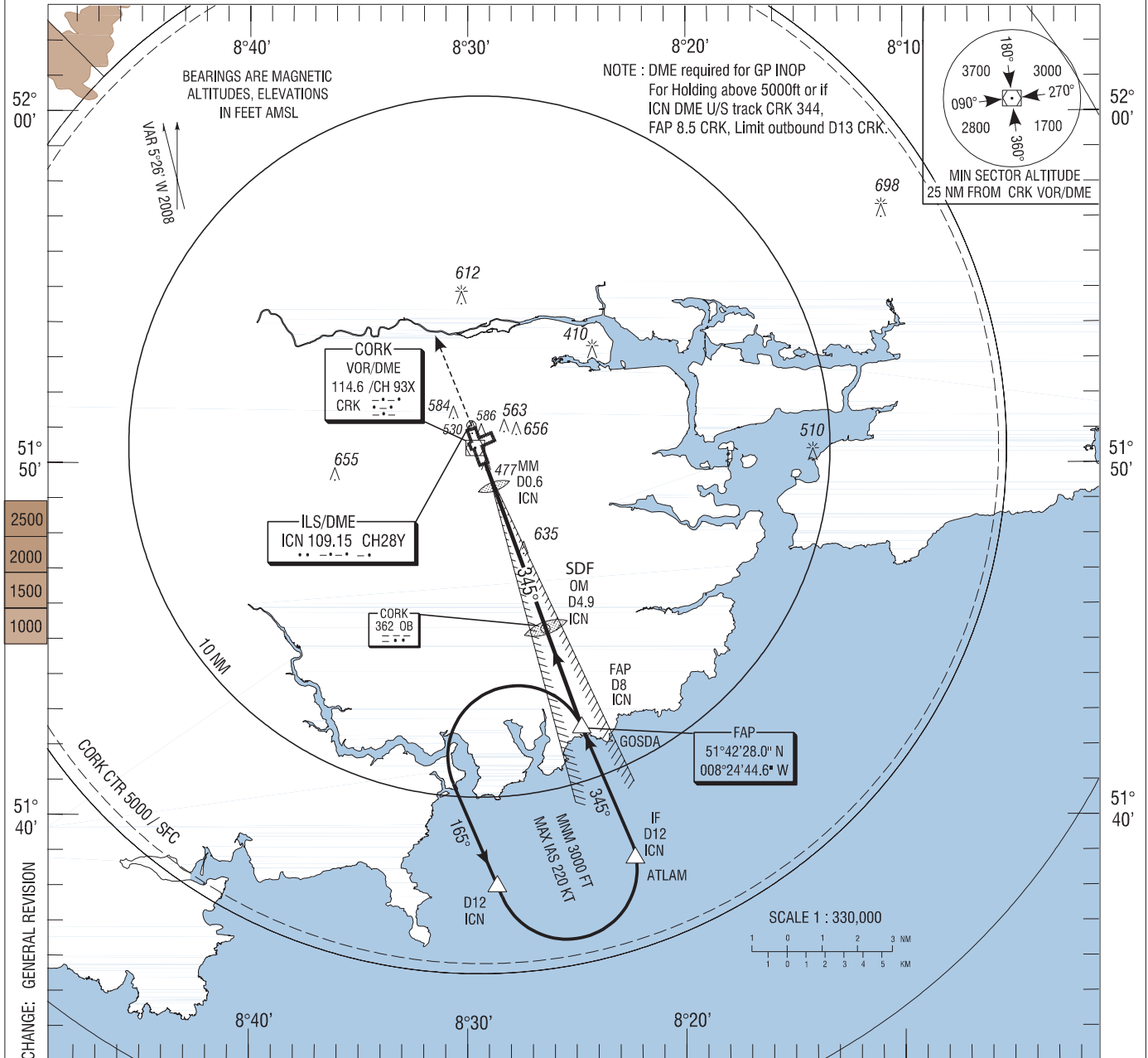
INSTRUMENT APPROACH CHART-ICAO

AERODROME ELEV 502 ft
HEIGHTS RELATED TO THR RWY 35 - ELEV 460 ft

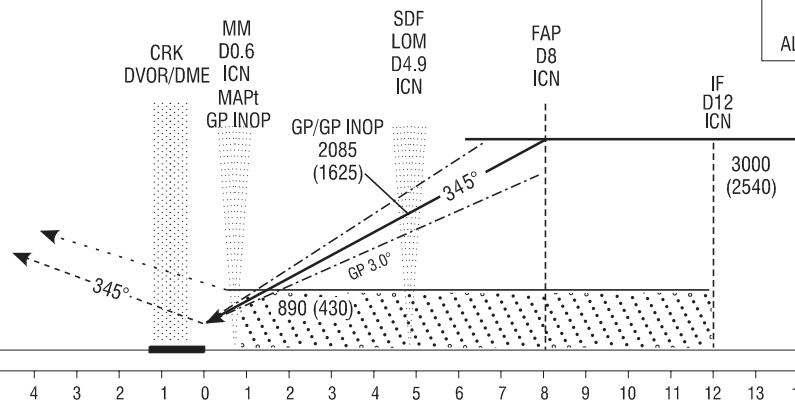
TWR 119.300
GND 121.850
ATIS 120.925
CRK APP 119.900

CONSULT NOTAM FOR LATEST INFORMATION

CORK/CORK ILS CAT I or LLZ RWY 35
(ACFT CAT A, B, C, D)



MISSED APPROACH: Climb straight ahead to 3000FT. Contact ATC. (In the event of radio failure follow procedure on radio failure chart).



TRANSITION ALTITUDE 5000 ft

OCA (H)		A	B	C	D	Recommended Profile on Final Approach											
Straight - in Approach	CAT I	610 (150)	621 (161)	633 (173)	648 (188)	ICN DME	7	6	5	4	3	2	1				
	GP INOP	← 890 (430) →				ALT (HT)	2740(2280)	2420(1960)	2110(1650)	1790(1330)	1470(1010)	1150(690)	830(370)				
VISUAL MANOEUVRING (These heights are AAL)		960 (458)	1000 (498)	1100 (598)	1200 (698)	Descent Rate 5.2%, (3°), 318ft/NM						80	100	120	140	160	
												ft / min	425	530	635	745	850