

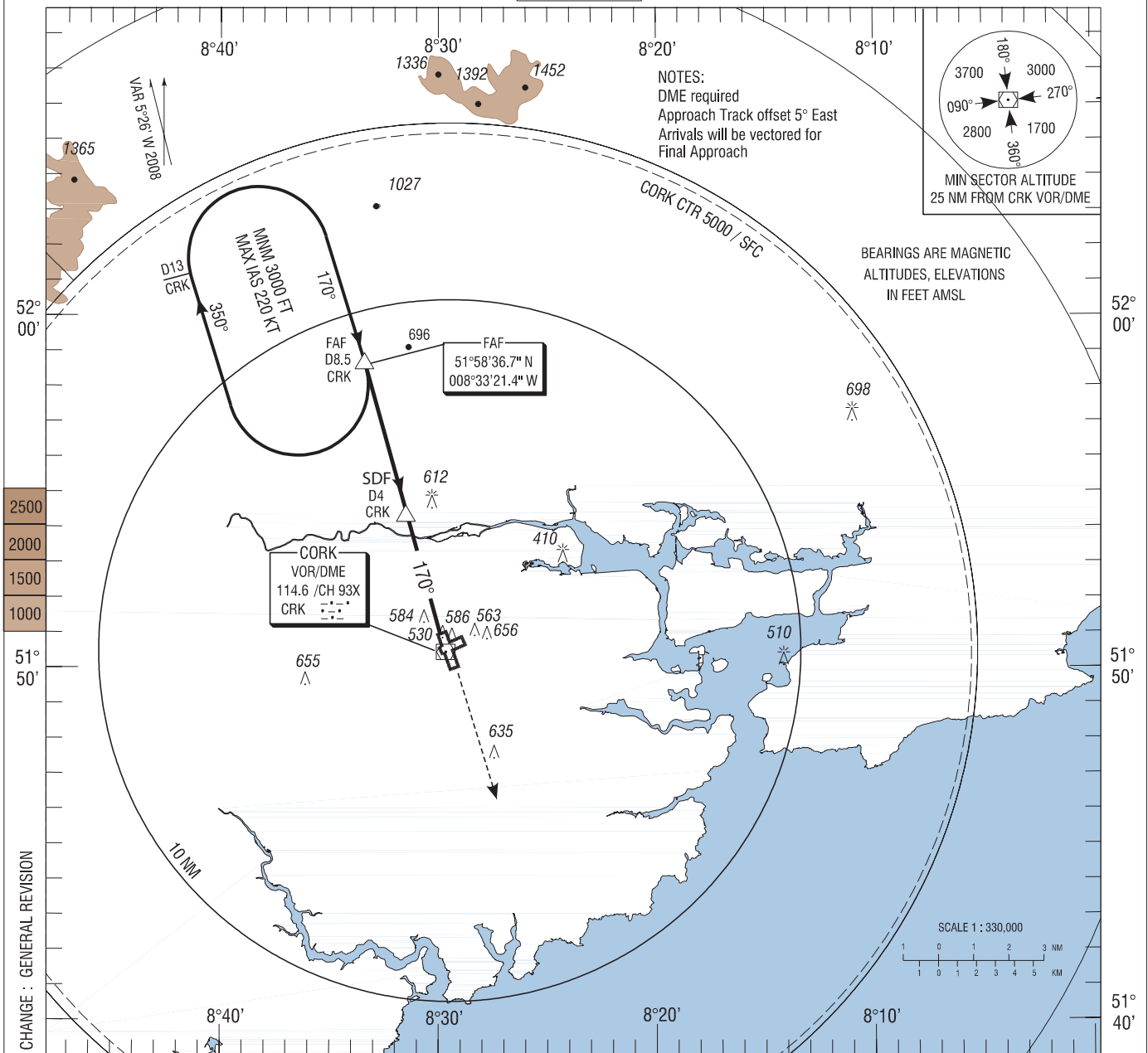
**INSTRUMENT
APPROACH
CHART- ICAO**

AERODROME ELEV 502 ft
HEIGHTS RELATED TO THR
RWY 17 - ELEV 477 ft

TWR 119.300
GND 121.850
ATIS 120.925
CRK APP 119.900

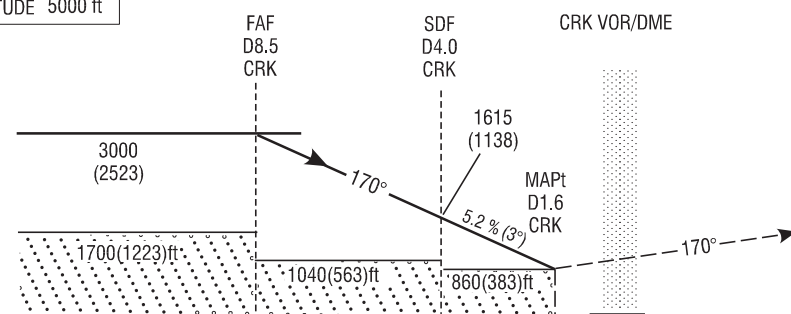
CONSULT NOTAM
FOR LATEST
INFORMATION

**CORK/CORK
VOR RWY 17**
(ACFT CAT A, B, C, D)



TRANSITION
ALTITUDE 5000 ft

MISSED APPROACH: Climb
straight ahead to 3000FT.
Contact ATC. (In the event of
radio failure follow procedure
on radio failure chart).



ELEV 477 ft (THR RWY 17)

	16	15	14	13	12	11	10	9	8	7	6	5	4	3	2	1	0	1	2	3	4	5	6	7										
OCA (H)	A				B				C				D				Recommended Profile on Final Approach																	
Straight - in Approach	← 860 (383) →																CRK DME	8	7	6	5	4	3	2										
																	ALT (HT)	2890(2413)	2570(2093)	2250(1773)	1930(1453)	1620(1143)	1300(823)	980(503)										
VISUAL MANOEUVRING (These heights are AAL)	960 (458)	1000 (498)	1100 (598)	1200 (698)													Descent Rate 5.2%, (3°), 318ft/NM						fts	80	100	120	140	160						
																							ft / min	425	530	635	745	850						