

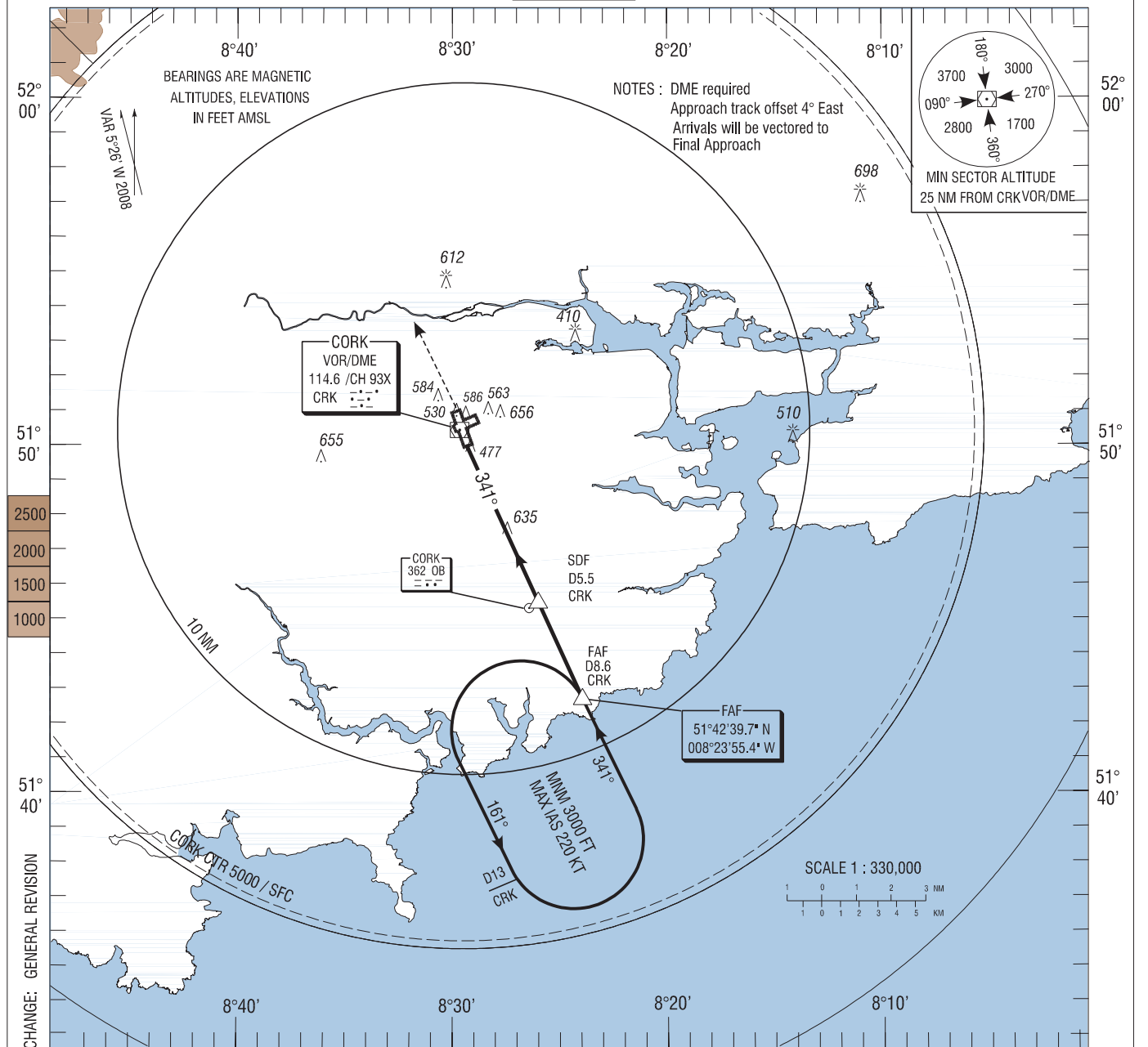
**INSTRUMENT
APPROACH
CHART-ICAO**

AERODROME ELEV 502 ft
HEIGHTS RELATED TO THR
RWY 35 - ELEV 460 ft

TWR 119.300
GND 121.850
ATIS 120.925
CRK APP 119.900

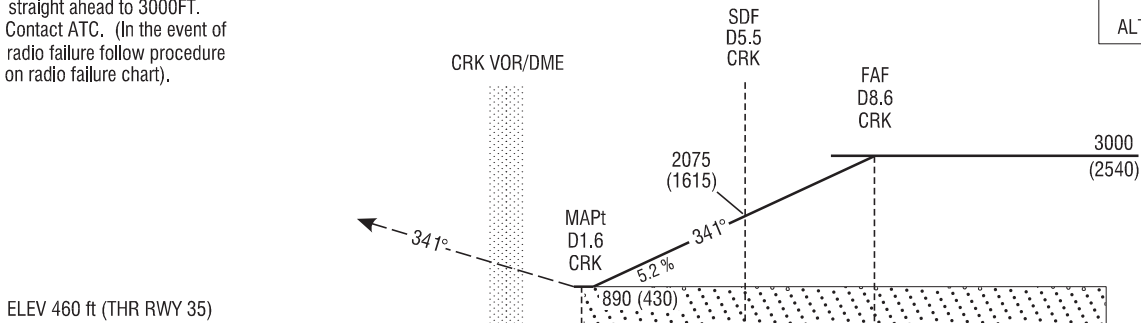
CONSULT NOTAM
FOR LATEST
INFORMATION

**CORK/CORK
VOR RWY 35**
(ACFT CAT A, B, C, D)



MISSED APPROACH: Climb straight ahead to 3000FT. Contact ATC. (In the event of radio failure follow procedure on radio failure chart).

**TRANSITION
ALTITUDE 5000 ft**



7 6 5 4 3 2 1 0 1 2 3 4 5 6 7 8 9 10 11 12 13 14 15 16

OCA (H)	A	B	C	D	Recommended Profile on Final Approach							
					CRK DME	8	7	6	5	4	3	2
Straight - in Approach	← 890 (430) →				ALT (HT)	2870(2410)	2550(2090)	2230(1770)	1920(1460)	1600(1140)	1280(820)	960(500)
	Descent Rate 5.2%, (3°), 318ft/NM							fts	80	100	120	140
VISUAL MANOEUVRING (These heights are AAL)	960 (458)	1000 (498)	1100 (598)	1200 (698)	ft / min							
					425 530 635 745 850							