

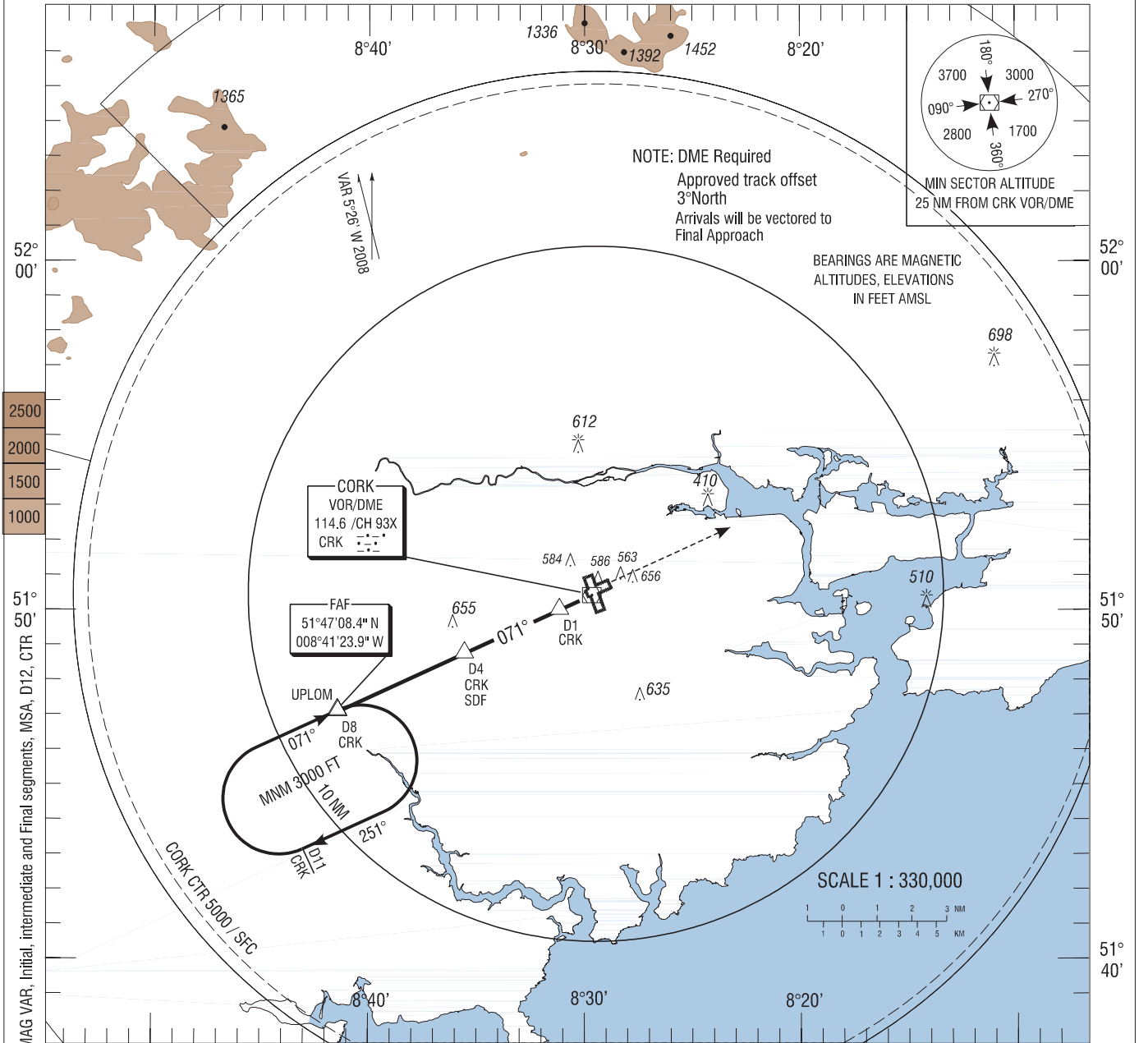
INSTRUMENT APPROACH CHART - ICAO

AERODROME ELEV 502 ft
 HEIGHTS RELATED TO THR
 RWY 07 - ELEV 471 ft

TWR 119.300
 GND 121.850
 ATIS 120.925
 CRK APP 119.900

CONSULT NOTAM FOR LATEST INFORMATION

CORK/CORK VOR RWY 07
 (ACFT CAT A, B)

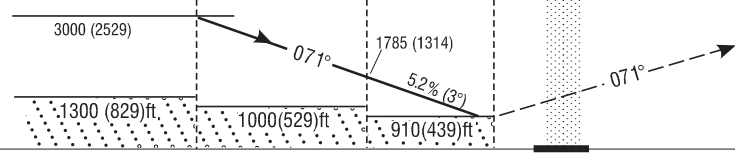


CHANGE: FAF, Hold, MAG VAR, Initial, intermediate and Final segments, MSA, D12, CTR

TRANSITION ALTITUDE 5000 ft

FAF D8.0 CRK
 SDF D4.0 CRK
 MAPt D1.0 CRK
 CRK VOR/DME

MISSED APPROACH: Climb straight ahead to 3000FT. Contact ATC. (In the event of radio failure follow procedure on radio failure chart).



ELEV 471 ft (THR RWY 07)

15 14 13 12 11 10 9 8 7 6 5 4 3 2 1 0 1 2 3 4 5 6 7																
OCA (H)	A				B				Recommended Profile on Final Approach							
Straight - in Approach	← 910 (439) →								CRK DME	7	6	5	4	3	2	
									ALT (HT)	2740(2269)	2420(1949)	2105(1634)	1785(1314)	1465(994)	1150(679)	
VISUAL MANOEUVRING (These heights are AAL)	A	B	C	D	Descent Rate 5.2%, (3°), 318ft/NM											
	960 (458)	1000 (498)	1100 (598)	1200 (698)						kts		80	100	120	140	160
										ft / min		430	535	640	750	855