

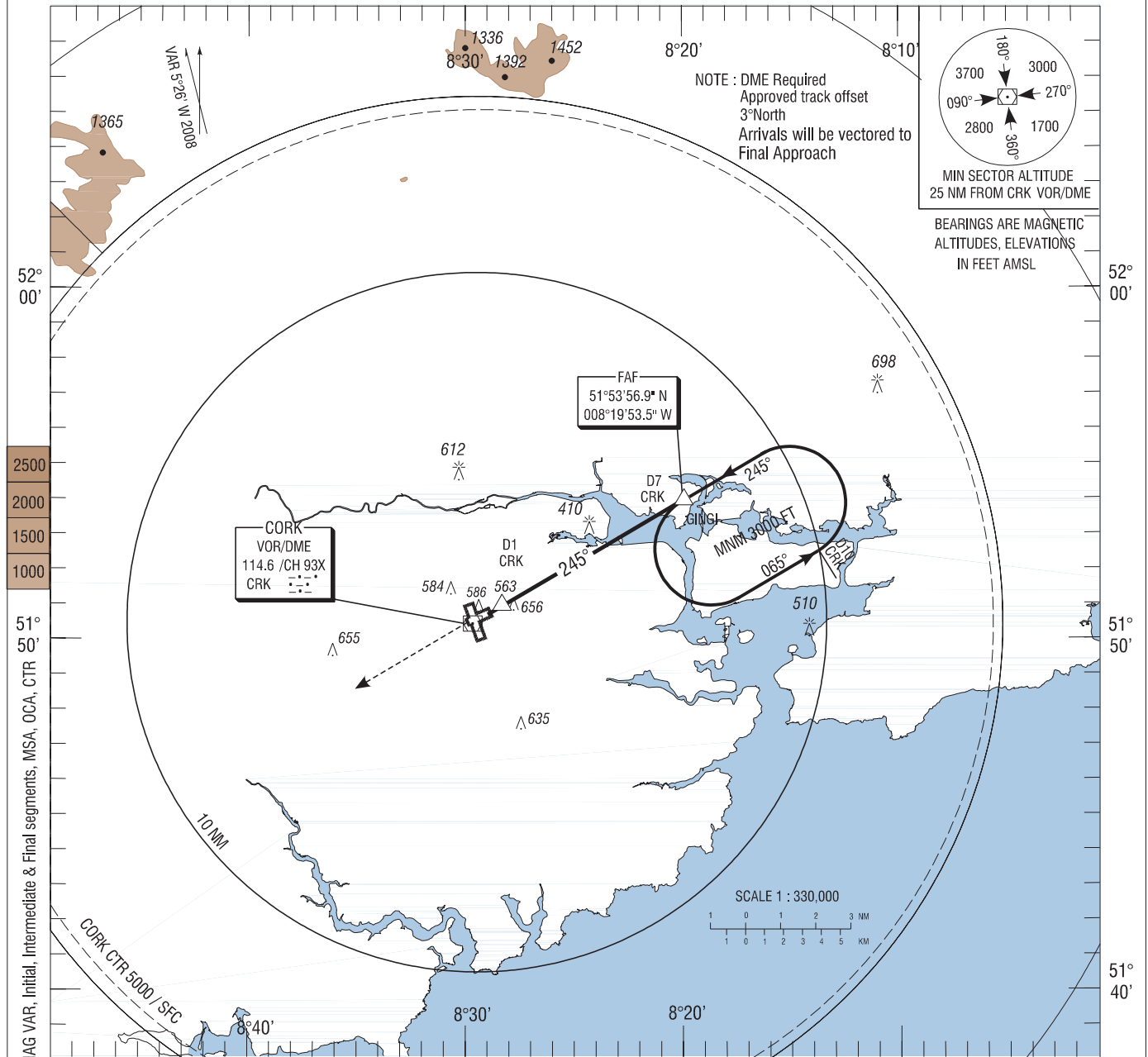
**INSTRUMENT
APPROACH
CHART- ICAO**

AERODROME ELEV 502 ft
HEIGHTS RELATED TO THR
RWY 25 - ELEV 502 ft

TWR 119.300
GND 121.850
ATIS 120.925
CRK APP 119.900

CONSULT NOTAM
FOR LATEST
INFORMATION

**CORK/CORK
VOR RWY 25**
(ACFT CAT A, B)

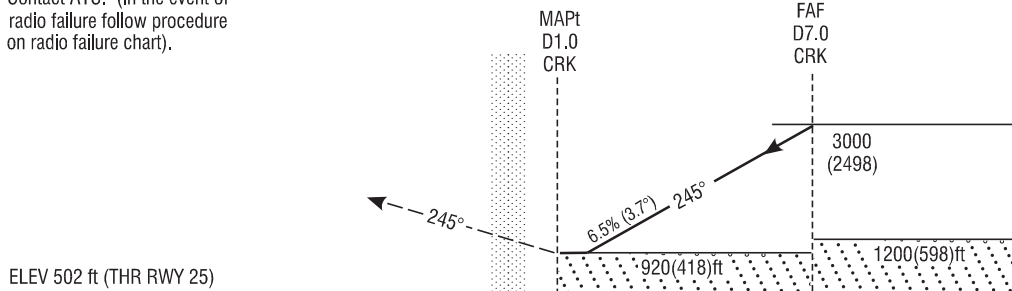


MISSED APPROACH: Climb
straight ahead to 3000FT.
Contact ATC. (In the event of
radio failure follow procedure
on radio failure chart).

CHANGE: FAF, HOLD, MAG VAR, Initial, Intermediate & Final segments, MSA, OCA, CTR

CRK VOR/DME

TRANSITION
ALTITUDE 5000 ft



7 6 5 4 3 2 1 0 1 2 3 4 5 6 7 8 9 10 11 12 13 14 15 16

OCA (H)	A		B		Recommended Profile on Final Approach							
	Straight - in Approach				CRK DME	6	5	4	3	2		
	← 920 (418) →				ALT (HT)	2640(2138)	2250(1748)	1855(1353)	1460(958)	1070(568)		
VISUAL MANOEUVRING (These heights are AAL)	A	B	C	D	Descent Rate 6.5%, (3.7°), 393ft/NM	kts		80	100	120	140	160
	960 (458)	1000 (498)	1100 (598)	1200 (698)		ft / min		540	670	800	940	1070