

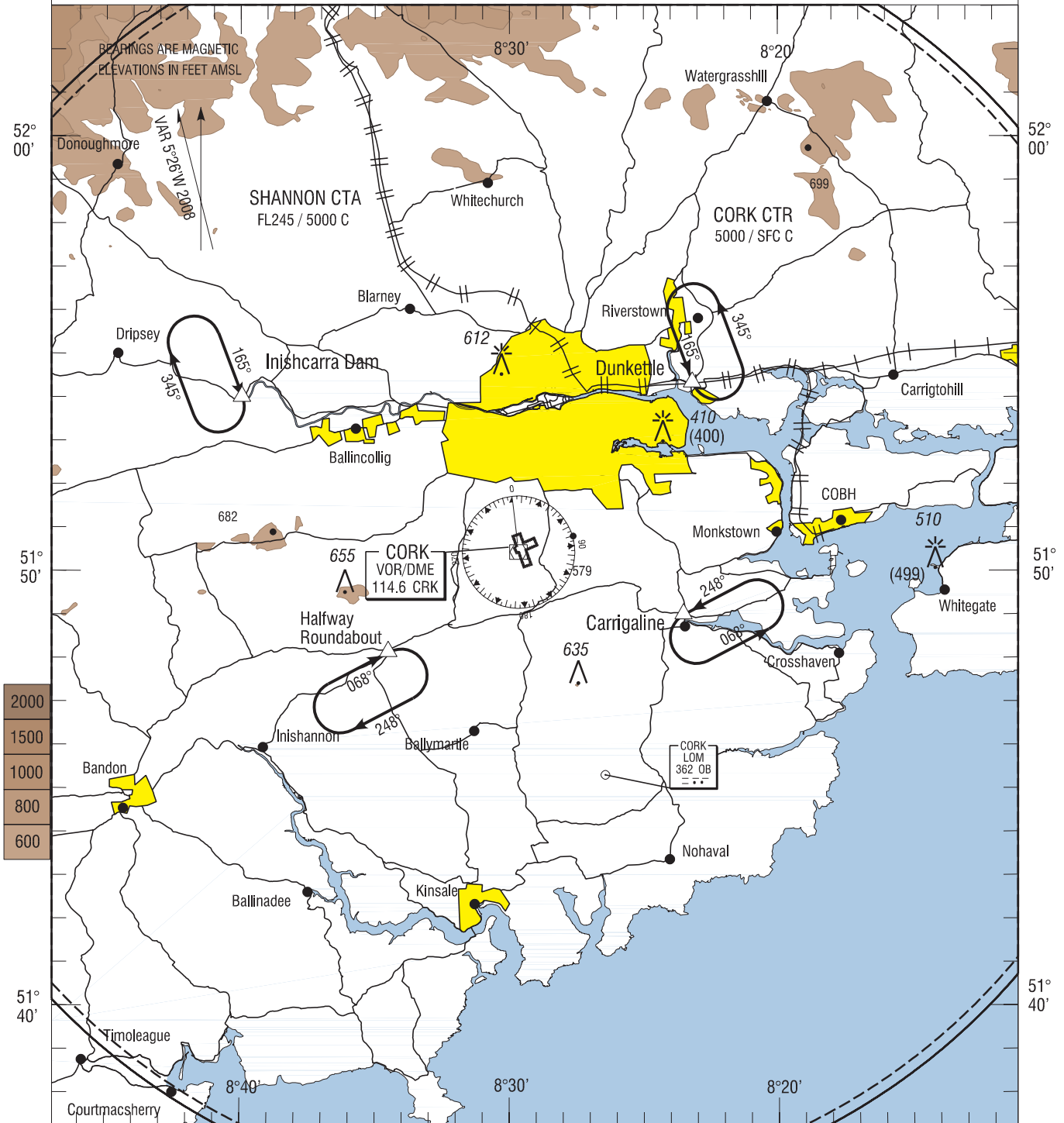
VISUAL
APPROACH
CHART - ICAO

AERODROME ELEV
502 ft

TWR 119.300	RADAR 118.800
GND 121.850	ATIS 120.925
CRK APP 119.900	

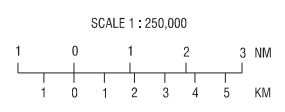
CONSULT NOTAM
FOR LATEST
INFORMATION

CORK / CORK



Visual Holding Pattern
(Based on TAS 120 kts)

Note 1: In the event of a radio failure :
 - Aircraft from the West, route to the Halfway Hold
 - Aircraft from the East, route to the Carrigaline Hold
 to receive landing instructions from the Control Tower using the ALDIS lamp.



CHANGE : Magnetic Variation, D12 removed, OC removed, Hold bearings, Halfway Hold added, Ballinhassig Hold removed.