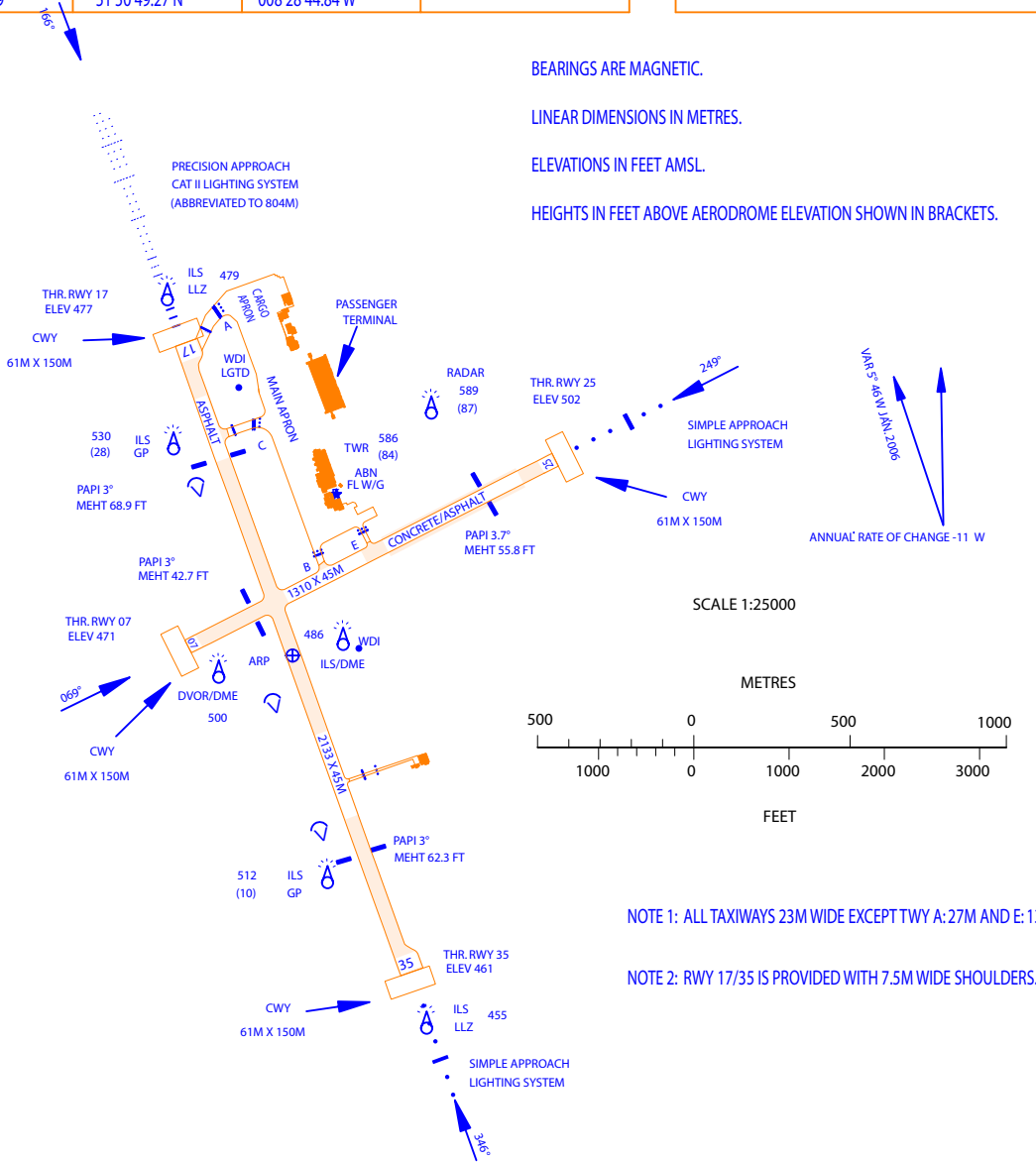


AERODROME CHART - ICAO	51 50 28.57 N 008 29 28.00 W	ELEV 502 FT	TWR 119.3 GND 121.85 ATIS 120.925	CONSULT NOTAM FOR LATEST INFORMATION	CORK AIRPORT/ IRELAND
------------------------	---------------------------------	-------------	---	--	-----------------------

RWY	DIRECTION	THR		BEARING STRENGTH	LEGEND	
17	166°	51 51 00.97 N	008 29 47.18 W	PCN 63/R/C/W/T	RVR	
35	346°	51 49 56.16 N	008 29 08.84 W		STOPBAR	
07	069°	51 50 29.78 N	008 29 45.59 W	PCN 55/R/C/W/U	RUNWAY HOLDING POSITION MARKINGS	
25	249°	51 50 49.27 N	008 28 44.84 W			

BEARINGS ARE MAGNETIC.
 LINEAR DIMENSIONS IN METRES.
 ELEVATIONS IN FEET AMSL.
 HEIGHTS IN FEET ABOVE AERODROME ELEVATION SHOWN IN BRACKETS.



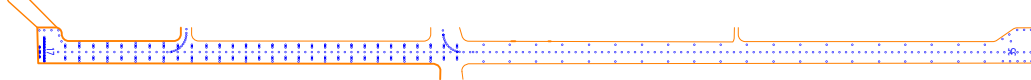
NOTE 1: ALL TAXIWAYS 23M WIDE EXCEPT TWY A: 27M AND E: 13M.
 NOTE 2: RWY 17/35 IS PROVIDED WITH 7.5M WIDE SHOULDERS.



MARKING AIDS RUNWAY 07/25 - NOT TO SCALE



MARKING AIDS RUNWAY 17/35 - NOT TO SCALE



LIGHTING AIDS RUNWAY 17/35 - NOT TO SCALE

NOTE: LIGHTING AIDS ON RUNWAY 07/25 CONSIST OF EDGE LIGHTS AND RUNWAY END LIGHTS.

CHANGES: NEW PASSENGER TERMINAL, MAGNETIC VARIATION, ELEVATION THR RWY 35, GND FREQUENCY, LIGHT AIRCRAFT PARKING REMOVED