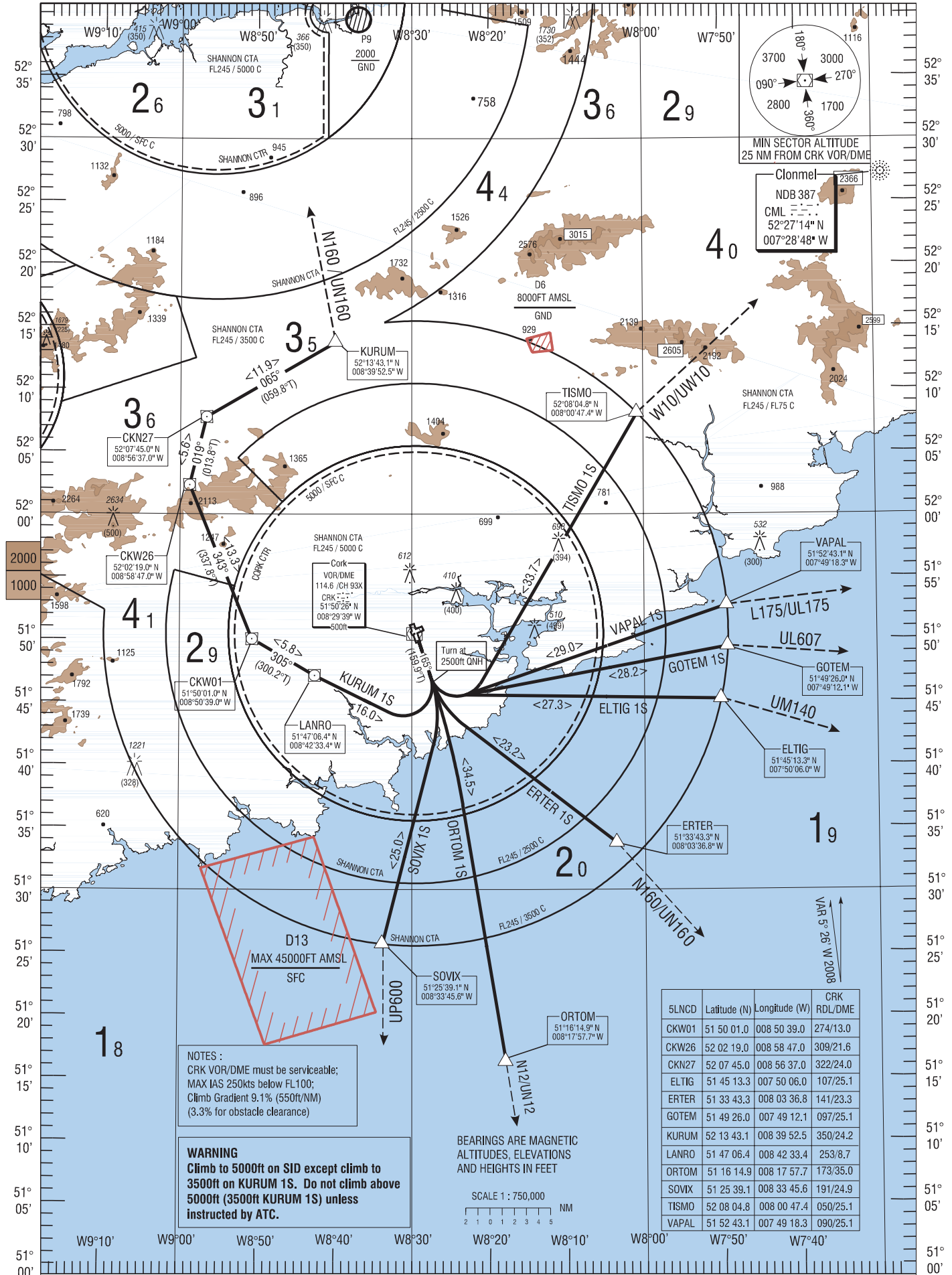


GND	121.850
ATIS	120.925
TWR	119.300
CRK APP	119.900

TISMO 1S, VAPAL 1S, GOTEM 1S, ERTER 1S,
ELTIG 1S, ORTOM 1S, SOVIX 1S, KURUM 1S.



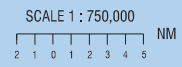
MIN SECTOR ALTITUDE
25 NM FROM CRK VOR/DME

Clonmel
NDB 387
CML ---
52°27'14" N
007°28'48" W

NOTES :
CRK VOR/DME must be serviceable;
MAX IAS 250kts below FL100;
Climb Gradient 9.1% (550ft/NM)
(3.3% for obstacle clearance)

WARNING
Climb to 5000ft on SID except climb to
3500ft on KURUM 1S. Do not climb above
5000ft (3500ft KURUM 1S) unless
instructed by ATC.

BEARINGS ARE MAGNETIC
ALTITUDES, ELEVATIONS
AND HEIGHTS IN FEET



5LNCID	Latitude (N)	Longitude (W)	CRK RDL/DME
CKW01	51 50 01.0	008 50 39.0	274/13.0
CKW26	52 02 19.0	008 58 47.0	309/21.6
CKN27	52 07 45.0	008 56 37.0	322/24.0
ELTIG	51 45 13.3	007 50 06.0	107/25.1
ERTER	51 33 43.3	008 03 36.8	141/23.3
GOTEM	51 49 26.0	007 49 12.1	097/25.1
KURUM	52 13 43.1	008 39 52.5	350/24.2
LANRO	51 47 06.4	008 42 33.4	253/8.7
ORTOM	51 16 14.9	008 17 57.7	173/35.0
SOVIX	51 25 39.1	008 33 45.6	191/24.9
TISMO	52 08 04.8	008 00 47.4	050/25.1
VAPAL	51 52 43.1	007 49 18.3	090/25.1

CHANGE: New Chart

CORK STANDARD INSTRUMENT DEPARTURES RWY 17

ALL AIRCRAFT CATEGORIES

ELTIG1S SID RWY17

Path Terminator	Waypoint Name	Fly Over	Course °M (°T)	Turn Direction	Altitude	Speed Limit (Kt)	Magnetic Variation	Navigation Performance
CA	RWY17	-	165 (159.9)	-	+2500	-	+5.4	P-RNAV
DF	ELTIG	-	-	L	-	-	+5.4	P-RNAV

ERTER1S SID RWY17

Path Terminator	Waypoint Name	Fly Over	Course °M (°T)	Turn Direction	Altitude	Speed Limit (Kt)	Magnetic Variation	Navigation Performance
CA	RWY17	-	165 (159.9)	-	+2500	-	+5.4	P-RNAV
DF	ERTER	-	-	L	-	-	+5.4	P-RNAV

GOTEM1S SID RWY17

Path Terminator	Waypoint Name	Fly Over	Course °M (°T)	Turn Direction	Altitude	Speed Limit (Kt)	Magnetic Variation	Navigation Performance
CA	RWY17	-	165 (159.9)	-	+2500	-	+5.4	P-RNAV
DF	GOTEM	-	-	L	-	-	+5.4	P-RNAV

KURUM1S SID RWY17

Path Terminator	Waypoint Name	Fly Over	Course °M (°T)	Turn Direction	Altitude	Speed Limit (Kt)	Magnetic Variation	Navigation Performance
CA	RWY17	-	165 (159.9)	-	+2500	-	+5.4	P-RNAV
DF	LANRO	-	-	R	-	-	+5.4	P-RNAV
TF	CKW01	-	305 (300.2)	-	-	-	+5.4	P-RNAV
TF	CKW26	-	343 (337.8)	-	-	-	+5.4	P-RNAV
TF	CKN27	-	019 (013.8)	-	-	-	+5.4	P-RNAV
TF	KURUM	-	065 (059.8)	-	-	-	+5.4	P-RNAV

ORTOM1S SID RWY17

Path Terminator	Waypoint Name	Fly Over	Course °M (°T)	Turn Direction	Altitude	Speed Limit (Kt)	Magnetic Variation	Navigation Performance
CA	RWY17	-	165 (159.9)	-	+2500	-	+5.4	P-RNAV
DF	ORTOM	-	-	-	-	-	+5.4	P-RNAV

SOVIX1S SID RWY17

Path Terminator	Waypoint Name	Fly Over	Course °M (°T)	Turn Direction	Altitude	Speed Limit (Kt)	Magnetic Variation	Navigation Performance
CA	RWY17	-	165 (159.9)	-	+2500	-	+5.4	P-RNAV
DF	SOVIX	-	-	R	-	-	+5.4	P-RNAV

TISMO1S SID RWY17

Path Terminator	Waypoint Name	Fly Over	Course °M (°T)	Turn Direction	Altitude	Speed Limit (Kt)	Magnetic Variation	Navigation Performance
CA	RWY17	-	165 (159.9)	-	+2500	-	+5.4	P-RNAV
DF	TISMO	-	-	L	-	-	+5.4	P-RNAV

VAPAL1S SID RWY17

Path Terminator	Waypoint Name	Fly Over	Course °M (°T)	Turn Direction	Altitude	Speed Limit (Kt)	Magnetic Variation	Navigation Performance
CA	RWY17	-	165 (159.9)	-	+2500	-	+5.4	P-RNAV
DF	VAPAL	-	-	L	-	-	+5.4	P-RNAV