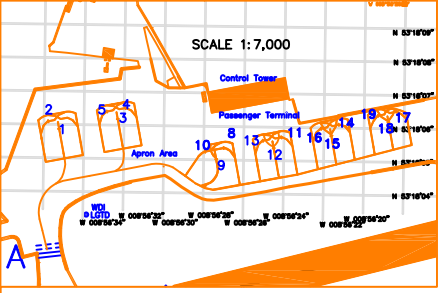
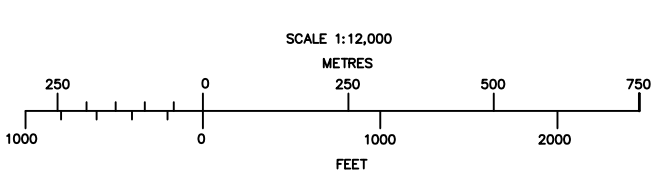
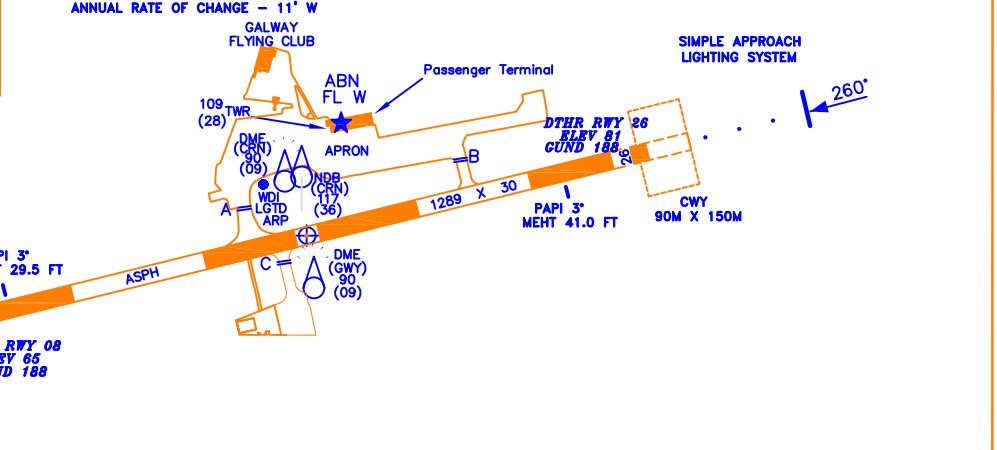


AERODROME CHART - ICAO 53 18 01 N AERODROME ELEV 81FT TWR 122.5 CONSULT NOTAM
 008 56 30 W APRON ELEV 73FT GND 121.825 FOR LATEST GALWAY AIRPORT/ IRELAND
 ATIS 118.225 INFORMATION

RWY	DIRECTION	THR	BEARING STRENGTH	LEGEND
08	080°	53 17 56 N 008 57 02 W	PCN 29/F/B/Y/T	AIRCRAFT STAND 1
26	260°	53 18 06 N 008 55 58 W		RUNWAY HOLDING POSITION MARKING

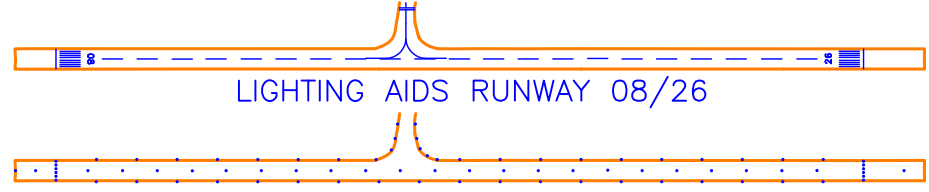


BEARINGS ARE MAGNETIC.
 LINEAR DIMENSIONS IN METRES.
 ELEVATIONS IN FEET AMSL.
 HEIGHTS IN FEET ABOVE AERODROME ELEVATION SHOWN IN BRACKETS.



AMENDMENT RECORD		
NO.	DATE	ENTERED BY

SCALE 1:10,000
 MARKING AIDS RUNWAY 08/26



Stand	Latitude	Longitude	Max Wingspan	Max Length	Conditions
01*	53 18 05.88 N	008 56 35.24 W	—	—	Self Manoeuvring
02*	53 18 06.09 N	008 56 35.79 W	—	—	Self Manoeuvring
03*	53 18 06.19 N	008 56 32.32 W	—	—	Self Manoeuvring
04*	53 18 06.41 N	008 56 32.87 W	—	—	Self Manoeuvring
05*	53 18 06.52 N	008 56 31.94 W	—	—	Self Manoeuvring
08*	53 18 05.36 N	008 56 27.01 W	—	—	Self Manoeuvring
09*	53 18 05.03 N	008 56 27.38 W	—	—	Self Manoeuvring
10*	53 18 05.25 N	008 56 27.93 W	—	—	Self Manoeuvring
11*	53 18 05.70 N	008 56 24.13 W	—	—	Self Manoeuvring
12*	53 18 05.38 N	008 56 24.51 W	—	—	Self Manoeuvring
13*	53 18 05.59 N	008 56 25.05 W	—	—	Self Manoeuvring
14*	53 18 05.77 N	008 56 21.64 W	—	—	Self Manoeuvring
15*	53 18 06.10 N	008 56 21.27 W	—	—	Self Manoeuvring
16*	53 18 05.98 N	008 56 22.15 W	—	—	Self Manoeuvring
17*	53 18 06.52 N	008 56 18.42 W	—	—	Self Manoeuvring
18*	53 18 06.19 N	008 56 18.79 W	—	—	Self Manoeuvring
19*	53 18 06.39 N	008 56 19.31 W	—	—	Self Manoeuvring

NOTE 1: APRON : PCN 16/F/C/Y/T.
 NOTE 2: TAXIWAYS A, B & C: PCN 27/F/B/Y/T
 NOTE 3: TAXIWAY A : 23M WIDE.
 NOTE 4: TAXIWAY C : 18M WIDE.
 NOTE 5: TAXIWAY B : 18M WIDE.
 NOTE 6: APRON SURFACE : ASPHALT.
 NOTE 7: PUSH BACK NOT AVAILABLE ON STANDS.
 NOTE 8: * DATA WHOSE ACCURACY HAS NOT BEEN QUALITY ASSURED.

CHANGES: Taxiway PCN, MEHT, Runway length and surface,