

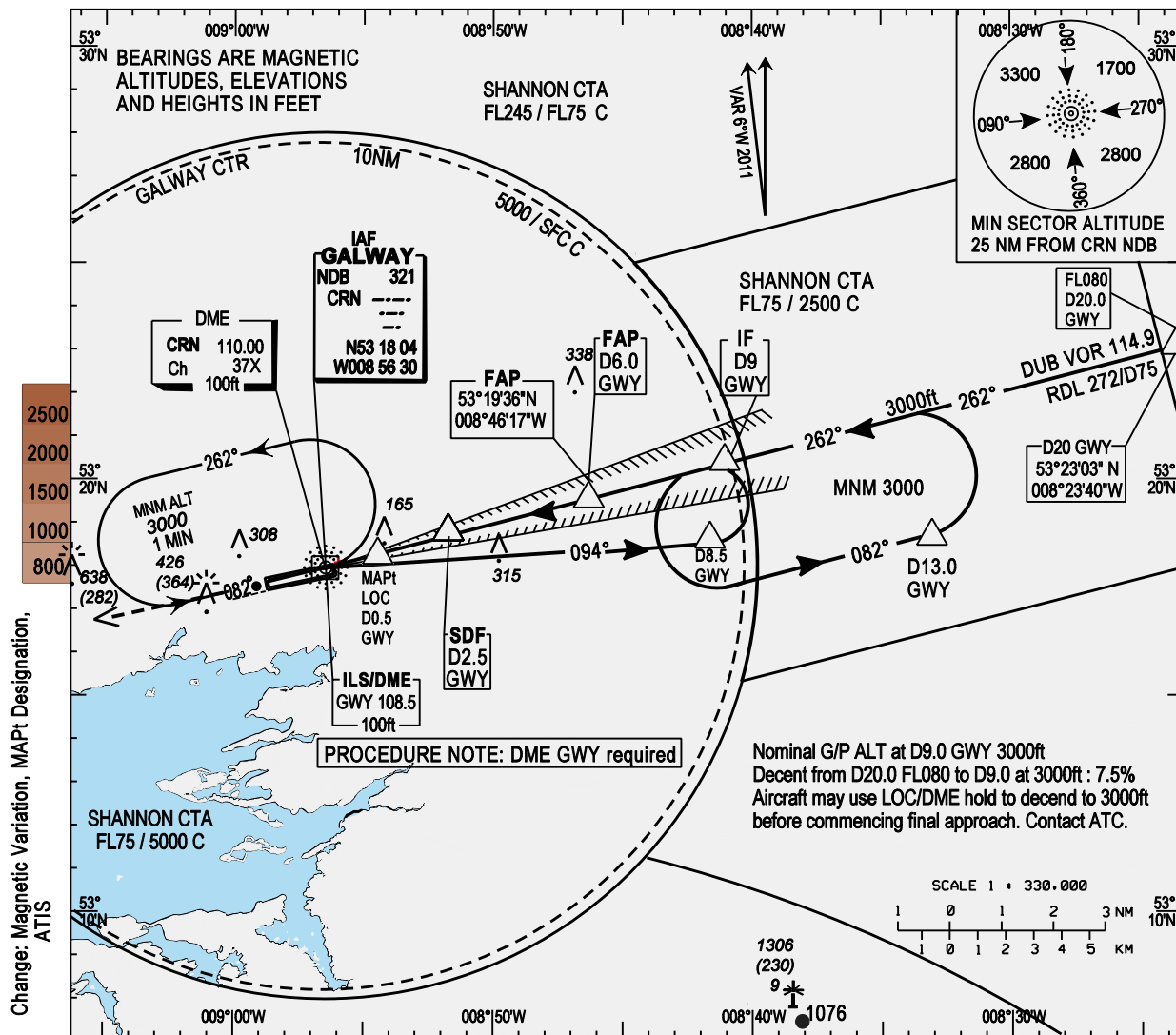
**INSTRUMENT APPROACH CHART - ICAO**

**AERODROME ELEV 81 ft**  
 HEIGHTS RELATED TO THR  
 RWY 26 - ELEV 81 ft

Tower 122.5  
 RADAR 121.4  
 Control 124.7  
 ATIS 118.225

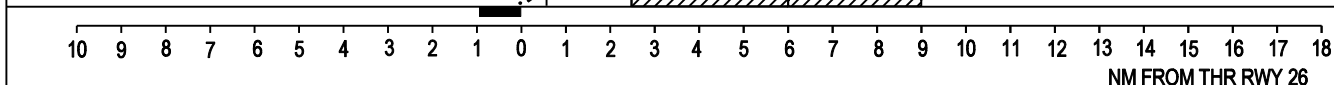
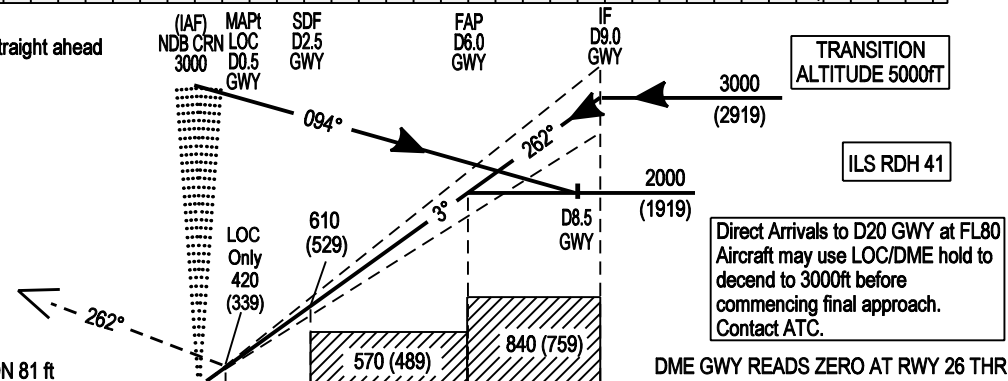
CONSULT NOTAM  
 LATEST  
 INFORMATION

**GALWAY / GALWAY**  
 ILS RWY 26 or LOC RWY 26  
 (ACFT CAT A,B,C)



Mapping Based on Ordnance Survey Ireland by Permission of the Government © Government of Ireland Permit Number 7109

**MISSED APPROACH:** Climb straight ahead to 3000(2919)ft. Contact ATC. In the event of radio failure, on reaching 3000(2919)Ft turn left to NDB CRN at 3000Ft.



OCA (H)	A	B	C	NOTE: INSTRUMENT APPROACHES ONLY AVAILABLE WHEN AIR TRAFFIC CONTROL ZONE IS ACTIVE UNLESS AUTHORIZED BY THE OPERATING STANDARDS DEPARTMENT OF THE IAA							
ILS CAT I	276 (195)	288 (207)	296 (215)	Nominal G/P ALT at D9.0 GWY 3000ft. Decent from D20.0 FL080 to D9.0 at 3000ft		Ground Speed	Kts	150	180	210	240
				Rate of Decent 7.5% Ft/Min		1150	1370	1600	1820		
LOC only	← 420 (339) →			Glide Path / Recommended Profile							
	DME		5	4	3	2	1				
Visual Manoeuvring (These heights are AAL)	ALT (HT)		1720 (1639)	1400 (1319)	1080 (999)	760 (679)	440 (359)				
	Ground Speed		Kts		140	120	100	80			
	Decent Rate Gradient GP 3°, 5.2% 320 FT/NM		FT/ MIN		750	640	530	430			